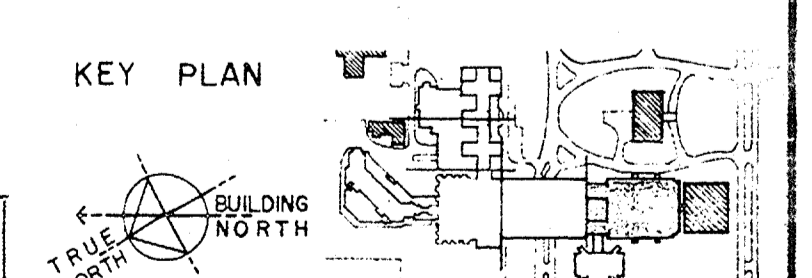
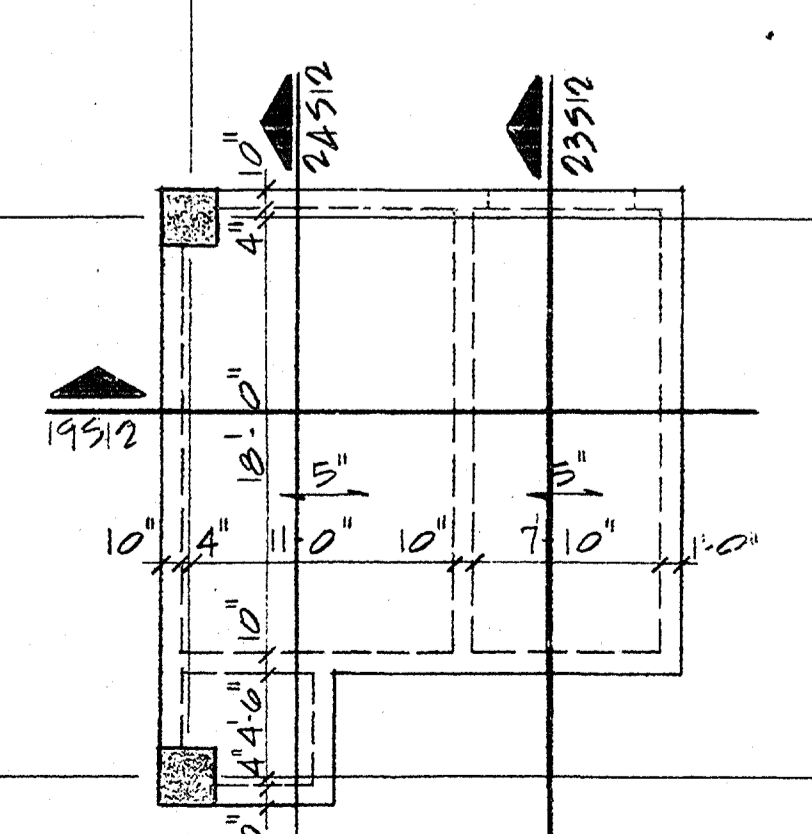


SEE ARCH. DWG'S FOR LOCATION OF CURBS, ECT.
LIVE LOAD=100 PSF UNLESS NOTED ON PLAN



ELEVATOR MACHINE PLATFORMS

**THE UNIVERSITY OF TEXAS
MEDICAL SCHOOL**
HOUSTON, TEXAS

BROOKS, BARR, GRAEBER AND WHITE
A. I. A. ARCHITECTS

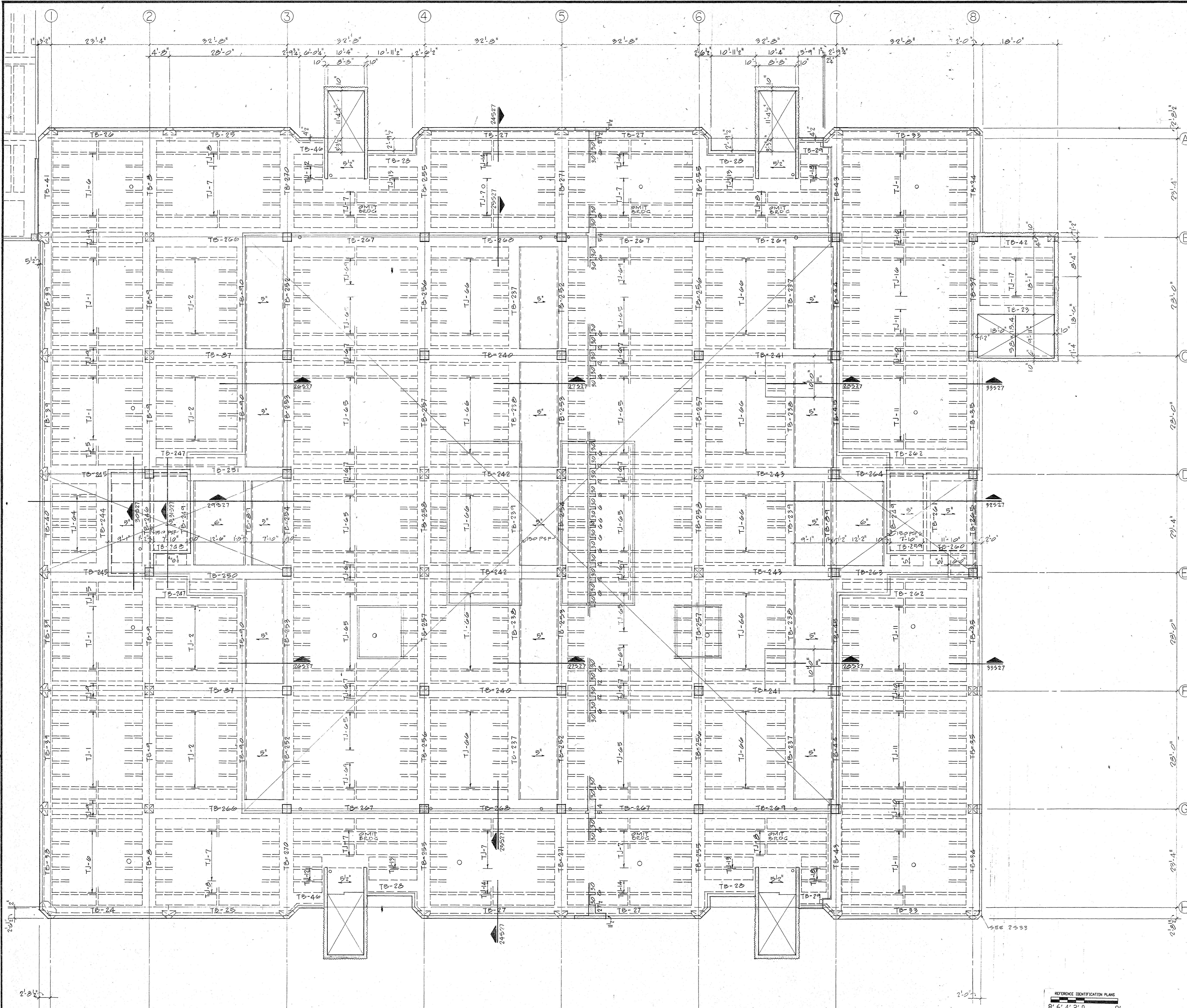
700 PERRY-BROOKS BLDG. AUSTIN, TEXAS

NO.	REVISION	DATE

JOB NUMBER: 4112
DRAWN BY: AGP
CHECKED BY: JAL
DATE: JUNE 9, 1975

SHEET NO. **7** OF 5

**PENTHOUSE FLOOR
TITLE: PLAN - PART II**



GENERAL NOTES
 1. FIN. PENTHOUSE F.L.E. ELEV. 154.30
 2. LIVE LOAD 100 P.S.F. EXCEPT AS NOTED ON PLAN
 3. SEE MECH FOR CHASE OPENINGS

REFERENCE IDENTIFICATION PLANS
 8' 6" 4' 2" 0
 1/8" = 1' 0"

KEY PLAN

**THE UNIVERSITY OF TEXAS
 MEDICAL SCHOOL**
 HOUSTON TEXAS
 BROOKS, BARR, GRAEBER AND WHITE
 A. I. A. ARCHITECTS

NO.	REVISION	DATE	SHEET NO.

JOB NUMBER 912
 DRAWN BY ACP
 CHECKED BY CKH
 DATE 5 JUNE 1973

ROOF FRAMING PLAN - PART I
 SCALE 1/8" = 1'-0"

SHEET ROOF FRAMING PLAN
 PART I

