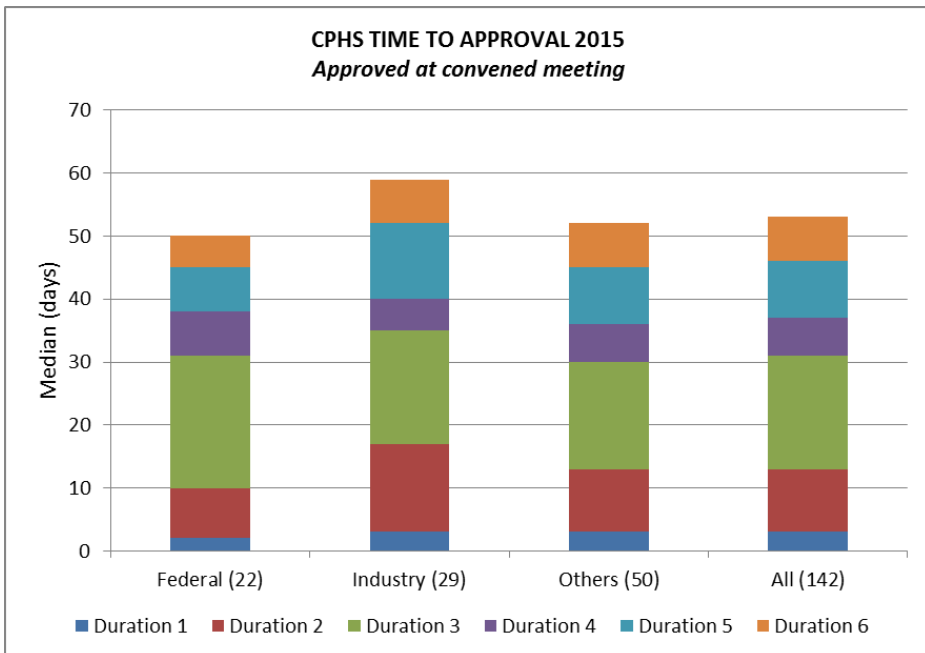
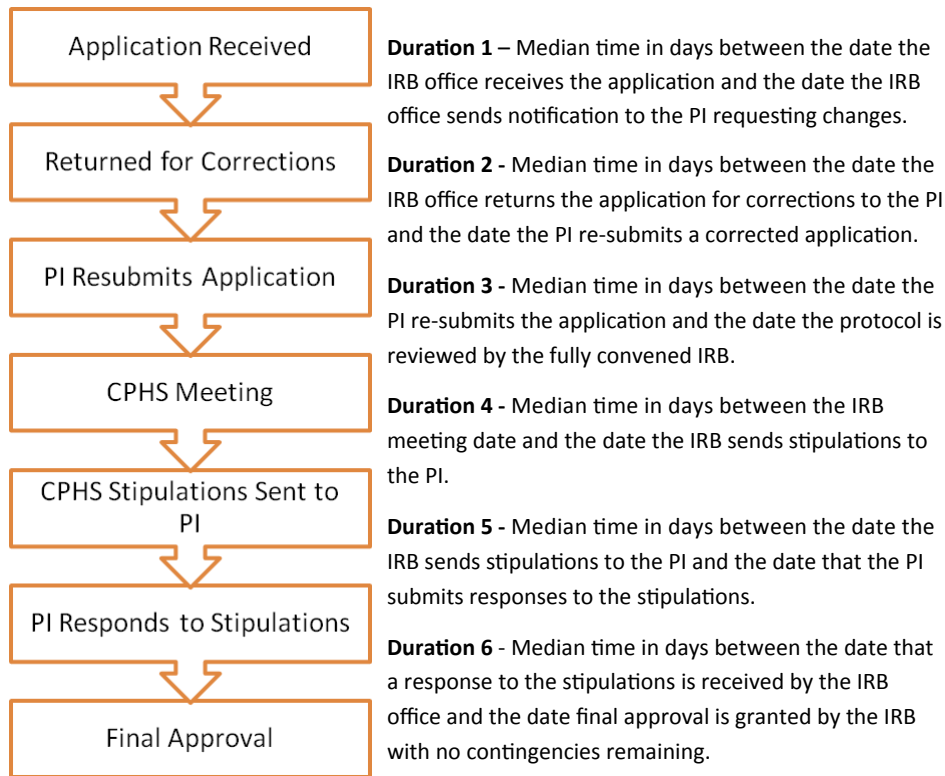


TIME TO APPROVAL—FULL BOARD ONLY



REPORT TO FACULTY AND STAFF ON CPHS ACTIVITIES

-2015-

from

Anne Dougherty, MD

Vice President, Human Research Protection Program

Panel 1

Chair: Rebecca Lunstroth, JD
 Vice Chair: Kathleen Kennedy, MD
 Coordinator: Vacant

Panel 2

Chair: Ben Barnett, MD
 Vice Chair: George Delclos, PhD
 Sr. Coordinator: Audrey Ester, PhD

Panel 3

Chair: Rita Swinford, MD
 Vice Chair: Cathy Thompson, RN
 Coordinator: Vanessa Fuller, BS

Panel 4

Chair: Max Buja, MD
 Vice Chair: Ralph Frankowski, PhD
 Coordinator: Cristal Casanova, BS

IRB Support Staff

Director: Cynthia Edmonds, MLA
 Sr. IRB Coordinator: Sylvia Romo, BSBM
 Sr. Systems Analyst: Barbara Legate, BS
 IRB Assistant: Vacant
 Email: cphs@uth.tmc.edu
 Website: www.uth.edu/cphs

Research Compliance

Director: Sujatha Sridhar, MBBS, MCE
 Sr. Compliance Specialist: Catrina VanAllen, MBA
 Sr. Compliance Specialist: Elizabeth Gendel, PhD
 Graduate Assistant: Rosemary Tran, BS
 Email: clinicaltrials@uth.tmc.edu
 Website: www.uth.edu/ctrc

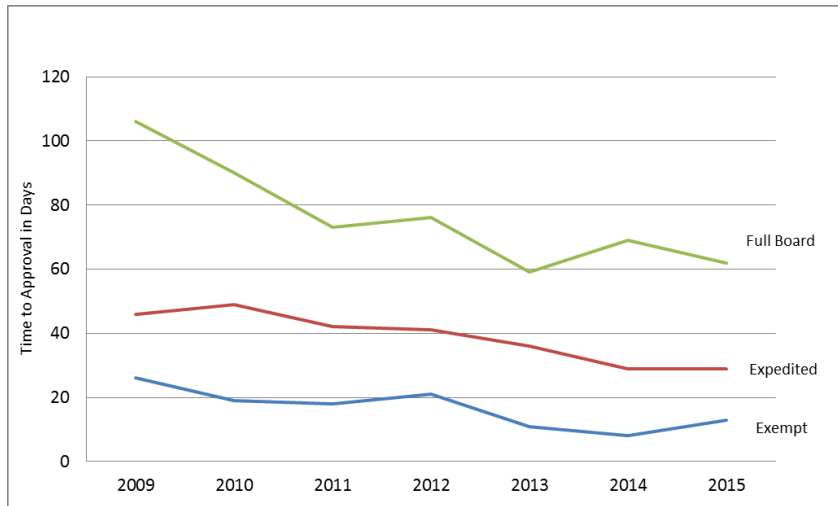
CPHS Office

6410 Fannin Street, Suite 1100, Houston, Texas 77030
 Phone: 713.500.7943



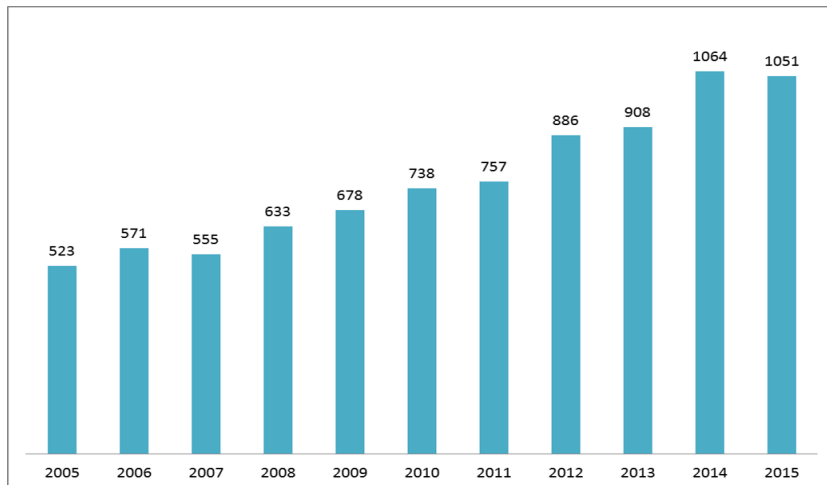
TIME TO APPROVAL

The median turnaround time (which is the time between initial submission of the protocol and final approval) has steadily decreased. This includes the time that the protocol was on the researcher's queue to address pre-screening concerns, such as missing documents and post review stipulations.



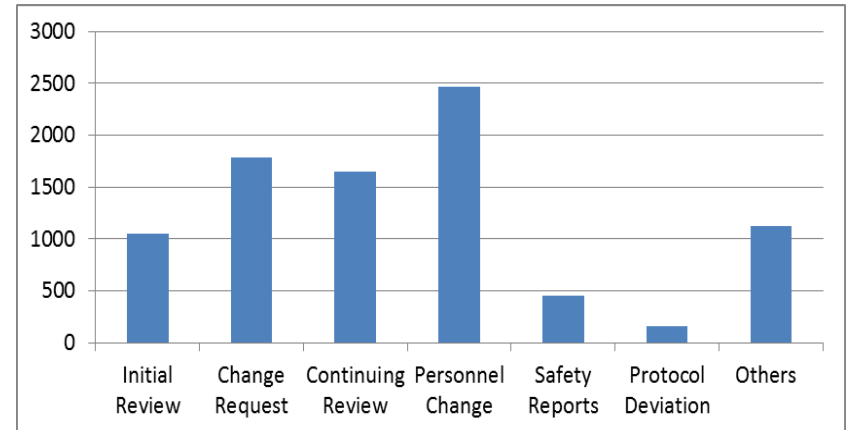
NEW APPLICATIONS TO CPHS

The number of initial applications to CPHS has been steadily increasing since UT Houston began using iRIS. From just over 500 new applications in 2005, CPHS received 1,051 initial applications in 2015 for review and approval.



SUBMISSIONS

In 2015, CPHS reviewed and processed 11,527 submissions. A large proportion of these submissions were personnel change requests. The safety reports include reportable adverse events as well as data safety monitoring board reports. The category 'Other' includes study miscellaneous reports and other general reports.



CPHS FACULTY SURVEY

Responses to the CPHS Faculty Survey, including free text responses, are shared with the CPHS Executive Committee each quarter. The responses are helpful in continuous quality improvement of CPHS processes.

