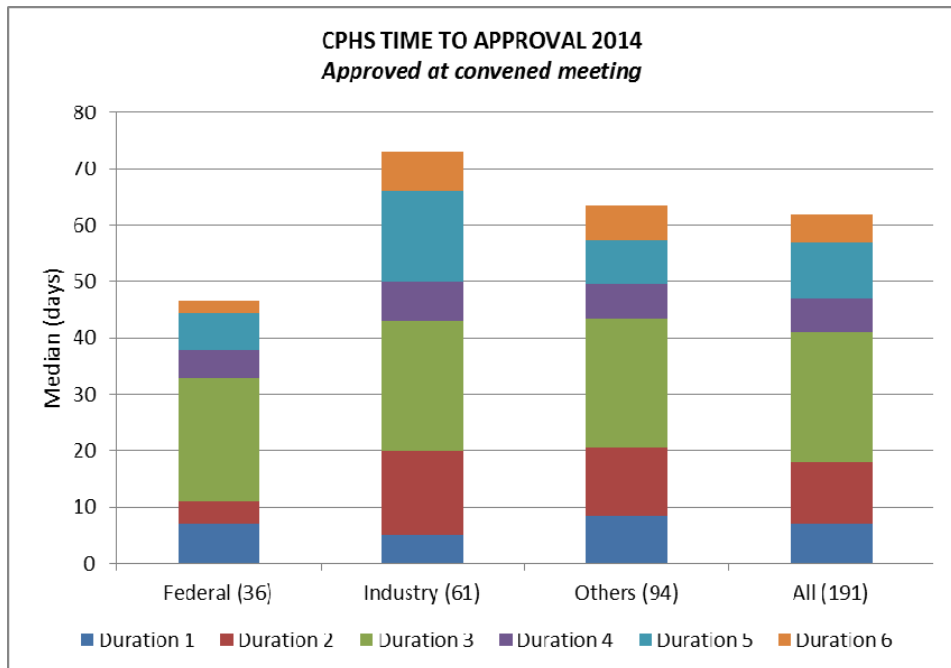
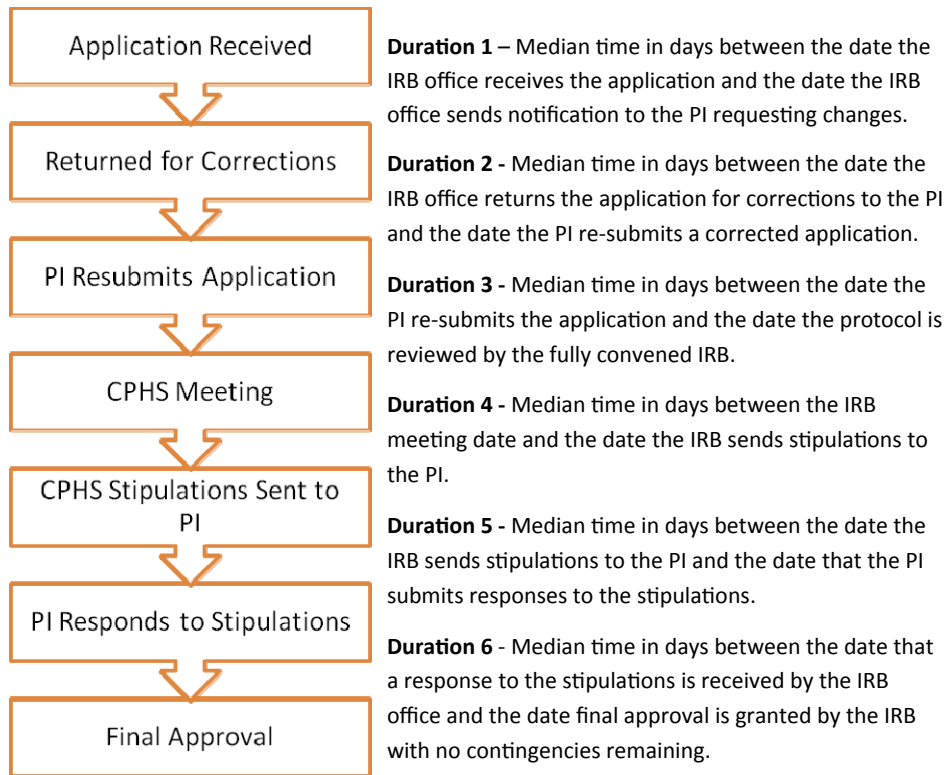


TIME TO APPROVAL—FULL BOARD ONLY



REPORT TO FACULTY AND STAFF ON CPHS ACTIVITIES

- 2014-

from

Anne Dougherty, MD

Vice President, Human Research Protection Program

Panel 1

Chair: Rebecca Lunstroth, JD
 Vice Chair: Kathleen Kennedy, MD
 Coordinator: Von'Diza Gaines, BBA

Panel 2

Chair: John Ribble, MD
 Vice Chair: George Delclos, PhD
 Coordinator: Audrey Ester, PhD

Panel 3

Chair: Rita Swinford, MD
 Vice Chair: Cathy Thompson, RN
 Coordinator: Deborah Dowlin, MA

Panel 4

Chair: Max Buja, MD
 Vice Chair: Ralph Frankowski, PhD
 Coordinator: Cristal Casanova, BS

IRB Support Staff

Director: Cynthia Edmonds, MLA
 Sr. IRB Coordinator: Sylvia Romo, BSBM
 Sr. Systems Analyst: Barbara Legate, BS
 IRB Assistant: Paula Alexander
 Graduate Assistant: Christian Vilca, BS
 Email: cphs@uth.tmc.edu
 Website: www.uth.edu/cphs

Research Compliance

Director: Sujatha Sridhar, MBBS, MCE
 Sr. Regulatory Specialist: Catrina VanAllen, BS
 Regulatory Specialist: Elizabeth Gendel, PhD
 Graduate Assistant: Ngozi Okafor, MPH
 Email: clinicaltrials@uth.tmc.edu
 Website: www.uth.edu/ctrc

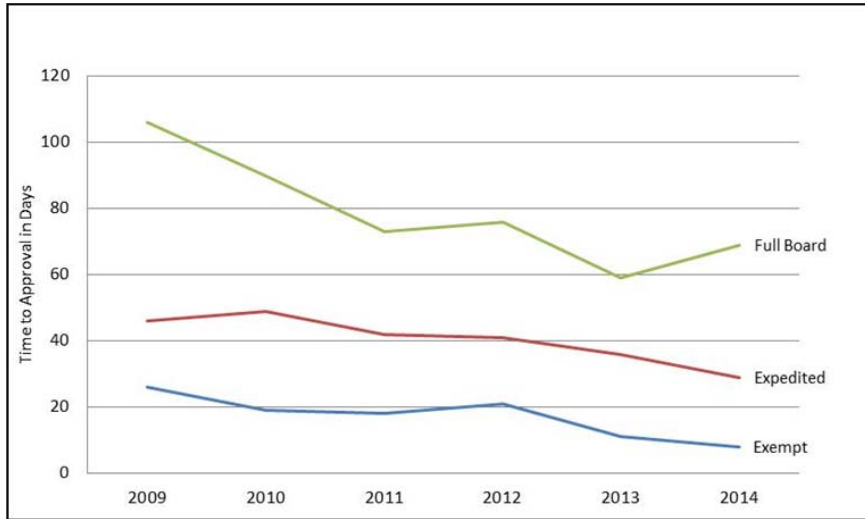
CPHS Office

6410 Fannin Street, Suite 1100, Houston, Texas 77030
 Phone: 713.500.7943



TIME TO APPROVAL

The median turnaround time (which is the time between initial submission of the protocol and final approval) has steadily decreased. This includes the time that the protocol was on the researcher’s queue to address pre-screening concerns, such as missing documents and post review stipulations.



REVIEW CATEGORY

In the spirit of reducing regulatory burdens, CPHS staff try to assign the most suitable level of review based on the research risks. Over 70% of the protocols approved in 2014 were exempt or reviewed by expedited procedure.

Category	Count
Exempt	329
Expedited	341
Full Board	191
Reciprocity	52
Total	913

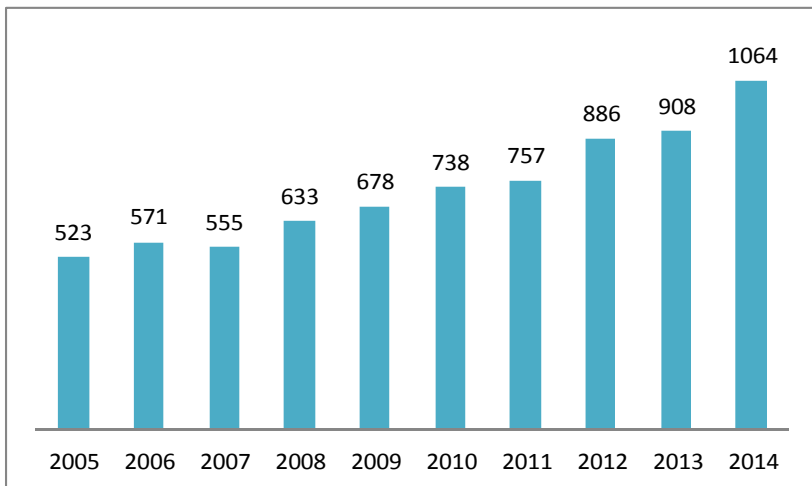
SUBMISSIONS

In 2014, CPHS reviewed and processed 8,415 submissions.



NEW APPLICATIONS TO CPHS

The number of initial applications to CPHS has been steadily increasing since UT Houston began using iRIS. From just over 500 new applications in 2005, CPHS received 1,064 initial applications in 2014 for review and approval.



CPHS FACULTY SURVEY

Responses to the CPHS Faculty Survey, including free text responses, are shared with the CPHS Executive Committee each quarter. The responses are helpful in continuous quality improvement of CPHS processes.

