

Fact Book **2017**



Editor's note

The *Fact Book* is truly a university-wide effort. We are personally indebted to the many departments and individuals who lend their time, expertise, and support year after year. Without them, this publication would cease to exist. We therefore wish to publicly acknowledge the efforts of all involved and especially thank the following:

Michael R. Blackburn, PhD
Executive Vice President & Chief Academic Officer

The Office of Academic Affairs & Student Support Services

Eric Solberg
Deanne Hernandez
Kathy Rodgers
Corrin Ordner
Anu Sankhavaram
Heidemarie Porter
Shannon Banner

Also

Araceli Alvarez	Student Financial Services
Scott Barnett	Office of Budget & Financial Reporting
April Bass	McGovern Medical School
David Bates	School of Nursing
Leslie Beckman	Office of Postdoctoral Affairs
Ryan Bien	School of Biomedical Informatics
Darla Brown	McGovern Medical School
Patricia Bruesch	Graduate School of Biomedical Sciences
Claire Brunson	McGovern Medical School
Lisa Christison	Office of Development
Christine Flynn	Office of Technology Management
James Fore	Student Financial Services
Heidemarie Hellriegel	Capital Assets Management
Duane Heuer	Facilities Operations
Robert Jenkins	Office of the Registrar
Art Jeske, DMD, PhD	School of Dentistry
Sue Langgard	Office of the Bursar
Lynnette Lewis	School of Dentistry
Dana McDowelle, PhD	McGovern Medical School
Vanessa McKeown	Finance
Shannon Neufeld	School of Public Health
Amaris Ogu	Sponsored Projects Administration
Phil Pierpont, DDS	School of Dentistry
Lois Pierson	UT Harris County Psychiatric Center
Brenda Powers	Office of the Registrar
Diana Pressley, EdD	School of Nursing
Kimberly Ruona, DDS	School of Dentistry
Sylvia Salas	School of Public Health
Karen Spillar, JD	Office of the President
Ty Sponberg	Office of Development
Bret Wandel	Facilities Operations
Tera Wright	Office of the Registrar

Deanne Hernandez
Director, Institutional Research & Accreditation
Editor, *Fact Book 2017*

Shannon Banner
Graduate Assistant
Co-editor, *Fact Book 2017*

Preface *Fact Book 2017*

The Office of Academic Affairs & Student Support Services is pleased to introduce the twenty-seventh edition of The University of Texas Health Science Center at Houston's (UTHealth) annual Fact Book.

Data, where appropriate, align with:

- The university's Annual Financial Report;
- Certified Texas Higher Education Coordinating Board reports (enrollment, degrees conferred, faculty, medical residents);
- Performance Measures reported to the Legislative Budget Board (uncompensated charity care, medical outpatient clinical activity – visits); and/or
- Other State and UT System required reports (financial aid, research expenditures, facilities, philanthropy)

Most tables portray FY 2016 data, which covers the period of September 1, 2015 – August 31, 2016. Enrollment and employee figures are as of October 2016 and organization charts are current as of press time. Table titles will indicate the date(s) covered.

UTHealth Mission Statement

As a comprehensive health science university, the mission of The University of Texas Health Science Center at Houston is to educate health science professionals, discover and translate advances in the biomedical and social sciences, and model the best practices in clinical care and public health.

We pursue this mission in order to advance the quality of human life by enhancing the diagnosis, treatment, and prevention of disease and injury, as well as promoting individual health and community well-being.

UTHealth Vision Statement

Excellence above all in the quest to be an acknowledged leader in the collaboration to treat, cure and prevent the most common diseases of our time through education, research and clinical practice.

Please direct questions or comments regarding *Fact Book 2017* to:

The Office of Academic Affairs & Student Support Services
7000 Fannin, Suite 1565
Houston, Texas 77030

UCT 1565 (for intra-institutional mail)

713.500.3192 telephone

713.500.3069 facsimile

Eric Solberg
Vice President

Deanne Hernandez
Director, Institutional Research & Accreditation
Fact Book Editor

The University of Texas Health Science Center at Houston is accredited by the Southern Association of Colleges and Schools Commission on Colleges to award certificate, undergraduate, masters, doctoral, and professional degrees. Contact the Commission on Colleges at 1866 Southern Lane, Decatur, Georgia 30033-4097 or call 404.679.4500 for questions about the accreditation of The University of Texas Health Science Center at Houston.

The University of Texas Health Science Center at Houston is an equal opportunity employer. In accordance with both state and federal laws and regulations, UTHealth will provide equal opportunity in all employment-related activities without regard to race, color, religion, sex, sexual orientation, national origin, age, disability, or veteran status.

© January 2017

Table of Contents *Fact Book 2017*

Preface	3
The University of Texas Board of Regents	6
UTHealth Executive Leadership & School Profiles	7
Education	21
Summary of Academic Programs & Accreditation	23
Applicant Profile	24
Headcount Enrollment by Full-time/Part-time Status	25
Headcount Enrollment by Race/Ethnicity	26
Headcount Enrollment by Race/Ethnicity (Domestic Students only)	28
Headcount Enrollment by Level	30
Headcount Enrollment by Level, Race/Ethnicity & Gender	31
Headcount Enrollment by Academic Program	32
Headcount Enrollment by Residency	34
Full-time Equivalent (FTE) Student Enrollment	35
GSBS Students by Institutional Affiliation	36
Postdoctoral Research Fellows	36
Licensure Examination Results	37
Degrees Conferred by School	38
Degrees Conferred by Academic Program	40
Degrees Conferred by Level & Race/Ethnicity	42
Profile of Medical Residents in ACGME Accredited Programs	43
McGovern Medical School Graduating Class Specialty Choices	44
School of Dentistry Residents & Postgraduate Students	45
Medical (MCAT) & Dental (DAT) Applicant Scores	46
Tuition & Fees	47
Student Financial Aid Profile	50
Total Student Financial Aid Awards by School	51
Total Student Financial Aid Awards by Major Program	52
Average Student Financial Aid Awards by School	53
Average Student Debt on Graduation	54
Total Graduates by School	55
Research	57
Research Expenditures by Unit	59
UT Health-Related Institutions Research Expenditures by Source	60
Trends in UT Health-Related Institutions Research Expenditures	60
Research Expenditures by Sponsoring Agency	61
Grant Proposals by Unit & Type	62
Contract & Grant Awards by Unit & Type	63
Contract & Grant Awards by Source	64
Intellectual Property Activity	65
NIH Awards by Unit	66
Federal Awards by Agency	67
Principal Investigators by Unit	67
Sponsored Project Activity Report	68

Patient Care **69**

McGovern Medical School Outpatient Clinical Activity - Visits	71
Un-sponsored Medical & Dental Charity Care Provided by Faculty	71
School of Dentistry Clinical Activity: Patient Visits	72
School of Dentistry Clinical Activity: Patient Treatments	73
UT Health Services Patient Visits	74
UT Harris County Psychiatric Center Clinical Activity	74
Medical Practice Plan Summary of Operations	75

Employees **77**

Faculty by Full-time/Part-time Status	79
Without Salary Faculty Appointments	79
Faculty by Race/Ethnicity & Gender	80
Faculty by Tenure Status & Gender	81
Classified Staff by Race/Ethnicity & Gender	82
Administrative & Professional (A&P) Staff by Race/Ethnicity & Gender	83
Employees by Race/Ethnicity & Gender	84
Employees by Employment Category	85
Budgeted Full-time Equivalent (FTE) Employees by Source of Funds	86
GSBS Faculty Membership by Institutional Affiliation	88

Finance & Philanthropy **89**

Total Funds Operating Budget by Unit & Revenue Source	91
Total Funds Operating Budget by Revenue Source	92
Total Funds Operating Budget by NACUBO Function	93
State Funds Operating Budget	94
Endowment Trends	95
Voluntary Support	95
Faculty Endowment Status	96
Endowed Scholarships	96

Physical Facilities **97**

Capital Equipment Expenditures by Asset Category	99
Facilities Operating Expenditures (Owned)	100
Purchased Utilities	100
Space Inventory by Function	101
Space Inventory by Program	102

The University of Texas Board of Regents

source: <http://utsystem.edu/board-of-regents/current-regents>

The Board of Regents, the governing body for The University of Texas System, is composed of nine members who are appointed by the Governor and confirmed by the Senate. Terms for Regents are scheduled for six years each and staggered so that three members' terms will usually expire on February 1 in odd-numbered years. In addition, the Governor appoints a Student Regent for a one-year term that expires on May 31.

Throughout the more than 100-year history of The U. T. System, the Board has been composed of dedicated and distinguished Texans who have been strong advocates of excellence in academic programs, scientific inquiry, and responsible public service.

Paul L. Foster, *Chairman*

R. Steven Hicks, *Vice Chairman*

Jeffrey D. Hildebrand, *Vice Chairman*

Ernest Aliseda

David J. Beck

Alex M. Cranberg

Paul L. Foster

Wallace L. Hall, Jr.

Brenda Pejovich

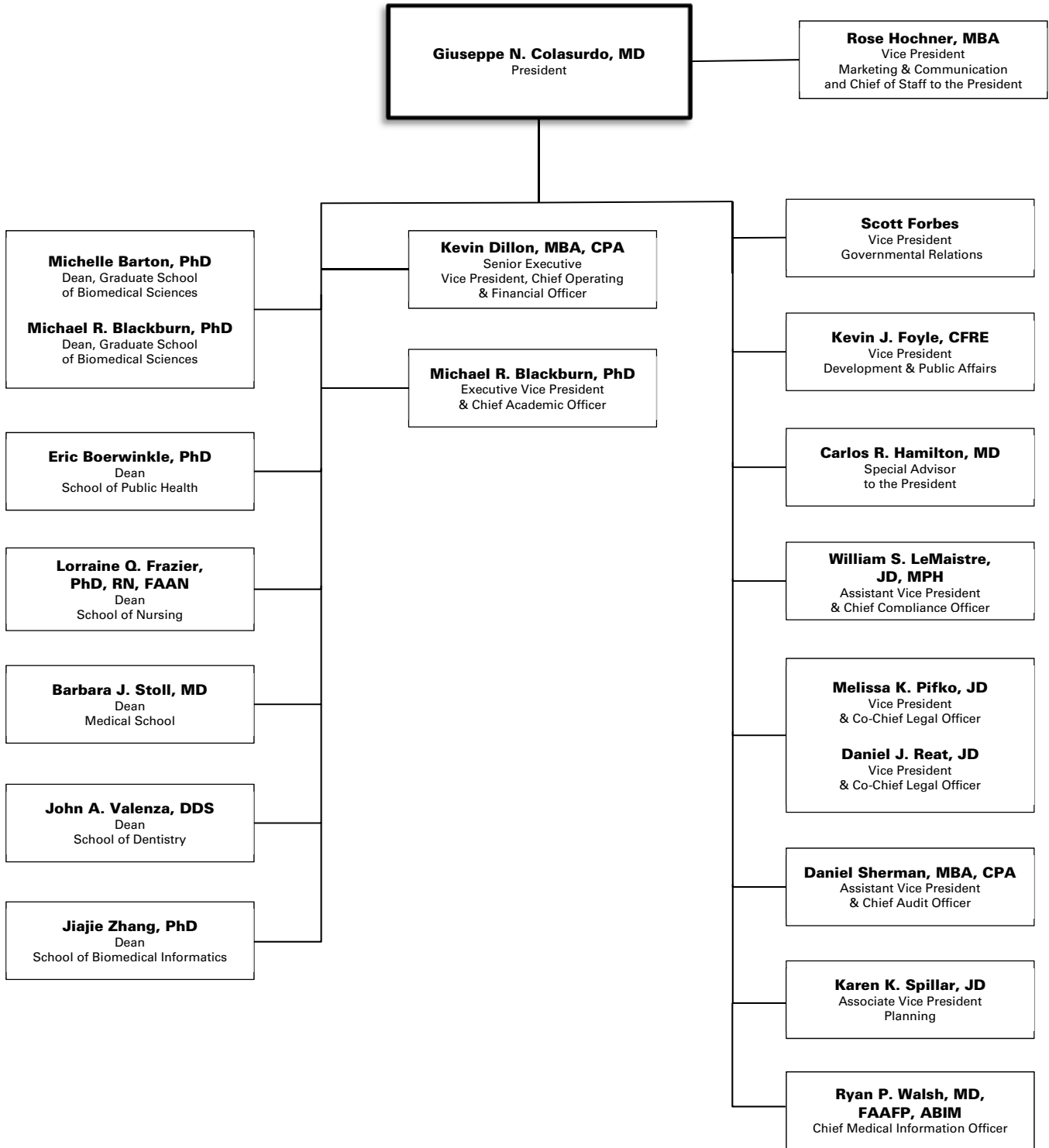
Sara Martinez Tucker

Varun Pokkamthanam Joseph, *Student Regent*

Francie A. Frederick, General Counsel to the Board of Regents

UTHealth Executive Leadership Organization Chart

source: [Karen Spillar](#), Office of the President



School of Biomedical Informatics *Profile*

source: [Ryan Bien](#), School of Biomedical Informatics

History and Purpose

The School of Biomedical Informatics (SBMI) is the first and only national program at a school level devoted exclusively to graduate education in biomedical informatics. Informatics first became the focus of SBMI in 1997. The school's name was changed to the School of Health Information Sciences in 2001, and it was rebranded in 2010 to more accurately reflect its new mission. SBMI is now recognized locally, nationally, and internationally for its innovative, interdisciplinary approaches to research, education, and applications in informatics. The mission of SBMI is to educate future scientists and professionals in biomedical informatics and health information technology, conduct informatics research to improve health care and advance biomedical discovery and develop advanced informatics tools to solve problems in health care. Biomedical research and healthcare solutions are advanced by bringing together the computer, engineering, mathematical, cognitive, biomedical and clinical sciences. SBMI's interdisciplinary programs mean that breakthroughs in the lab will be translated more efficiently into quality care; researchers will have better tools to advance treatments and cures, physicians will have better diagnostic tools and ways to obtain necessary information, and patients will have better access to personalized care.

Instructional Programs

Biomedical Informatics is the interdisciplinary scientific field that studies and pursues the effective uses of biomedical data, information, and knowledge for scientific inquiry, problem solving and decision making, motivated by efforts to improve human health ([amia.org](#)). SBMI offers interdisciplinary graduate-level courses in health and biomedical informatics for students enrolled in UTHHealth schools and for health professionals, IT professionals, and scientists in the Texas Medical Center (TMC), across the nation, and throughout the world. The curriculum stresses the development of interdisciplinary teams to evaluate and address the complex informatics issues that confront healthcare and biomedical research in this century. Students enter SBMI's Biomedical Informatics programs with a strong scientific foundation derived from their previous undergraduate or graduate studies, and will study how to communicate knowledge across traditional, professional, and organizational barriers. As they progress, students will acquire knowledge needed to organize, store, display, communicate, and evaluate that knowledge across a variety of systems: electronic, social, and political.

Currently, SBMI offers two degree programs: a master of science in Biomedical Informatics (MS) and a doctor of philosophy in Biomedical Informatics (PhD). A MS student may choose from two tracks: a traditional research track or an applied professional track. The school also offers a dual-degree program in Public Health Informatics with the School of Public Health, leading to an MPH/MS or an MPH/PhD. Three five-course certificate programs in Biomedical Informatics, Applied Biomedical Informatics, and Public Health Informatics are also available. The master's and certificate programs can be completed online.

Students come to SBMI with a variety of skills and diverse backgrounds. Each student, along with a faculty advising committee, determines his/her program of study from a matrix of courses and one or more focus areas, including clinical & cognitive informatics, translational bioinformatics, applied informatics, and public health informatics. SBMI faculty and students, working with scientists and practitioners across UTHHealth, the TMC, and beyond have created a real world laboratory for honing knowledge and refining research skills in the growing field of biomedical informatics.

First Focus Area: Clinical & Cognitive Informatics

Cognitive science in medicine
Artificial intelligence, knowledge modeling, and decision support
Information retrieval, data mining, machine learning
National Language Processing (NLP) and text processing
Ontology, terminology, and data integration
Practice guidelines and standards
Electronic medical records
Mobile Health, Connected Health, and Telemedicine
User interface design and human-computer interaction in health care
Information display and visualization
Patient safety

Second Focus Area: Translational Bioinformatics

Clinical genomics and systems biology
Bioinformatics and genomics
Precision medicine
Computational biostatistics
Computational systems biology

Third Focus Area: Applied Informatics

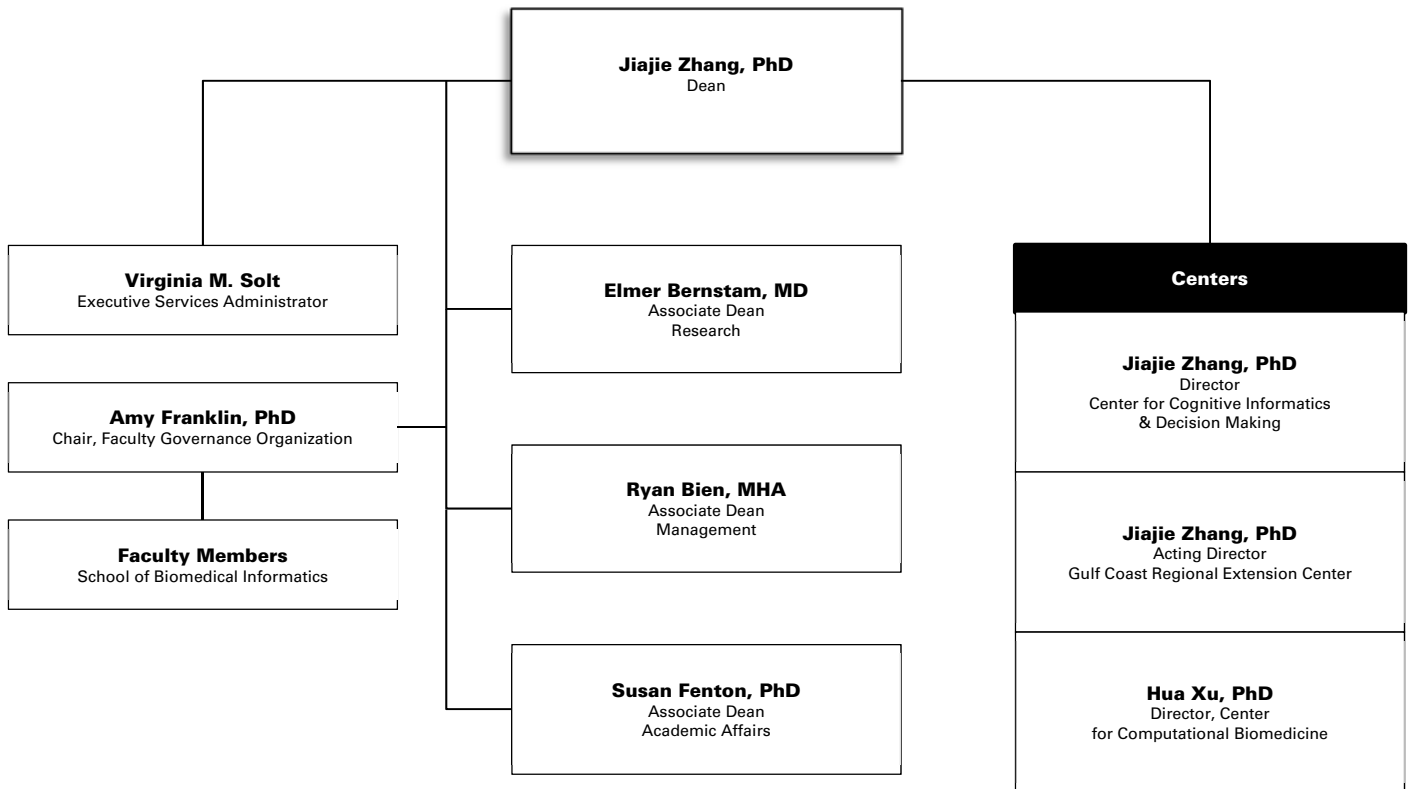
Data analytics for quality, safety, and efficiency
Workflow optimization
Data warehousing and Data quality
Clinical decision support for clinical operations

Fourth Focus Area: Public Health Informatics

Population health
Public health informatics & biosurveillance
Healthcare management informatics
Big data analytics of claims data
Social media

School of Biomedical Informatics *Organization Chart*

source: [Ryan Bien](#), School of Biomedical Informatics



School of Dentistry Profile

source: [Lynnette Lewis, MBA](#), School of Dentistry

History and Purpose

For more than 100 years, The University of Texas School of Dentistry (UTSD) at Houston has set the standard for oral health by educating outstanding dentists, specialists and dental hygienists while conducting research and caring for the people of Texas. Founded in 1905 as the privately owned Texas Dental College, UTSD was the first dental school in the state and became The University of Texas School of Dentistry in 1943. In 1945, UT Regents authorized creation of the state's first academic dental hygiene program at UTSD. The school was renamed "UT Dental Branch" in 1955 but reverted to "School of Dentistry" on June 1, 2011. Since 1972, the School of Dentistry has been part of The University of Texas Health Science Center at Houston (UTHealth).

Fulfilling the Mission: Education

UTSD offers 10 accredited programs: DDS, dental hygiene, two primary care general residency programs, and specialty programs in endodontics, oral and maxillofacial surgery (OMS), orthodontics, pediatric dentistry, periodontics, and prosthodontics. The OMS program offers two tracks: a certificate-only program, and a program leading to both a certificate and an MD degree from UTHealth's McGovern Medical School. UTSD is a leading provider of continuing dental education. UTHealth School of Public Health and UTSD will soon launch dual-degree programs offering concurrent BSDH/MPH and DDS/MPH options for students.

Fulfilling the Mission: Research

Researchers at the School of Dentistry work in diverse areas to develop new knowledge applicable to the prevention, diagnosis and treatment of oral and systemic diseases. Current areas of investigation are:

- Genetic studies of orofacial clefts and tooth agenesis
- Bioinformatics for improving quality of patient care
- Oral biomaterials and digital restorative dentistry
- Regenerating craniofacial structures through tissue engineering
- Mechanisms of mucosal immunity and autoimmunity
- Molecular imaging of oral and other types of cancer
- Advanced imaging of craniofacial structures.

Students participate in research projects, and UTSD's research programs support the master's level research of dental students receiving advanced education in endodontics, orthodontics, pediatric dentistry, periodontics, and prosthodontics. As a founding member of the Consortium for Oral Health Research and Informatics (COHRI), the School of Dentistry currently hosts the Big Mouth Dental Data Repository.

Fulfilling the Mission: Patient Care & Community Service

UTSD's patient care programs are broad and diverse. The school is widely known for its predoctoral and postgraduate clinics, where students and residents provide care under faculty supervision. The school also offers a multi-disciplinary faculty practice (UT Dentists) that includes a group practice located inside the school, an oral pathology (biopsy) service, oral and maxillofacial surgery services in Scurlock Tower, pediatric dentistry in the Houston Medical Center, and oral and maxillofacial imaging services through UT Dentists.

Students gain clinical experience at the school, in community clinical rotations, and on the school's two mobile dental vans. Using the latest dental technologies such as digital imaging, digital impressions, CAD/CAM, electronic patient records and laser dentistry, UTSD students actively participate in caring for a variety of patient populations. The School of Dentistry is a primary source of quality oral health care for low-income families, the traditionally underserved, and for patients with special needs and/or medical co-morbidities. UTSD has clinical affiliations with five hospitals and dozens of schools, community agencies and long-term care centers.

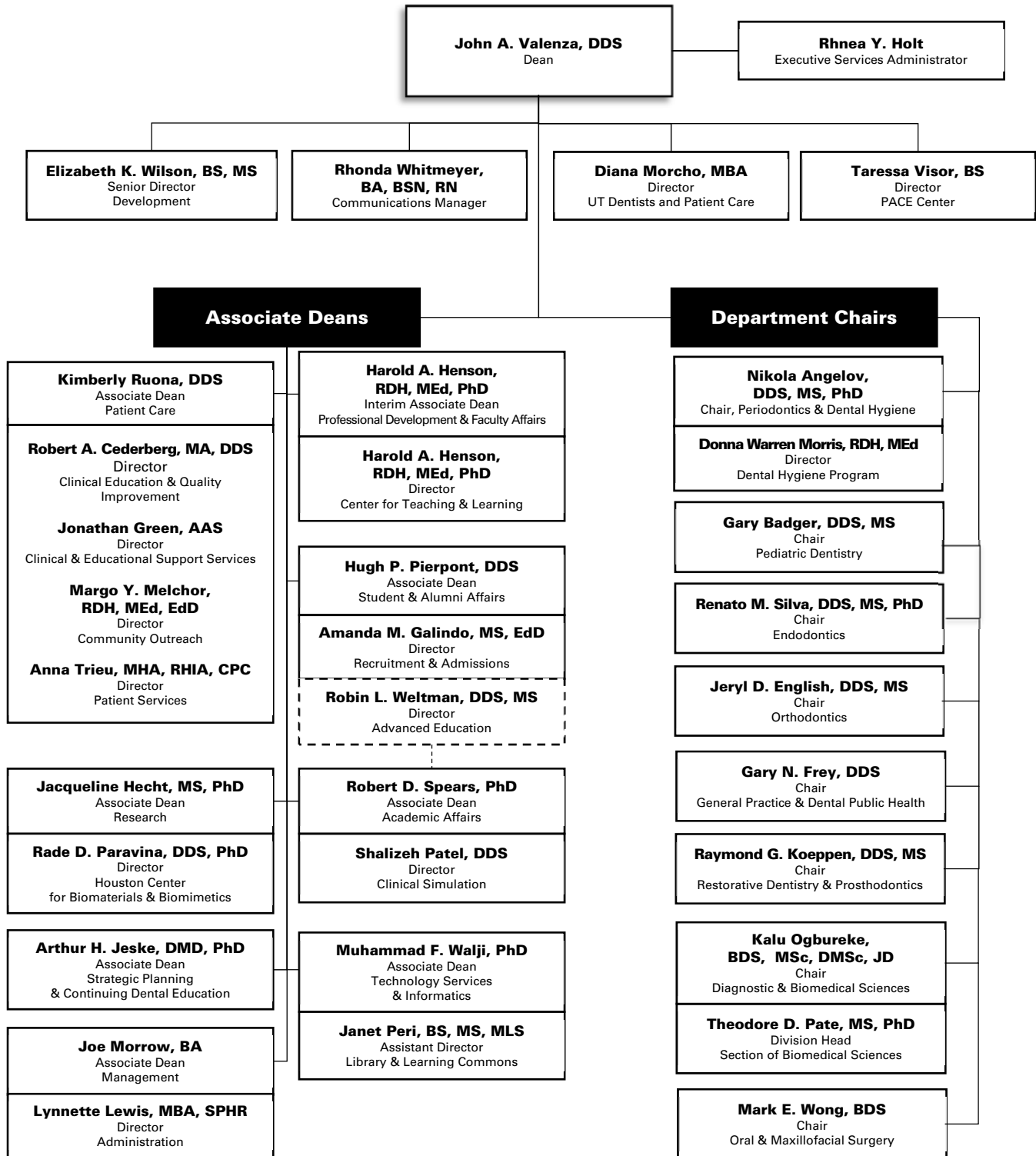
Facilities

Since 2012 the School of Dentistry has occupied a new, 300,000 square-foot building at 7500 Cambridge St. in UT Research Park. The Denton A. Cooley, MD, and Ralph C. Cooley, DDS, University Life Center (a conference facility), and the UT Behavioral and Biomedical Sciences Building (a research facility) are attached to the dental school. UTSD also has off-site clinics: University Dental Center (postgraduate general dentistry) inside UT Professional Building, 6410 Fannin St., Suite 310; and the UTHealth Pediatric Dentistry Postgraduate Clinic inside the Houston Medical Center Building, 6655 Travis St., Suite 460. UTSD faculty and students also provide dental services inside Texas Children's Health Plan facilities at 700 N. Sam Houston Parkway West in the Greenspoint area and at 9700 Bissonnet in Southwest Houston.

More information about UTHealth School of Dentistry at Houston is available at <https://dentistry.uth.edu>.

School of Dentistry Organization Chart

source: [Lynnette Lewis, MBA](#), School of Dentistry



MD Anderson UTHealth Graduate School of Biomedical Sciences *Profile*

source: [Patricia Bruesch, MPA](#), MD Anderson UTHealth Graduate School of Biomedical Sciences

History and Future

Michelle Barton, PhD, and Michael Blackburn, PhD, serve jointly as deans of The University of Texas MD Anderson Cancer Center UTHealth Graduate School of Biomedical Sciences, which educates future biomedical scientists at two institutions: The University of Texas Health Science Center at Houston (UTHealth) and The University of Texas MD Anderson Cancer Center (MD Anderson). In addition to building synergy between these two institutions, Barton and Blackburn's vision is focused on developing leaders of the next generation who will define new frontiers of science and whose research will find cures to the most challenging diseases.

The MD Anderson UTHealth Graduate School is a unique interdisciplinary collaborative model of graduate education with faculty, classrooms, and laboratories drawn from UTHealth, MD Anderson and the Texas A&M Institute for Biosciences & Technology (IBT). Authorized by the 58th Legislature in 1963 MD Anderson UTHealth Graduate School has been educating PhD and MS biomedical scientists and combined MD/PhD graduates for over 50 years with a mission to educate research scientists and scientist-educators, generate new knowledge in the biomedical sciences that is translated into improved health and increase public understanding of science. As a public institution its charge is to train the scientists of tomorrow to meet the workforce needs of the state and nation.

Instructional Programs

The School offers PhD and MS degrees, as well as a joint MD/PhD physician-scientist program. In addition, two specialized Masters programs are offered: one in Medical Physics and one in Genetic Counseling, the only such certified program in Texas. With over 400 students who are working toward degrees, approximately 80 students graduate annually. The average time at MD Anderson UTHealth Graduate School to complete a PhD degree is 5 ½ years, which is less time than the national average. The student body includes approximately 33 percent of its population from Texas, 33 percent from the United States (not including Texas), and 34 percent who are international students; 56 percent are women and 44 percent men. Annually MD Anderson UTHealth Graduate School provides in excess of \$1 million in scholarship, fellowship and stipend support for scholastic excellence and research achievement.

The MD Anderson UTHealth Graduate School faculty is comprised of nearly 600 full-time members plus additional academicians. This large and distinguished group encompasses recipients of numerous awards and membership in several professional organizations such as: the Lasker Foundation Award (America's Nobel Prize); the Pezcoller Foundation-American Association for Cancer Research (AACR) International Award for Cancer Research; The Minnie Stevens Piper Foundation Professorship; the National Academy of Science and the American Association for the Advancement of Science.

Known for its educational philosophy of excellence, MD Anderson UTHealth Graduate School offers students the opportunity to join an established program that suits their professional goals. Two dramatic changes were added to our graduate students' curriculum activities to build a strong research foundation for their success. These changes include a Core Program in the basic biomedical sciences and skills for a consistent, up-to-date background for all incoming students; and, for all second year students, a formal presentation of lab coats serves to recognize the importance of selecting their mentors and programs of study.

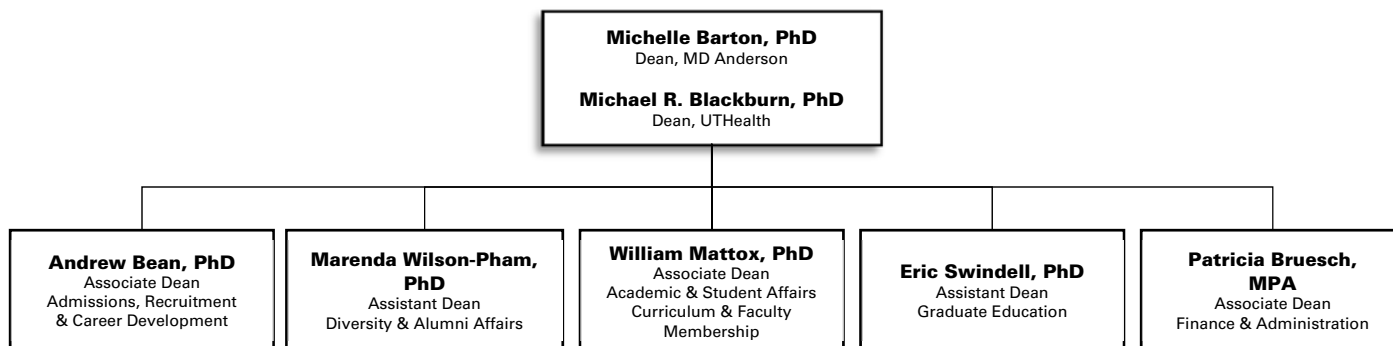
Facilities

The Graduate School, including the Dean's Office and Administrative personnel, is located in the George and Cynthia Mitchell Basic Sciences Research Building where it is housed in the June & Virgil Waggoner Academic Hall. The facilities are geared toward a dynamic student population encompassing state-of-the art classrooms, computer lab, auditorium, and telecom capabilities to beam classes and lectures around the globe.

The research facilities and related resources available to MD Anderson UTHealth Graduate School students are unmatched anywhere in the world. The collaborative nature of the graduate school, with world-class faculty from UTHealth, MD Anderson Cancer Center and Texas A&M IBT, expands throughout the Texas Medical Center – the largest medical center in the world including 69 academic institutions and hospitals. The graduate school has developed academic arrangements (including shared research and classroom facilities) with other institutions, both individually and through the Gulf Coast Consortium (GCC) which includes the region's most prominent academic institutions – MD Anderson, UTHealth, University of Texas Medical Branch, Rice University, Baylor College of Medicine and the University of Houston.

MD Anderson UTHealth Graduate School of Biomedical Sciences *Organization Chart*

source: [Patricia Bruesch, MPA](#), Graduate School of Biomedical Sciences



McGovern Medical School Profile

source: [Claire Brunson](#), McGovern Medical School

History and Purpose

On June 13, 1969, The University of Texas Medical School at Houston (McGovern Medical School) was created by an act of the Legislature and an appropriation for its initial cost was made to be effective September 1, 1969. McGovern Medical School's mission is to provide the highest quality education and training of future physicians for the state of Texas, in harmony with the state's diverse population; to conduct the highest caliber of research in the biomedical and health sciences; and to provide exemplary clinical services.

Instructional Programs/Dual Degree Programs

Doctor of Medicine – Currently, the McGovern Medical School program leading to a medical doctor degree includes approximately 18 months of pre-clerkship course work. Basic and clinical sciences are presented in a systems-based modular format preceded by a Foundations block focusing on cellular phenomena. A parallel course addresses the development of student clinical skills through patient contact and simulation exercises. Emphasis is placed on teaching methodologies that emphasize active participation and development of lifelong learning skills, such as problem-based and team-based learning. The clerkship phase includes required rotations in all major medical specialties. Intersessions provide the opportunity to apply basic science concepts to the clinical experience at a more advanced level. Students have the opportunity to pursue personal interests through one of several Career Focus Tracks consisting of electives and clinical selective requirements and potentially research. Thus, each student will have some flexibility in planning an educational sequence that relates specifically to their ultimate career goals and postgraduate educational plans. Each student has a faculty adviser who helps devise the student's educational sequence and assists with career goals and postgraduate educational plans.

Doctor of Medicine/Doctor of Philosophy - McGovern Medical School and the Graduate School of Biomedical Sciences participate in a combined program leading to the MD and PhD degrees. This program is sponsored and supported by both UTHealth and UT MD Anderson Cancer Center, is administered by an MD/PhD committee, and involves faculty from both institutions. The requirements for the program meet the general requirements of both degrees in a flexible six-year program.

Doctor of Medicine/Master of Public Health - McGovern Medical School and the UTHealth School of Public Health offer a dual degree program leading to an MD degree and a Master of Public Health (MPH). The requirements established for the program meet the general requirements of both degrees. The curricula are integrated along a four- or five-year path to support student career objectives. The requirements established for the program meet the general requirements for both degrees.

Doctor of Medicine/ Oral and Maxillofacial Surgery Residency (MD/OMS) - 4-year and 6-year Advanced Education Programs in Oral and Maxillofacial Surgery are offered through McGovern Medical School. Each program prepares practitioners to treat diseases, injuries, and defects involving both the functional and aesthetic aspects of the hard and soft tissues of the oral and maxillofacial region. The basic prerequisites for both 4 and 6-year programs are a DDS or DMD degree from an accredited dental school and National Dental Boards Parts I & II.

Master of Science in Clinical Research - In August 2002, McGovern Medical School began offering a master's degree in clinical research. This degree program is designed as a focused, flexible, and affordable program to train clinical investigators in designing and conducting patient-oriented research that is of exemplary quality. The curriculum accommodates clinicians' busy schedules; classes meet one afternoon a week. The degree can be completed in two to four years, depending on the amount of time a student devotes to the program. Students may choose one of two tracks – a patient-based clinical research track or a translational research track.

Doctor of Medicine/Master of Business Administration - McGovern Medical School offers a dual degree MD/MBA program between McGovern Medical School and The University of Houston-Clear Lake. There is a need that is anticipated to increase for individuals trained in both medicine and business practices to serve numerous important roles in the medical and health care professions. The dual degree program allows students to obtain the MD and MBA degrees from McGovern Medical School and UHCL School of Business, respectively, by successful completion of the requirements of both degree programs and obtain the training needed for such positions.

Reciprocal Agreements - Through reciprocal agreements, students at other UT System components, Rice University, Baylor College of Medicine, Texas Women's University, and the University of Houston may take graduate courses for credit at UTHealth. In addition, UTHealth graduate students may take courses for credit at any of the above institutions. Mechanisms for payment of tuition or registration fees vary according to the individual institution.

Facilities

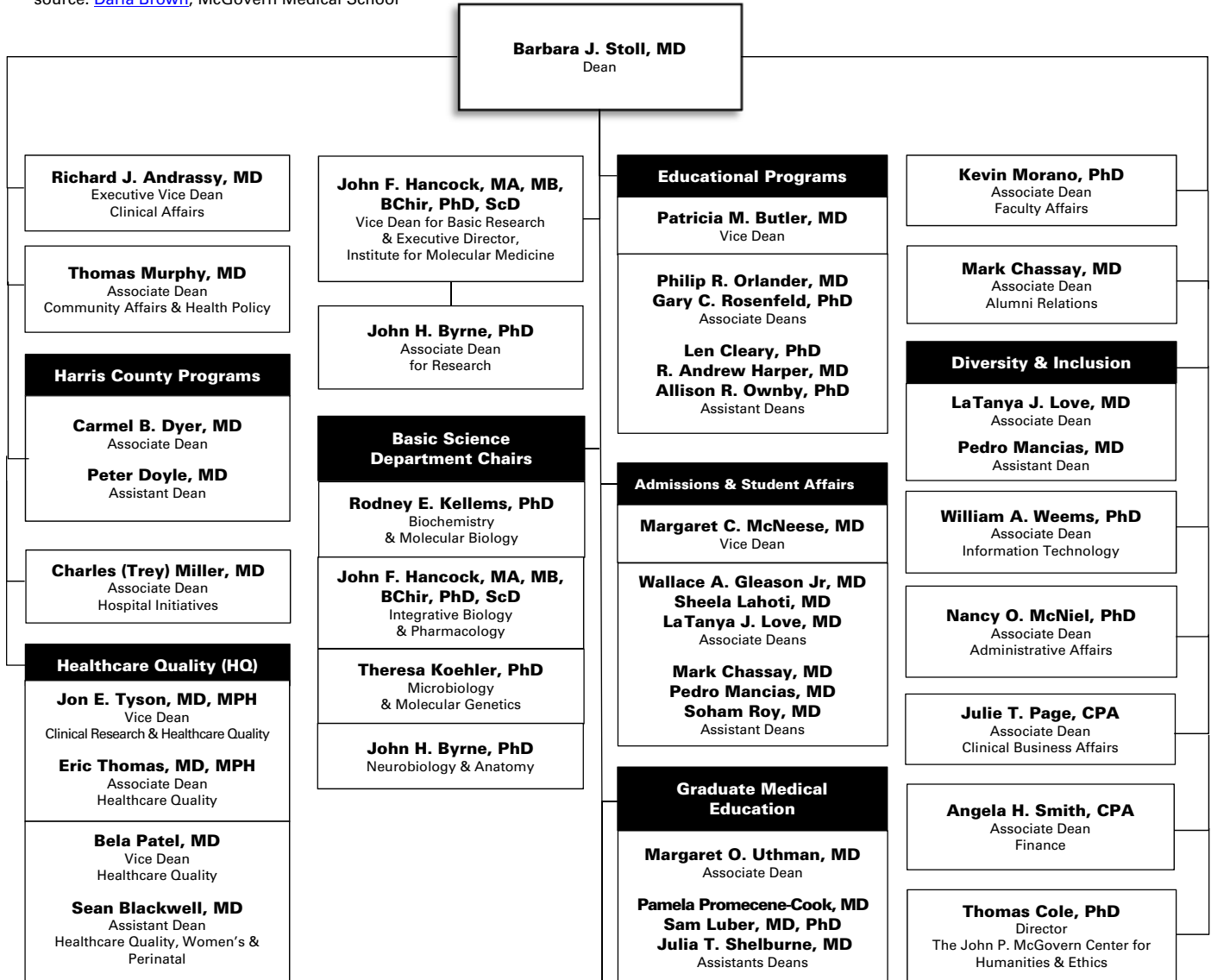
The nine-story Medical School Building (MSB) is connected on the south end to a six-story research building, the Medical School Expansion (MSE), which replaced the original John Freeman Building. On its north side, the building bridges Ross Sterling Avenue to form one continuous structure with Memorial Hermann-Texas Medical Center. The MSB contains offices, laboratories, classrooms, lecture halls, study areas, educational and biomedical communications support areas, student lounges, and administrative suites. McGovern Medical School uses the Jesse Jones Library Building for administrative and departmental functions and for clinical research activities. Four floors of the MSE are dedicated to research and two floors are devoted to a state-of-the-art vivarium. The Brown Foundation Institute of Molecular Medicine for the Prevention of Human Diseases (IMM) is located in the Faye S. Sarofim Research Building. The South Campus Research Building 3 houses research groups from Internal Medicine's Cardiovascular Medicine division, NanoMedicine and BioMedical Engineering, Orthopaedic Surgery, and IMM's Texas Therapeutics Institute. The Department of Psychiatry and Behavioral Sciences also is located on the South Campus at the Behavioral and Biomedical Sciences Building. Physician faculty provide the majority of their outpatient care in the UT Professional Building, which is located across the street from McGovern Medical School, and at a growing number of UT Physicians and Harris Health community clinics around the Greater Houston area.

Affiliated Hospitals & Group Practice

Primary affiliations are with Memorial Hermann Hospital-Texas Medical Center and the Lyndon B. Johnson General Hospital of the Harris Health System. Other major affiliates include UT MD Anderson Cancer Center, UT Harris County Psychiatric Center, and the Texas Heart Institute/CHI St. Luke's Health. Please see Patient Care section for Faculty Practice Plan (MSRDP), UT Physicians, and Affiliated Medical Services.

McGovern Medical School Organization Chart

source: [Darla Brown](#), McGovern Medical School



Clinical Science Chairs			
Holger Eitzschig, MD, PhD Anesthesiology Term Chair	Hazim J. Safi, MD Cardiothoracic & Vascular Surgery	Ronald P. Rapini, MD Dermatology	Susan D. John, MD Diagnostic & Interventional Imaging
James J. McCarthy, MD Emergency Medicine	Carlos A. Moreno, MD Family & Community Medicine	David McPherson, MD Internal Medicine	Louise McCullough, MD, PhD Neurology
Dong Kim, MD Neurosurgery	Sean Blackwell, MD Obstetrics, Gynecology & Reproductive Sciences	Robert M. Feldman, MD Ophthalmology & Visual Science	Walter R. Lowe, MD Orthopaedic Surgery
Martin Citardi, MD Otorhinolaryngology Head & Neck Surgery	Robert L. Hunter, MD, PhD Pathology & Laboratory Medicine	Kevin P. Lally, MD Pediatrics Interim	Kevin P. Lally, MD Pediatric Surgery
Gerard E. Francisco, MD Physical Medicine & Rehabilitation	Jair C. Soares, MD Psychiatry & Behavioral Sciences	Richard J. Andrassy, MD Surgery	

School of Nursing Profile

source: [David Bates](#), School of Nursing

History and Purpose

The University of Texas Health Science Center at Houston (UTHealth) School of Nursing, established in 1890 as part of the John Sealy Hospital Training School for Nurses in Galveston, is one of the oldest schools of nursing in the southwestern United States. The baccalaureate nursing program of the UT System expanded to Houston in 1972, the same year that the UT Health Science Center came into being. The UT School of Nursing was organized in 1972 and began offering the master of nursing degree in the same year. In 1976, the system structure dissolved and the School of Nursing was reorganized under the control of the health science center. The School initiated the Doctor of Science in Nursing degree program in 1995 (changed to the PhD in Nursing in 2007) and the Doctor of Nursing Practice degree program in 2006.

Leadership

In February 2015, Lorraine Frazier, PhD, RN, FAAN, FAHA, became only the fourth dean in the history of the UTHealth School of Nursing. Affiliated with UTHealth since her days as a graduate nursing student in the 1990s until leaving in 2011 to become professor and dean of the University of Arkansas for Medical Sciences (UAMS) College of Nursing, Frazier earned both her doctorate and MSN at UTHealth School of Nursing. Dean Frazier holds the John P. McGovern Distinguished Professorship and the Huffington Foundation Chair in Nursing Education Leadership.

Instructional Programs

Bachelor of Science in Nursing – The School of Nursing offers an undergraduate program leading to the degree of Bachelor of Science in Nursing (BSN). The undergraduate program is designed for students who wish to enter the profession of nursing and for nurses who have earned an associate degree or diploma in nursing and desire to obtain the baccalaureate degree. The RN-BSN Flex Online Program offers full or part-time options and may be started in the fall, summer or spring semester of each year. Effective spring 2017, the RN-BSN Online Flex Program will consist entirely of online classes, except for 90 clinical hours in the Community Health Project for RNs clinical course. The school offers the Pacesetter BSN program, which is a full-time program of four semesters, consisting of clinical, skills lab and nursing theory courses. In the Pacesetter model, students use their final 16 weeks doing full-time clinical rotations and “live the life of a nurse” while still completing their degrees. Fall, spring and summer semester starts are offered for this program, and a previous degree is not required. At 95 percent, UTHealth BSN graduates score above the national average for baccalaureate-degree first-time test takers (95 percent, compared to the national average of 85 percent) on the NCLEX licensing examination. A three-year grant from the federal Health Resources and Services Administration (HRSA) is supporting a program for a Veterans’ Bachelor of Science Degree in Nursing (VBSN). The VBSN program facilitates the transition of veterans into professional nursing by providing an opportunity for up to 10 veterans per semester to receive academic credit for prior military training and experience while also addressing veterans’ unique needs. Both Pacesetter BSN and RN-BSN students are eligible to apply.

Master of Science in Nursing – The master’s program (MSN) is designed for nurses who have the baccalaureate degree in nursing and wish to prepare for advanced practice in a specialized area with role preparation as clinical specialists, educators, administrators, or nurse practitioners. Seven program options are available in the MSN degree program: Adult/Gerontology Acute Care Nurse Practitioner, Adult/Gerontology Primary Care Nurse Practitioner, Family Nurse Practitioner, Nursing Leadership and Administration, Nursing Education, and Psychiatric/Mental Health Nurse Practitioner. In addition, MSN concentrations/Post-master’s certificates are offered in: Emergency/Trauma Care and Forensic Nursing Science.

MSN/MPH – A cooperative degree option of MSN/MPH is offered jointly by the School of Nursing and School of Public Health and allows students to earn both degrees while simultaneously enrolled in both schools.

Doctor of Philosophy in Nursing – the school has been approved to award a doctoral degree in nursing since 1995. The Doctor of Philosophy (PhD) in Nursing program is designed to prepare nurse scientists who will improve health and health care. The PhD program consists of 66 credits and admits students only in the fall semester. The curriculum includes both online and on-campus courses.

Doctor of Nursing Practice (DNP) Program – UTHealth School of Nursing was the first in Texas to offer a Doctor of Nursing Practice (DNP) degree and graduated the first DNP class in the state in May 2009. The DNP degree program is a cutting-edge *practice doctorate* that prepares advanced practice nurses with depth and breadth of knowledge and competencies to be clinical scholars recognized for outstanding direct patient care and leadership in nursing practice and healthcare organizations. This post-master’s degree program admits nurse practitioners, clinical nurse specialists and nurse anesthetists. Both part-time and full-time options are available, with starts in the fall semester only. The DNP curriculum includes 32-50 credit hours, depending on options selected, and it is designed to meet the educational needs of busy, working advanced practice nurses. An eight-semester DNP in Nursing Informatics program – a joint venture with UTHealth School of Biomedical Informatics (SBMI) – admitted its first students in the fall 2015 semester.

BSN-DNP in Nurse Anesthesia Program

UTHealth School of Nursing was the first and only public university in the state to offer a nine-semester program from the BSN degree to a DNP in Nurse Anesthesia. The BSN to DNP in Nurse Anesthesia curriculum, approved by the Council on Accreditation of Nurse Anesthesia Educational Programs, includes 112 credits.

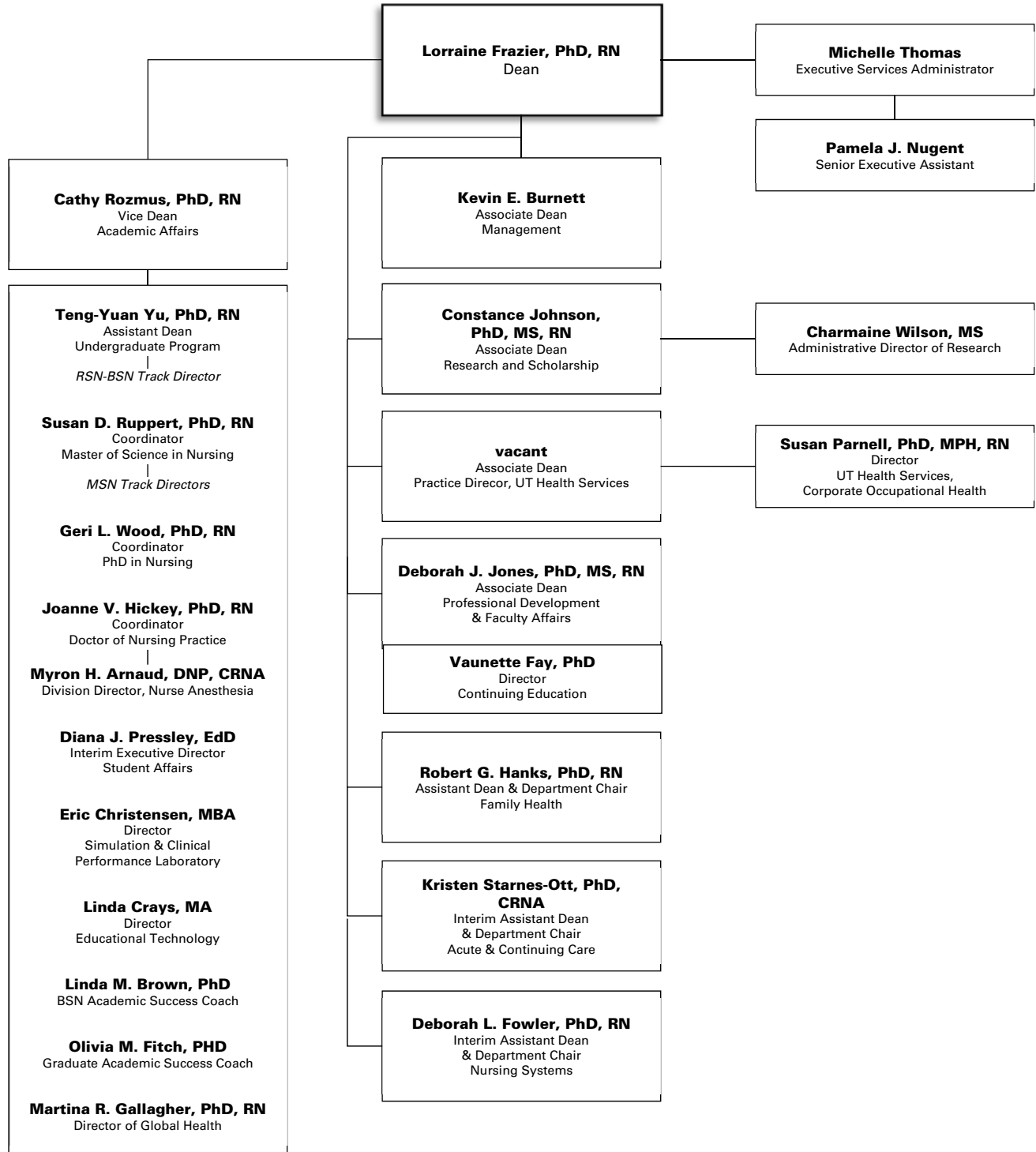
Facilities and Affiliations

Clinical learning experience is available within other UT components in the Texas Medical Center and in the broader community. Affiliate institutions include: the Memorial Hermann Healthcare System, CHI St. Luke’s Health, Texas Children’s Hospital, St. Joseph Hospital, TIRR Memorial Hermann, UT Harris County Psychiatric Center and other healthcare facilities. Students also have opportunities for learning experiences in neighborhood health centers, nursing homes, day care centers, city and county health departments, mental health facilities and physicians’ offices and clinics.

Clinical training and patient care is offered by UT Health Services (UTHS), established in 1991. UT Health Services is located at 7000 Fannin St., Suite 1620. This clinic provides comprehensive primary care across the life span, occupational medicine, health education, travel medicine and laboratory services to individuals within the university and to the larger community. The providers are nurse practitioners, and a physician periodically is available in clinic to meet any additional medical needs. UTHS has been awarded Level 3 recognition by the National Committee for Quality Assurance (NCQA) Patient-Centered Medical Home 2011™ program, which is the highest recognition NCQA provides for patient-centered, coordinated care that supports access, communication and patient involvement. Contact 713-500-3267 or go to UTHealthservices.com for more information.

School of Nursing Organization Chart

source: [David Bates](#), School of Nursing



School of Public Health Profile

source: [Shannon Neufeld](#), School of Public Health

UTHealth School of Public Health has been working since 1967 to improve health of the people of Texas, the nation and the world by providing the highest quality graduate education, translational research and service to the profession and the community. The vision of the school is for the improved health of the population through prevention, better health outcomes and a trained population health workforce. With six campuses throughout the state, (Houston, Austin, Brownsville, Dallas, El Paso and San Antonio) the school has established a strong reputation as a leader in public health. The School of Public Health is the No. 21 ranked school of public health in the United States by *U.S. News and World Report*. The school has four academic departments: Biostatistics; Epidemiology, Human Genetics and Environmental Sciences; Management, Policy and Community Health; and Health Promotion and Behavioral Sciences. There are also seven research centers within the school focusing on specialized research needs in the diverse areas of public health.

History

Authorized in 1947, the Texas State Legislature appropriated funds for the School of Public health in 1967. The first student was admitted in 1969. Enrollment grew by leaps and bounds during the first 10 years, a testimony to the previously unfulfilled need for public health professionals.

Locations

The largest campus of the school is located in Houston at the world-renowned Texas Medical Center. The main structure, the Reuel A. Stallones Building, was named for the school's first dean. The 10-story, 220,000 gross-square-foot building is located in a park setting with outstanding classroom, computer and research laboratory facilities. To address the need for graduate-level public health education across the state of Texas, additional campuses were established in San Antonio (1979), El Paso (1992), Dallas (1998), Brownsville (2001), and Austin (2007). Each of these additional campuses has an affiliation with a host campus in The University of Texas System. The host campuses include: UT Austin; UT Rio Grande Valley; UT El Paso; UT Health Science Center at San Antonio; and UT Southwestern Medical Center at Dallas.

Education Degree Programs

The School of Public Health offers four degree programs leading to the skills necessary for public health careers. Professional degrees can be used for practicing public health outside of higher education – the Master of Public Health (MPH) and the Doctor of Public Health (DrPH). Academic degrees are primarily used for teaching and research – the Master of Science in public health (MS) and the Doctor of Philosophy in public health (PhD). Students learn to conduct research on important public health concerns at the School of Public Health while working with faculty teams who uncover answers to urgent public health issues.

Master of Public Health - The Master of Public Health (MPH) degree is a professional degree in the field. Students are admitted to one of the departments or regional campuses where they complete a series of courses that cover the breadth of public health and develop competencies appropriate for their elected discipline. Most full-time students take 18 to 24 months to complete the degree. Requirements of the MPH degree are: completion of coursework; a planned, supervised and evaluated practice experience (practicum); and a culminating experience demonstrating a substantial knowledge of public health.

Master of Science - The Master of Science (MS) degree signifies academic accomplishment in a public health discipline and is offered to those who plan careers in teaching and research in the fields of biostatistics and epidemiology. The academic plan will be guided by the faculty advisor, the student and the advisory committee to meet the student's specific educational goals. A student elects one field as a major and selects another public health discipline as a minor area of study. Most fulltime MS students take 12-24 months to complete the degree. Requirements of the MS degree are: coursework and a thesis.

Doctor of Public Health - The Doctor of Public Health (DrPH) degree is primarily designed for those who plan careers involving professional practice, teaching or research. Students will be affiliated with one of the four departments; however, courses may be taken in any department. DrPH programs in select areas are available at regional campuses as well as at the main campus in Houston. In order to complete a DrPH degree, students are required to complete one major and minor area of study in one of the five public health disciplines and one public health breadth area; OR one major and two minors. Requirements of the DrPH degree are: coursework, a practicum experience, a preliminary exam and a dissertation.

Doctor of Philosophy - The Doctor of Philosophy (PhD) degree in Public Health represents outstanding scholarly attainment and signifies a capacity for independent study. It is primarily a research and teaching degree. PhD students select one major and one minor area in addition to one public health breadth area to study; OR one major and two minors. Requirements of the PhD degree are: coursework, a preliminary exam and an original research dissertation.

Concentrations

Any student in a degree program can choose to focus their studies in one of several available concentrations. A concentration is defined as a problem-based area that spans disciplinary fields and therefore draws upon faculty expertise in two or more departments. Concentrations are supported by a specific curriculum and consist of nine-14 credit hours of coursework. The concentration will be noted on transcripts but not on a final diploma. The areas of concentrations available are: global health; health disparities; leadership studies; maternal and child health; physical activity and health; and nutrition and public health.

Dual Degree Programs

The School of Public Health collaborates with many universities to provide our students every opportunity to expand their knowledge base and achieve advanced degrees. Our dual degree programs are growing each year. Visit our website for a complete list and more information: <https://sph.uth.edu/academics/dual-degree/>.

Non-Degree Curricula

UTHealth School of Public Health also offers opportunities for education and training that do not lead to a public health degree. Non-degree curricula provide an opportunity to those students to take courses at the School of Public Health for credit. Non-degree students generally are allowed to take a maximum of 16 credits in School of Public Health courses unless the student is associated with a formally recognized educational collaboration or a certificate curriculum.

Certificates

Certificate courses are intended for public health practitioners and individuals considering a graduate degree in the field. The five courses in these non-degree areas cover the core content of the disciplines that are basic to public health and are available at all campuses. These are the current certificates available: general public health; public health informatics; health disparities; and maternal and child health.

Executive Education

Our Center for Management and Policy in Population Health offers a wide variety of executive education curricula for working health and medical professionals looking to enhance their healthcare management expertise. Students learn to meet the unique challenges and changes confronting the healthcare industry. Continuing Education Certificates are available in the following areas: Academic Medical Department Leadership; Physician Leadership; and Lean Six Sigma Green Belt.

Industrial Hygiene

Industrial hygiene is the science devoted to anticipating, recognizing, evaluating and controlling environmental factors posing risks to workers and the community. This curriculum offers a high level of faculty/student interaction and emphasizes practical experiences through hands-on field activities in a variety of settings, including industry, healthcare, agriculture, petro-chemical, business and government.

Occupational and Environmental Medicine Residency

The primary goal of the Occupational and Environmental Medicine Residency is to train practicing physicians to be qualified for careers in occupational and environmental medicine in private practice, industry, government, military or academia. This two-year track includes one academic year leading to completion of the requirements for a Master of Public Health (MPH) degree, and one practicum year of experiential rotations in various aspects of professional practice in the field. Graduates are usually eligible to apply for board certification in occupational medicine by the American Board of Preventive Medicine (ABPM).

Dietetic Internship

The Dietetic Internship combines a graduate degree with an accredited dietetic internship. Students may work toward either the master's or doctoral degree in the School of Public Health depending on interests and prior degrees held. The internship provides students with the opportunity for advanced study as well as applied supervised practice experience in a variety of affiliated health care institutions and local businesses. The school now offers interns and other students the opportunity to work in three new facilities: the holistic garden, the research and development kitchen and also the state-of-the-art simulation lab, where students can practice nutrition care on an advanced patient simulator that can display physiological and neurological symptoms. Graduates of the Dietetic Internship are prepared to practice as entry-level dietitians with a graduate degree and also meet requirements for active membership in the American Dietetic Association. Upon successful completion of the Dietetic Internship, interns are eligible to take the registration examination for dietitians and are qualified to apply for dietetic licensure in the state of Texas.

Public Health Practice

The School of Public Health provides practice experiences for students, faculty and the public health workforce. By doing this, the school brings the classroom to the community and the community to the classroom.

The opportunity to apply classroom education towards a public health problem in a work setting is a critical component to earning a professional graduate degree at UTHealth School of Public Health. Therefore, it is required that students in the MPH and DrPH degree programs successfully complete a practicum experience. MS and PhD students are not required to undergo a practicum experience, but they are encouraged to participate in the program to they may strengthen their practical application skills and potentially enhance the impact of their future research activities.

The benefits of the educational practice component are many. Students learn practical skills, develop useful contacts in the practice community, gain valuable work experience in the field of public health and produce final work at a high quality sufficient to be published or presented at a conference.

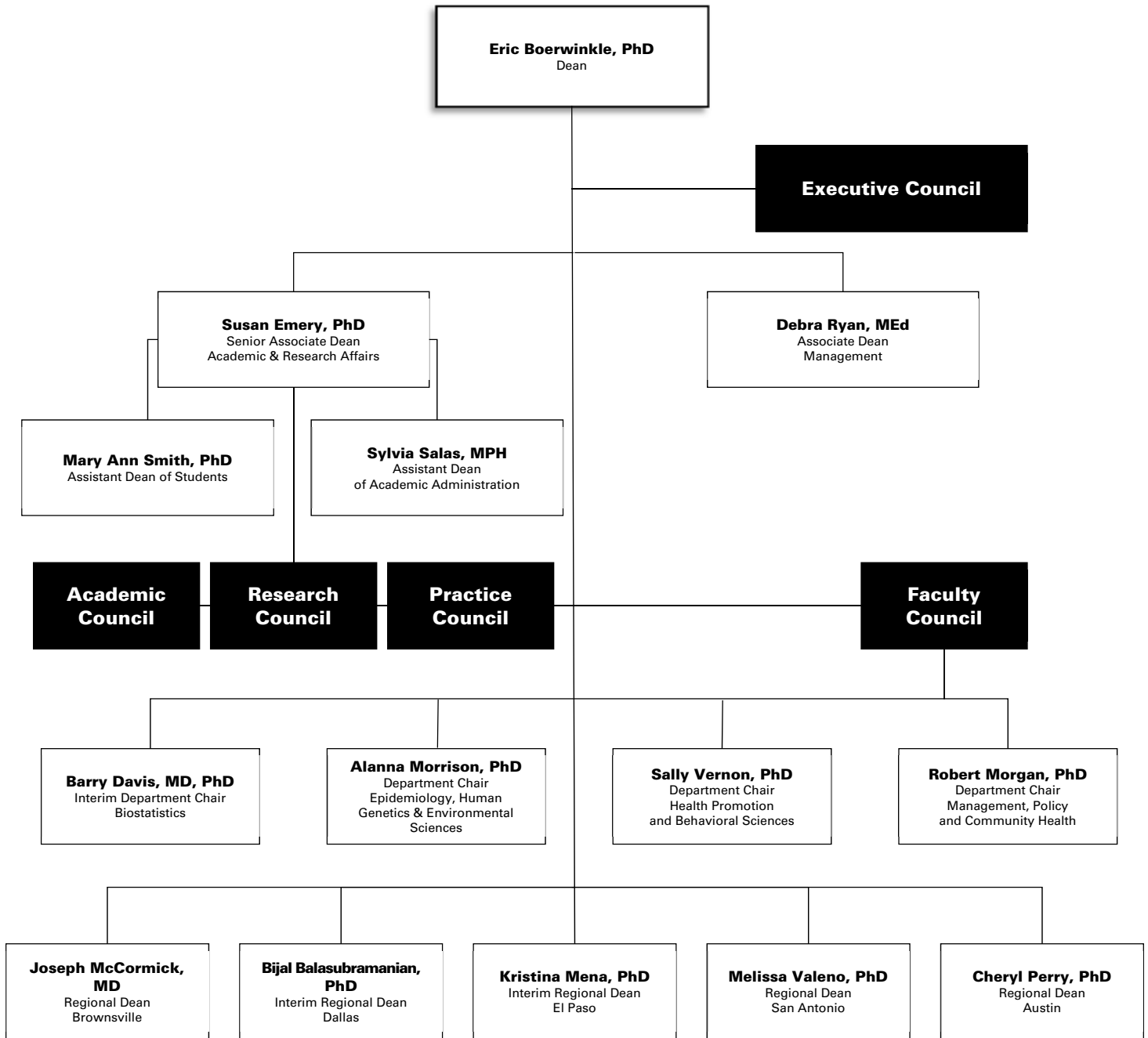
The benefits to preceptors and the communities they serve are equally notable. The types and locations of projects and preceptor organizations vary greatly, but they all benefit from the contribution of a trained graduate student to solve real-world public health problems.

Accreditation

UTHealth School of Public Health, first accredited in 1969, has been continuously accredited by the Council on Education for Public Health (CEPH). In addition, the following curricula at the School of Public Health are accredited by their respective accrediting bodies: American Dietetic Association - Dietetic Internship; Accreditation Council for Education in Nutrition and Dietetics (ACEND) - Dietetic Internship; Accreditation Council on Graduate Medical Education (ACGME) - Occupational and Environmental Medicine Residency; Applied Science Accreditation Commission of Accreditation Board of Education and Technology (ABET) - Master's Level Industrial Hygiene curriculum.

School of Public Health Organization Chart

source: [Shannon Neufeld](#), School of Public Health



Education

Summary of Academic Programs & Accreditation	23
Applicant Profile	24
Headcount Enrollment by Full-time/Part-time Status	25
Headcount Enrollment by Race/Ethnicity	26
Headcount Enrollment by Race/Ethnicity (Domestic Students only)	28
Headcount Enrollment by Level	30
Headcount Enrollment by Level, Race/Ethnicity & Gender	31
Headcount Enrollment by Academic Program	32
Headcount Enrollment by Residency	34
Full-time Equivalent (FTE) Student Enrollment	35
GSBS Students by Institutional Affiliation	36
Postdoctoral Research Fellows	36
Licensure Examination Results	37
Degrees Conferred by School	38
Degrees Conferred by Academic Program	40
Degrees Conferred by Level & Race/Ethnicity	42
Profile of Medical Residents in ACGME Accredited Programs	43
McGovern Medical School Graduating Class Specialty Choices	44
School of Dentistry Residents & Postgraduate Students	45
Medical (MCAT) & Dental (DAT) Applicant Scores	46
Tuition & Fees	47
Student Financial Aid Profile	50
Total Student Financial Aid Awards by School	51
Total Student Financial Aid Awards by Major Program	52
Average Student Financial Aid Awards by School	53
Average Student Debt on Graduation	54
Total Graduates by School	55

Summary of Academic Programs & Accreditation

The University of Texas Health Science Center at Houston is accredited by the Southern Association of Colleges and Schools Commission on Colleges to award certificate, undergraduate, masters, doctoral, and professional degrees. Contact the Commission on Colleges at 1866 Southern Lane, Decatur, Georgia 30033-4097 or call 404.679.4500 for questions about the accreditation of The University of Texas Health Science Center at Houston.

The list below provides a comprehensive listing of the federally-recognized accrediting agencies that review various UTHHealth academic programs.

	Entity	Last	Next
The University of Texas Health Science Center at Houston			
SACSCOC			
School of Dentistry			
DDS	CODA	2012	2019
BS (Dental Hygiene)	CODA	2012	2019
Certificate in Advanced Education Programs	CODA	2012	2019
Certificate in Dental Hygiene	CODA	2012	2019
Certificate in Oral & Maxillofacial Surgery	CODA	2015	2020
McGovern Medical School			
MD	LCME	2012	2020
School of Nursing			
BSN, MSN, DNP	CCNE	2011	2021
Nurse Anesthesia	COA-NAEP	2011	2021
School of Public Health			
MPH, MS, DrPH, PhD	CEPH	2012	2019

SACSCOC: Southern Association of Colleges & Schools Commission on Colleges

CODA: Commission on Dental Accreditation

LCME: Liaison Committee on Medical Education

CCNE: Commission on Collegiate Nursing Education

COA-NAEP: Council on Accreditation of Nurse Anesthesia Educational Programs

CEPH: Commission on the Education of Public Health

Applicant Profile *Fall 2016*

source: [Robert Jenkins](#), Office of the Registrar

¹ in this and all other pertinent Fact Book tables, minorities include Black, Hispanic, Native American, and Pacific Islander.

	Grand Total Male + Female	Male	Female	Unidentified	Minorities¹
School of Biomedical Informatics					
Applications received	186	98	88	0	0
Admitted	111	57	54	0	0
Denied	40	21	19	0	0
No action/pending/incomplete	35	20	15	0	0
School of Dentistry					
<i>DDS</i> Applications received	1,446	700	746	8	311
Admitted	103	41	62	4	15
Denied	1,271	623	648	4	269
Withdrew after acceptance	72	36	36	13	15
<i>ACAD</i> Applications received	145	13	132	0	66
Admitted	45	4	41	0	15
Denied	32	1	31	0	18
Pending/incomplete/waitlist	68	8	60	0	33
Graduate School of Biomedical Sciences					
Applications received	835	323	512	25	96
Admitted	170	62	108	6	21
Denied	640	253	387	18	71
No action/pending	25	8	17	1	4
McGovern Medical School					
<i>MD</i> Applications received	5,130	2,715	2,415	217	1,330
Interviewed	1,026	511	522	212	50
Admitted	240	113	127	13	59
<i>MS</i> Applications received	7	2	5	0	2
Admitted	5	1	4	0	1
Denied	0	0	0	0	0
Pending/incomplete/waitlist	2	1	1	0	0
School of Nursing					
Applications received	1,213	193	1,017	3	695
Admitted	449	74	375	0	257
Denied	601	100	499	2	363
Pending/incomplete/waitlist	163	19	143	1	695
School of Public Health					
Applications received	1,547	432	1,115	0	1,123
Admitted	838	216	622	0	519
Denied	709	216	493	0	574
Pending/incomplete/waitlist	0	0	0	0	0

Headcount Enrollment by Full-time/Part-time Status *Fall 2012-2016*

source: [Robert Jenkins](#), Office of the Registrar CBM001 Certified Enrollment Report to the Texas Higher Education Coordinating Board, October 2016

	2012		2013		2014		2015		2016	
	Number	Percent	Number	Percent	Number	Percent	Number	Percent	Number	Percent
School of Biomedical Informatics										
Full-time	39	28%	40	32%	45	26%	48	20%	71	24%
Part-time	101	72%	86	68%	126	74%	197	80%	220	76%
SBMI Total	140		126		171		245		291	
School of Dentistry										
Full-time	487	97%	499	95%	519	97%	531	97%	541	97%
Part-time	16	3%	24	5%	17	3%	17	3%	19	3%
UTSD Total	503		523		536		548		560	
Graduate School of Biomedical Sciences										
Full-time	510	92%	465	91%	424	90%	394	90%	389	92%
Part-time	45	8%	48	9%	48	10%	43	10%	36	8%
GSBS Total	555		513		472		437		425	
McGovern Medical School										
Full-time	966	93%	965	91%	960	92%	982	93%	968	90%
Part-time	71	7%	97	9%	85	8%	78	7%	107	10%
MMS Total	1,037		1,062		1,045		1,060		1,075	
School of Nursing										
Full-time	691	72%	711	64%	691	64%	869	70%	686	46%
Part-time	265	28%	405	36%	381	36%	378	30%	791	54%
SON Total	956		1,116		1,072		1,247		1,477	
School of Public Health										
Full-time	727	56%	610	48%	621	49%	628	49%	617	50%
Part-time	571	44%	664	52%	639	51%	646	51%	606	50%
SPH Total	1,298		1,274		1,260		1,274		1,223	
UTHealth Total										
Full-time	3,420	76%	3,290	71%	3,260	72%	3,452	72%	3,272	65%
Part-time	1,069	24%	1,324	29%	1,296	28%	1,359	28%	1,779	35%
Grand Total UTHealth	4,489		4,614		4,556		4,811		5,051	

Headcount Enrollment by Race/Ethnicity *Fall 2012 - 2016*

source: [Robert Jenkins](#), Office of the Registrar CBM001 Certified Enrollment Report to the Texas Higher Education Coordinating Board, October 2016

	2012		2013		2014		2015		2016	
	Number	Percent	Number	Percent	Number	Percent	Number	Percent	Number	Percent
School of Biomedical Informatics										
American Indian	0	0%	0	0%	0	0%	1	0%	0	0%
Asian	31	22%	23	18%	43	25%	49	20%	64	22%
Black	21	15%	14	11%	22	13%	34	14%	41	14%
Hispanic	5	3%	15	12%	17	10%	39	16%	39	13%
International	15	10%	19	15%	22	13%	42	17%	59	20%
Multi-Racial	2	1%	2	2%	6	4%	6	2%	9	3%
Pacific Islander	0	0%	2	2%	0	0%	1	0%	2	1%
Unidentified	3	2%	4	3%	3	2%	9	4%	7	2%
White	63	45%	47	37%	58	34%	64	26%	70	24%
SBMI Total	140		126		171		245		291	
School of Dentistry										
American Indian	1	0%	1	0%	1	0%	1	0%	1	0%
Asian	105	20%	91	17%	89	17%	98	18%	127	23%
Black	20	4%	27	5%	25	5%	26	5%	23	4%
Hispanic	69	13%	98	19%	109	20%	119	22%	113	20%
International	13	2%	14	3%	13	2%	13	2%	16	3%
Multi-Racial	8	1%	13	2%	15	3%	16	3%	12	2%
Pacific Islander	0	0%	1	0%	1	0%	1	0%	0	0%
Unidentified	23	4%	31	6%	17	3%	14	3%	15	3%
White	264	52%	247	47%	266	50%	260	47%	253	45%
UTSD Total	503		523		536		548		560	
Graduate School of Biomedical Sciences										
American Indian	1	0%	0	0%	0	0%	0	0%	0	0%
Asian	58	10%	48	9%	38	8%	37	8%	31	7%
Black	16	2%	16	3%	14	3%	14	3%	11	3%
Hispanic	52	9%	48	9%	43	9%	38	9%	37	9%
International	204	36%	174	34%	168	36%	146	33%	148	35%
Multi-Racial	2	0%	2	0%	2	0%	3	1%	3	1%
Unidentified	14	2%	27	5%	23	5%	31	7%	32	8%
White	208	37%	198	39%	184	39%	168	38%	163	38%
GSBS Total	555		513		472		437		425	
McGovern Medical School										
American Indian	2	0%	1	1%	1	1%	2	0%	3	0%
Asian	166	16%	180	17%	172	16%	220	21%	239	22%
Black	60	5%	58	5%	65	6%	62	6%	63	6%
Hispanic	73	7%	130	12%	154	15%	145	14%	153	14%
International	42	4%	58	5%	54	5%	40	4%	63	6%
Multi-Racial	11	1%	19	2%	26	2%	27	3%	30	3%
Unidentified	53	5%	58	5%	52	5%	41	4%	35	3%
White	630	60%	558	53%	521	50%	523	49%	489	45%
MMS Total	1,037		1,062		1,045		1,060		1,075	

continued **Headcount Enrollment by Race/Ethnicity Fall 2012 – 2016**

	2012		2013		2014		2015		2016	
	Number	Percent	Number	Percent	Number	Percent	Number	Percent	Number	Percent
School of Nursing										
American Indian	2	0%	1	0%	4	0%	6	0%	3	0%
Asian	124	13%	169	15%	192	18%	200	16%	234	16%
Black	98	10%	112	10%	136	13%	180	14%	252	17%
Hispanic	74	7%	199	18%	200	19%	261	21%	317	22%
International	42	4%	34	3%	21	2%	25	2%	19	1%
Multi-Racial	31	3%	29	3%	25	2%	44	4%	47	3%
Pacific Islander	0	0%	4	0%	6	1%	6	0%	8	1%
Unidentified	30	3%	64	6%	14	1%	30	2%	24	2%
White	555	58%	504	45%	474	44%	495	40%	573	39%
SON Total	956		1,116		1,072		1,247		1,477	
School of Public Health										
American Indian	2	0%	3	0%	2	0%	2	0%	2	0%
Asian	183	14%	135	11%	158	13%	149	12%	179	15%
Black	124	9%	107	8%	103	8%	101	8%	91	7%
Hispanic	107	8%	183	14%	172	14%	190	15%	192	16%
International	315	24%	301	24%	292	23%	290	23%	258	21%
Multi-Racial	25	2%	16	1%	30	2%	22	2%	24	2%
Unidentified	62	5%	135	11%	83	7%	168	13%	63	5%
White	480	37%	394	31%	420	33%	352	28%	414	34%
SPH Total	1,298		1,274		1,260		1,274		1,223	
UTHealth Total										
American Indian	8	0%	6	0%	8	0%	12	0%	9	0%
Asian	667	15%	646	14%	692	15%	753	16%	874	17%
Black	339	7%	334	7%	365	8%	417	9%	481	10%
Hispanic	380	8%	673	15%	695	15%	792	16%	851	17%
International	631	14%	600	13%	570	13%	556	12%	563	11%
Multi-Racial	79	2%	81	2%	104	2%	118	2%	125	2%
Pacific Islander	0	0%	7	0%	7	0%	8	0%	10	0%
Unidentified	185	4%	319	7%	192	4%	293	6%	176	3%
White	2,200	49%	1,948	42%	1,923	42%	1,862	39%	1,962	39%
Grand Total UTHealth	4,489		4,614		4,556		4,811		5,051	

Headcount Enrollment by Race/Ethnicity (Domestic Students only) Fall 2013- 2016

source: [Robert Jenkins](#), Office of the Registrar CBM001 Certified Enrollment Report to the Texas Higher Education Coordinating Board, October 2016

	2013		2014		2015		2016	
	Number	Percent	Number	Percent	Number	Percent	Number	Percent
School of Biomedical Informatics								
Asian	23	21%	43	29%	49	24%	64	28%
Black	14	13%	22	15%	34	17%	41	18%
Hispanic	15	14%	17	11%	39	19%	39	17%
American Indian	0	0%	0	0%	1	0%	0	0%
White	47	44%	58	39%	64	32%	70	30%
Pacific Islander	2	2%	0	0%	1	0%	2	1%
Unidentified	4	4%	3	2%	9	4%	7	3%
Multi-Racial	2	2%	6	4%	6	3%	9	4%
SBMI Total	107		149		203		232	
School of Dentistry								
Asian	91	18%	89	17%	98	18%	127	23%
Black	27	5%	25	5%	26	5%	23	4%
Hispanic	98	19%	109	21%	119	22%	113	21%
American Indian	1	0%	1	0%	1	0%	1	0%
White	247	49%	266	51%	260	49%	253	47%
Pacific Islander	1	0%	1	0%	1	0%	0	0%
Unidentified	31	6%	17	3%	14	3%	15	3%
Multi-Racial	13	3%	15	3%	16	3%	12	2%
UTSD Total	509		523		535		544	
Graduate School of Biomedical Sciences								
Asian	48	14%	38	13%	37	13%	31	11%
Black	16	5%	14	5%	14	5%	11	4%
Hispanic	48	14%	43	14%	38	13%	37	13%
American Indian	0	0%	0	0%	0	0%	0	0%
White	198	58%	184	61%	168	58%	163	59%
Unidentified	27	8%	23	8%	31	11%	32	12%
Multi-Racial	2	1%	2	1%	3	1%	3	1%
GSBS Total	339		304		291		277	
McGovern Medical School								
Asian	180	18%	172	17%	220	22%	239	24%
Black	58	6%	65	7%	62	6%	63	6%
Hispanic	130	13%	154	16%	145	14%	153	15%
American Indian	1	0%	1	0%	2	0%	3	0%
White	558	56%	521	53%	523	51%	489	48%
Unidentified	58	6%	52	5%	41	4%	35	3%
Multi-Racial	19	2%	26	3%	27	3%	30	3%
MMS Total	1,004		991		1,020		1,012	

continued **Headcount Enrollment by Race/Ethnicity** (Domestic Students only) Fall 2013 - 2016

	2013		2014		2015		2016	
	Number	Percent	Number	Percent	Number	Percent	Number	Percent
School of Nursing								
Asian	169	16%	192	18%	200	16%	234	16%
Black	112	10%	136	13%	180	15%	252	17%
Hispanic	199	18%	200	19%	261	21%	317	22%
American Indian	1	0%	4	0%	6	0%	3	0%
White	504	47%	474	45%	495	41%	573	39%
Pacific Islander	4	0%	6	1%	6	0%	8	1%
Unidentified	64	6%	14	1%	30	2%	24	2%
Multi-Racial	29	3%	25	2%	44	4%	47	3%
SON Total	1,082		1,051		1,222		1,458	
School of Public Health								
Asian	135	14%	158	16%	149	15%	179	19%
Black	107	11%	103	11%	101	10%	91	9%
Hispanic	183	19%	172	18%	190	19%	192	20%
American Indian	3	0%	2	0%	2	0%	2	0%
White	394	40%	420	43%	352	36%	414	43%
Unidentified	135	14%	83	9%	168	17%	63	7%
Multi-Racial	16	2%	30	3%	22	2%	24	2%
SPH Total	973		968		984		965	
UTHealth Total								
Asian	646	16%	692	17%	753	18%	874	19%
Black	334	8%	365	9%	417	10%	481	11%
Hispanic	673	17%	695	17%	792	19%	851	19%
American Indian	6	0%	8	0%	12	0%	9	0%
White	1,948	49%	1,923	48%	1,862	44%	1,962	44%
Pacific Islander	7	0%	7	0%	8	0%	10	0%
Unidentified	319	8%	192	5%	293	7%	176	4%
Multi-Racial	81	2%	104	3%	118	3%	125	3%
Grand Total UTHealth	4,014		3,986		4,255		4,488	

Headcount Enrollment by Level *Fall 2007-2016*

source: [Robert Jenkins](#), Office of the Registrar CBM001 Certified Enrollment Report to the Texas Higher Education Coordinating Board, October 2016

	2007	2008	2009	2010	2011	2012	2013	2014	2015	2016
School of Biomedical Informatics										
Graduate	43	97	97	115	126	85	99	124	140	148
Certificate	0	0	0	0	0	54	27	46	100	143
Non-degree	37	2	6	5	10	1	0	1	5	0
SBMI Total	80	99	103	120	136	140	126	171	245	291
School of Dentistry										
Undergraduate	65	83	78	76	79	74	73	78	72	70
Undergraduate Certificate	0	0	0	0	0	0	0	0	0	11
Graduate	29	30	25	29	29	31	32	33	29	35
Professional	300	324	329	333	336	359	371	387	402	405
Post Graduate Certificate	58	34	42	35	40	39	47	38	45	39
UTSD Total	452	471	474	473	484	503	523	536	548	560
Graduate School of Biomedical Sciences										
Graduate	529	524	543	546	540	517	483	440	411	402
Non-degree	49	46	50	40	35	38	30	32	26	23
GSBS Total	578	570	593	586	575	555	513	472	437	425
McGovern Medical School										
Graduate	58	55	67	71	75	11	11	8	10	13
Certificate	0	0	0	0	0	60	80	0	64	94
Non-degree	0	0	0	0	0	0	6	77	4	0
Professional	877	908	942	954	942	966	965	960	982	968
MMS Total	935	963	1,009	1,025	1,017	1,037	1,062	1,045	1,060	1,075
School of Nursing										
Undergraduate	364	385	378	498	515	489	620	579	597	596
Graduate	365	343	347	350	403	425	457	457	573	814
Non-degree	42	31	40	38	45	42	39	36	77	67
SON Total	771	759	765	886	963	956	1,116	1,072	1,247	1,477
School of Public Health										
Graduate	801	954	951	1,319	1,334	1,231	1,102	1,084	1,094	1,086
Certificate	0	0	0	0	0	0	104	100	109	105
Non-degree	158	49	74	76	91	67	68	76	71	32
SPH Total	959	1,003	1,025	1,395	1,425	1,298	1,274	1,260	1,274	1,223
UTHealth Total										
Undergraduate	429	468	456	574	594	557	693	657	669	666
Undergraduate Certificate	0	0	0	0	0	0	0	0	0	11
Graduate	1,825	2,003	2,030	2,430	2,507	2,212	2,184	2,146	2,257	2,498
Professional	1,177	1,232	1,271	1,287	1,278	1,325	1,336	1,347	1,384	1,373
Post Graduate Certificate	0	0	0	0	0	0	0	0	0	39
Certificate	58	34	42	35	40	245	258	184	318	342
Non-degree	286	128	170	159	181	150	143	222	183	122
Grand Total UTHealth	3,775	3,865	3,969	4,485	4,600	4,489	4,614	4,556	4,811	5,051

Headcount Enrollment by Level, Race/Ethnicity & Gender Fall 2016

source: [Robert Jenkins](#), Office of the Registrar CBM001 Certified Enrollment Report to the Texas Higher Education Coordinating Board, October 2016

School & Level	Asian		Black		Inter-national		Hispanic		Amer. Indian		White		Unidentified		Hawaiian/Pacific Islander		Multi-Racial		Grand Total		
	M	F	M	F	M	F	M	F	M	F	M	F	M	F	M	F	M	F	M	F	Total
School of Biomedical Informatics																					
Graduate	15	18	6	22	3	7	12	12	0	0	11	27	1	3	0	0	2	4	50	93	143
Certificate	13	18	5	8	28	21	3	12	0	0	20	12	1	2	2	0	2	1	74	74	148
Total SBMI	13	18	5	8	28	21	3	12	0	0	20	12	1	2	2	0	2	1	124	167	291
Graduate School of Biomedical Sciences																					
Non-degree	3	2	0	0	1	2	1	1	0	0	6	5	1	1	0	0	0	0	12	11	23
Graduate	11	15	2	9	69	76	14	21	0	0	62	90	14	16	0	0	1	2	173	229	402
Total GSBS	14	17	2	9	70	78	15	22	0	0	68	95	15	17	0	0	1	2	185	240	425
McGovern Medical School																					
1st Year Medical	22	36	5	11	0	0	24	20	1	1	53	54	9	3	0	0	4	3	118	128	246
2nd Year Medical	50	33	6	9	0	0	11	18	1	0	77	44	2	5	0	0	2	3	149	112	261
3rd Year Medical	20	28	6	11	1	0	22	17	0	0	62	44	3	3	0	0	4	6	118	109	227
4th Year Medical	29	17	5	7	0	0	16	13	0	0	74	57	6	2	0	0	4	4	134	100	234
Total MMS - MD	121	114	22	38	1	0	73	68	2	1	266	199	20	13	0	0	14	16	519	449	968
McGovern Medical School - Academic																					
Graduate	0	0	0	0	1	0	0	1	0	0	3	8	0	0	0	0	0	0	4	9	13
Certificate	3	1	2	1	34	27	5	6	0	0	3	10	1	1	0	0	0	0	48	46	94
Total MMS - Academic	3	1	2	1	35	27	5	7	0	0	6	18	1	1	0	0	0	0	52	55	107
School of Dentistry																					
1st Year Dental	14	27	2	1	0	1	4	8	0	0	17	22	2	2	0	0	2	1	41	62	103
2nd Year Dental	7	17	1	3	0	0	11	10	0	0	20	31	0	0	0	0	1	2	40	63	103
3rd Year Dental	9	6	0	3	0	0	6	16	0	0	25	28	4	0	0	0	0	2	44	55	99
4th Year Dental	8	7	3	3	0	0	13	8	0	0	28	22	1	4	0	0	2	1	55	45	100
Total UTSD - DDS	38	57	6	10	0	1	34	42	0	0	90	103	7	6	0	0	5	6	180	225	405
School of Dentistry - Academic																					
Graduate	3	5	1	0	5	1	5	2	0	0	8	5	0	0	0	0	0	0	22	13	35
Post-graduate certificate	2	7	0	1	2	2	1	2	0	1	10	10	0	1	0	0	0	0	15	24	39
Undergraduate certificate	0	1	0	2	0	0	1	2	0	0	0	4	0	1	0	0	0	0	1	10	11
Undergraduate	4	10	0	3	1	4	0	24	0	0	0	23	0	0	0	0	0	1	5	65	70
Total UTSD - Acad.	9	23	1	6	8	7	7	30	0	1	18	42	0	2	0	0	0	1	43	112	155
School of Nursing																					
Graduate	11	125	20	149	2	7	31	101	0	0	56	272	2	10	0	2	2	24	123	690	814
Undergraduate	17	72	6	62	1	7	19	156	1	1	33	188	2	9	2	3	4	13	85	511	596
Non-degree	3	6	0	15	0	2	1	9	0	1	8	16	0	1	0	1	1	3	13	54	67
Total SON	31	203	26	226	3	16	51	266	1	2	97	476	4	20	2	6	7	40	221	1,255	1,477
School of Public Health																					
Graduate	44	126	22	66	91	166	40	148	0	2	92	308	19	43	0	0	4	20	312	879	1,191
Non-degree	4	5	1	2	1	0	2	2	0	0	3	11	0	1	0	0	0	0	11	21	32
Total SPH	48	131	23	68	92	166	42	150	0	2	95	319	19	44	0	0	4	20	323	900	1,223
Grand Total UTHealth	277	564	87	366	237	316	230	597	3	6	660	1,264	67	105	4	6	33	86	1,647	3,403	5,051

Headcount Enrollment by Academic Program *Fall 2016*

source: [Robert Jenkins](#), Office of the Registrar CBM001 Certified Enrollment Report to the Texas Higher Education Coordinating Board, October 2016

School/Academic Program	Degree type						Grand Total
	Non-Degree	Certificate	Bachelor	Master	Doctoral	Professional	
School of Biomedical Informatics	0	143	0	123	25	0	291
Applied Health Informatics	0	0	0	11	0	0	11
St Lukes Program	0	20	0	0	0	0	20
Applied Biomedical Informatics	0	50	0	0	0	0	50
Biomedical Informatics	0	53	0	112	25	0	190
El Paso	0	3	0	0	0	0	3
Health Informatics	0	2	0	0	0	0	2
Public Health Informatics	0	15	0	0	0	0	15
School of Dentistry	0	0	0	0	0	405	405
Doctor of Dental Surgery	0	0	0	0	0	405	405
School of Dentistry - Academic	0	50	70	35	0	0	155
Adv Educ General Dentistry	0	6	0	0	0	0	6
Dental Hygiene	0	11	70	0	0	0	81
Endodontics	0	0	0	10	0	0	10
General Practice Dentistry	0	7	0	0	0	0	7
Orthodontics	0	14	0	0	0	0	14
Pediatric Dentistry	0	12	0	0	0	0	12
Periodontics	0	0	0	10	0	0	10
Prosthodontics	0	0	0	15	0	0	15
Graduate School of Biomed Sciences	23	0	0	48	354	0	425
Biochemistry	0	0	0	0	8	0	8
Biochemistrty & Molecular Biology	0	0	0	0	188	0	188
Biostats, Bioinformatics & Systems Bio	0	0	0	0	7	0	7
Biomedical Sciences	0	0	0	25	0	0	25
Biophysics	0	0	0	0	0	0	0
Cancer Biology	0	0	0	0	27	0	27
Cell and Regulatory Biology	0	0	0	0	6	0	6
Concurrent Enrollment	0	0	0	0	0	0	0
Concurrent-Biomedical Engineering	0	0	0	0	0	0	0
Employee	19	0	0	0	0	0	19
Experimental Therapeutics	0	0	0	0	9	0	9
Genes and Development	0	0	0	0	19	0	19
Genetic Counseling	0	0	0	16	0	0	16
Human and Molecular Genetics	0	0	0	0	7	0	7
Immunology	0	0	0	0	11	0	11
Medical Physics	0	0	0	7	35	0	42
Micro and Molecular Genetics	0	0	0	0	13	0	13
Molecular Biology	0	0	0	0	0	0	0
Molecular Carcinogenesis	0	0	0	0	9	0	9
Molecular Pathology	0	0	0	0	0	0	0
Neurosciences	0	0	0	0	15	0	15
Pharmacology	0	0	0	0	0	0	0
Special	4	0	0	0	0	0	4
Virology and Gene Therapy	0	0	0	0	0	0	0
McGovern Medical School	0	0	0	0	0	968	968
Medicine	0	0	0	0	0	968	968
McGovern Medical School - Academic	0	94	0	13	0	0	107
Clinical Research	0	0	0	13	0	0	13
Dentistry	0	0	0	0	0	0	0
Health Informatics	0	1	0	0	0	0	1
Medical Clinical Research	0	0	0	0	0	0	0
Molecular Medicine	0	1	0	0	0	0	1
Post Doctoral	0	91	0	0	0	0	91
Public Health	0	1	0	0	0	0	1

continued **Headcount Enrollment by Academic Program Fall 2016**

School/Academic Program	Degree type						Grand Total
	Non-Degree	Certificate	Bachelor	Master	Doctoral	Professional	
School of Nursing	67	0	596	615	199	0	1,477
Adult/Gero Acute Care Nurse Practitioner	3	0	0	80	0	0	84
Adult/Gero Primary Care Nurse Practitioner	3	0	0	38	0	0	41
Anesthesia	0	0	0	0	71	0	71
Doctor of Nursing Practice	0	0	0	0	30	0	30
Education	3	0	0	22	0	0	25
Emergency/Trauma Concentration	34	0	0	0	0	0	34
Family Nurse Practitioner	11	0	0	396	0	0	407
Informatics	0	0	0	0	11	0	11
Leadership and Administration	0	0	0	48	41	0	89
Nursing	0	0	0	0	46	0	46
PB Nursing	12	0	0	0	0	0	12
Psych Mental Health NP	1	0	0	31	0	0	32
Undergraduate - Pacesetter	0	0	543	0	0	0	543
Undergraduate RN Program	0	0	53	0	0	0	53
School of Public Health	32	105	0	684	402	0	1,223
<i>Austin Total</i>	2	12	0	110	29	0	153
Behavioral Sciences	0	0	0	0	7	0	7
Epidemiology	0	0	0	39	14	0	53
Health Disparities	0	1	0	0	0	0	1
Health Promo/Health Education	0	0	0	38	8	0	46
Public Health	2	11	0	33	0	0	46
<i>Brownsville Total</i>	0	8	0	14	12	0	34
Epidemiology	0	0	0	4	8	0	12
Health Promo/Health Education	0	0	0	2	4	0	6
Public Health	0	8	0	8	0	0	16
<i>Dallas Total</i>	4	10	0	63	11	0	88
Behavioral Sciences	0	0	0	0	3	0	3
Epidemiology	0	0	0	13	7	0	20
Health Disparities	0	10	0	0	0	0	10
Health Promo/Health Education	0	0	0	6	1	0	7
Public Health	4	0	0	44	0	0	48
<i>El Paso Total</i>	1	1	0	26	2	0	30
Health Promo/Health Education	0	0	0	2	2	0	4
MPH El Paso (MD/MPH)	0	0	0	15	0	0	15
Public Health	1	1	0	9	0	0	11
<i>San Antonio Total</i>	2	11	0	76	24	0	113
Community Health Practice	0	0	0	0	15	0	15
Epidemiology	0	0	0	15	4	0	19
Health Disparities	0	1	0	0	0	0	1
Health Promo/Health Education	0	0	0	8	0	0	8
Maternal/Child Health	0	1	0	0	0	0	1
Occ & Env Hlth/Aerospace Medicine	0	0	0	0	5	0	5
Public Health	2	9	0	53	0	0	64
<i>Houston Total</i>	23	48	0	395	324	0	790
Behavioral Sciences	0	0	0	0	23	0	23
Biostatistics	0	0	0	37	64	0	101
Community Health Practice	0	0	0	30	20	0	50
Environmental Sciences	0	0	0	0	18	0	18
Epidemiology	0	0	0	121	73	0	194
Health Disparities	0	3	0	0	0	0	3
Health Promo/Health Education	0	0	0	70	20	0	90
Health Services Organization	0	0	0	21	8	0	29
Healthcare Management	0	0	0	51	0	0	51
Management & Policy Sciences	0	0	0	0	86	0	86
Maternal/Child Hlth-Houston	0	2	0	0	0	0	2
Occ & Env Hlth/Aerospace Med	0	0	0	30	12	0	42
Concurrent - Baylor COM	1	0	0	0	0	0	1
Public Health	22	43	0	35	0	0	100
Online	0	15	0	0	0	0	15
Grand Total UHealth	122	377	666	1,518	980	1,373	5,051

Headcount Enrollment by Residency *Fall 2007 - 2016*

source: [Robert Jenkins](#), Office of the Registrar CBM001 Certified Enrollment Report to the Texas Higher Education Coordinating Board, October 2016

	2007	2008	2009	2010	2011	2012	2013	2014	2015	2016
School of Biomedical Informatics										
Texas Residents	57	5	68	90	109	126	103	141	198	234
Out of State	4	9	8	6	9	5	12	12	15	18
Foreign	19	25	27	24	18	9	12	18	32	39
SBMI Total	80	99	103	120	136	140	127	171	245	291
School of Dentistry										
Texas Residents	427	445	448	449	458	480	491	504	512	516
Out of State	19	21	21	18	18	12	21	22	26	28
Foreign	6	5	5	6	8	11	10	10	10	16
UTSD Total	452	471	474	473	484	503	522	536	548	560
Graduate School of Biomedical Sciences										
Texas Residents	233	245	239	230	224	221	207	188	162	155
Out of State	145	132	149	142	143	120	123	115	124	121
Foreign	200	193	205	214	208	214	183	169	151	149
GSBS Total	578	570	593	586	575	555	513	472	437	425
McGovern Medical School										
Texas Residents	873	897	932	952	918	930	952	926	937	954
Out of State	25	36	43	39	60	69	59	68	77	58
Foreign	37	30	34	34	39	38	51	51	46	63
MMS Total	935	963	1,009	1,025	1,017	1,037	1,062	1,045	1,060	1,075
School of Nursing										
Texas Residents	638	684	703	730	859	928	1,091	1,047	1,222	1,450
Out of State	96	69	36	17	19	24	11	14	13	16
Foreign	19	18	20	18	8	11	14	11	12	11
SON Total	753	771	759	765	886	963	1,116	1,072	1,247	1,477
School of Public Health										
Texas Residents	717	746	753	989	950	880	887	876	875	882
Out of State	72	64	57	124	161	121	112	126	137	116
Foreign	170	193	215	282	314	297	275	258	262	225
SPH Total	959	1,003	1,025	1,395	1,425	1,298	1,274	1,260	1,274	1,223
UTHealth Total										
Texas Residents	2,991	3,101	3,170	3,569	3,587	3,559	3,731	3,682	3,906	4,191
Out of State	334	298	295	348	415	341	338	357	392	357
Foreign	450	466	504	568	598	589	545	517	513	503
Grand Total UTHealth	3,775	3,865	3,969	4,485	4,600	4,489	4,614	4,556	4,811	5,051

Full-time Equivalent (FTE) Student Enrollment *Fall 2007 - 2016*

source: [Robert Jenkins](#), Office of the Registrar

	2007	2008	2009	2010	2011	2012	2013	2014	2015	2016
School of Biomedical Informatics										
	47.96	58.38	62.03	71.72	89.84	94.26	80.18	106.11	140.81	173.00
School of Dentistry										
	431.85	453.17	460.27	461.82	468.10	491.76	506.99	522.83	534.88	545.10
Graduate School of Biomedical Sciences										
	536.86	526.78	547.53	551.22	548.20	525.68	478.69	440.67	408.40	400.49
McGovern Medical School										
	896.60	928.18	966.12	978.88	966.10	989.67	997.80	987.56	1,009.56	1,004.44
School of Nursing										
	648.85	647.65	611.71	760.69	829.40	846.95	965.56	927.25	1,023.89	1,185.18
School of Public Health										
	624.32	690.61	714.83	1,006.81	1,092.00	1,031.54	956.95	938.22	958.03	932.17
Grand Total UTHealth										
	3,186.44	3,304.77	3,362.49	3,831.14	3,993.64	3,979.86	3,986.17	3,922.64	4,075.57	4,240.38

GSBS Students by Institutional Affiliation *Fall 2007 - 2016*

source: [Patricia Bruesch, MPA](#), Graduate School of Biomedical Sciences

¹ Effective Fall 2010, Other includes registered degree seeking students who have not formally chosen an advisor. It does not include non-degree students.

Note: Totals do not match to the Certified CBM001 Enrollment Report due to timing.

	2007	2008	2009	2010	2011	2012	2013	2014	2015	2016
UTHealth										
McGovern Medical School	133	127	139	130	120	104	104	98	84	95
School of Dentistry	2	1	1	0	0	0	0	0	0	0
School of Public Health	2	3	6	7	8	7	7	3	0	0
Subtotal UTHealth	143	141	146	137	128	111	111	101	84	95
UT MD Anderson Cancer Center	306	306	370	330	361	304	293	265	243	222
TAMU Institute of Biosciences and Technology	4	5	5	3	6	5	2	2	1	1
Other ¹	93	96	51	107	77	102	80	74	87	86
Grand Total GSBS	546	548	572	577	572	522	486	442	415	404

Postdoctoral Research Fellows *Fall 2007 - 2016*

source: [Leslie Beckman](#), Office of Postdoctoral Affairs

Fall	Total
2007	125
2008	160
2009	150
2010	161
2011	227
2012	150
2013	158
2014	208
2015	224
2016	239

Licensure Examination Results 2016

sources: [Dana McDowelle, PhD](#), McGovern Medical School; [Phil Pierpont, DDS](#), School of Dentistry; [Diana Pressley, EdD](#), School of Nursing; [Claire Singletary](#), Graduate School of Biomedical Sciences

FY 2016 Dental and Dental Hygiene Board Exams

	Total Examined	Total Passed	Percent Passed
Combined NBDE (DDS National Board Exam) Parts 1 & 2	197	192	98%
DDS WREB (Western Regional Examining Board)	97	90	93%
Dental Hygiene National Board Exam	37	37	100%
Dental Hygiene WREB (Western Regional Examining Board)	37	34	92%

2015-16 Texas State Board of Nursing Examiners Results

	Total Examined	Total Passed	Percent Passed
NCLEX - RN	325	308	94.77%

USMLE Exam (McGovern Medical School)

	Total Examined	Total Passed	Percent Passed
USMLE Step 1	235	229	97%
USMLE Step 2 Clinical Knowledge Exam	247	239	97%
USMLE Step 2 Clinical Skills Exam	234	229	98%
USMLE Step 3 ¹	204	200	98%

¹ Performance of Graduates Taking USMLE Step 3 for the first time – January 2015 to December 2015

2016 American Board of Genetic Counseling Exam Results

	Total Examined	Total Passed	Percent Passed
ABGC (February & August 2016)	9	9	100%

Degrees Conferred by School FY 2010 - 2016

source: [Robert Jenkins](#), Office of the Registrar

CBM009 Certified Graduation Report to the Texas Higher Education Coordinating Board, October 2016

¹beginning in 2015, only Dental Hygiene Certificates are recorded as Certificates. Post Graduate Certificates (PGCRT) are recorded separately.

²in all degree tables, Dental Post Graduate Certificates (PGCRT) totals include Advanced Education-General Dentistry (AEGD) and General Practice Residency (GPR) programs that are not reported to the Coordinating Board.

	FY 2010	FY 2011	FY 2012	FY 2013	FY 2014	FY 2015	FY 2016
School of Biomedical Informatics							
Master's	10	13	35	37	16	28	40
Doctoral	2	5	3	0	3	2	3
Total SBMI	12	18	38	37	19	30	43
School of Dentistry							
Bachelor's	40	33	40	32	37	33	34
Certificate	36	32	24	31	32	4	5
Master's	18	22	20	22	20	26	21
Post Graduate Certificate (PGCRT) *						43	35
Professional	79	81	79	86	82	83	100
Total UTSD	173	168	163	171	171	189	195
Graduate School of Biomedical Sciences							
Master's	42	34	30	36	33	29	20
Doctoral	77	63	74	66	83	76	63
Total GSBS	119	97	104	102	116	105	83
McGovern Medical School							
Master's	3	0	0	0	5	3	4
Professional	221	241	214	234	228	222	239
Total MMS	224	241	214	234	233	225	243
School of Nursing							
Bachelor's	218	306	344	329	422	379	386
Master's	75	79	103	105	137	113	130
Doctoral	10	21	13	17	35	39	26
Total SON	303	406	460	451	594	531	542
School of Public Health							
Master's	171	306	392	330	288	269	320
Doctoral	36	37	45	55	75	61	63
Total SPH	207	343	437	385	363	330	383
UTHealth							
Bachelor's	258	339	384	361	459	412	420
Certificate	36	32	24	31	32	4	5
Master's	319	454	580	530	499	468	535
Doctoral	125	126	135	138	196	178	155
Post Graduate Certificate (PGCRT)	0	0	0	0	0	43	35
Professional	300	322	293	320	310	305	339
Grand Total UTHealth	1,038	1,273	1,416	1,380	1,496	1,410	1,489

This page is intentionally blank

Degrees Conferred by Academic Program FY 2016

source: [Robert Jenkins](#), Office of the Registrar CBM009 Certified Graduation Report to the Texas Higher Education Coordinating Board, October 2016

School	Degree											Grand Total
	CRT	BSN	DDS	DNP	DrPH	MD	MPH	MS	MSN	PGCRT	PhD	
School of Biomedical Informatics												
Applied Health Informatics								15				15
Biomedical Informatics								25			3	28
Total SBMI	0	0	0	0	0	0	0	40	0	0	3	43
Schol of Dentistry												
Advanced General Dentistry										7		7
Dental Hygiene	5											39
Doctor of Dental Surgery			100									100
Endodontics								5		5		10
Oral and Maxillofacial Surgery										6		6
Orthodontics								7		7		14
Pediatric Dentistry								4		5		9
Periodontics								2		2		4
Prosthodontics								3		3		6
Total UTSD	5	0	100	0	0	0	0	21	0	35	0	195
Graduate School of Biomedical Sciences												
Biochemistry											2	2
Biostats, Bioinform & Sys Bio											2	2
Biomedical Sciences								9			6	15
Cancer Biology											14	14
Cell and Regulatory Biology												0
Cell Biology												0
Experimental Therapeutics								1			9	10
Genes and Development											7	7
Genetic Counseling								8				8
Human and Molecular Genetics												0
Immunology											4	4
Integrative Biology												0
Medical Physics								2			7	9
Micro and Molecular Genetics											4	4
Molecular Carcinogenesis											5	5
Molecular Pathology												0
Neurosciences											3	3
Virology and Gene Therapy												0
Total GSBS	0	0	0	0	0	0	0	20	0	0	63	83
McGovern Medical School												
Clinical Research								4				4
Medicine						239						239
Total MMS	0	0	0	0	0	239	0	4	0	0	0	243

continued **Degrees Conferred by Academic Program FY 2016**

School	Degree												Grand Total
	BS	CRT	BSN	DDS	DNP	DrPH	MD	MPH	MS	MSN	PGCRT	PhD	
School of Nursing													
Adult Gero Acute Care NP										15			15
Adult/Gerontology Primary Care NP										14			14
Doctor of Nursing Practice					5								5
Education										2			2
Family Nurse Practitioner										81			81
Nursing												11	11
Gerontology Nurse Practitioner													0
Leadership and Administration					5					3			8
Nurse Anesthesia					5					15			20
Pediatric Nurse Practitioner													0
Psyc Mental Health Nurse Pract													0
Undergraduate - Accelerated													0
Undergraduate - Pacesetter			316										316
Undergraduate RN Program			70										70
Womens Health Educatn Speclst													0
Womens Health Nurse Practnr													0
Total SON	0	0	386	0	15	0	0	0	0	130	0	11	542
School of Public Health													
Austin						6		55				3	64
Behavioral Sciences												3	3
Biological Sciences													0
Biostatistics								4	8			14	26
Brownsville								4					4
Community Health Practice						8		16					24
Dallas								16					16
Dallas Health Disparities													0
Dallas Maternal & Child Health													0
El Paso								3					3
Environmental Sciences												2	2
Epidemiology								49	6			10	65
Health Promo/Health Education						7		36					43
Health Services Organization								7					7
Healthcare Management								25					25
International & Family Health													0
Management & Policy Sciences												8	8
MDMED													0
MPH El Paso (MD/MPH)								6					6
MPH Houston								20					20
Occ & Env Hlth/Aerospace Med								24					24
San Antonio Prog - Accelerated								1					1
San Antonio Program								39	1			2	42
Total SPH	0	0	0	0	0	21	0	305	15	0	0	42	383
Grand Total UTHealth	34	5	386	100	15	21	239	305	100	130	35	119	1,489

Degrees Conferred by Level & Race/Ethnicity FY 2016

source: [Robert Jenkins](#), Office of the Registrar

CBM009 Certified Graduation Report to the Texas Higher Education Coordinating Board, October 2016

School	Race/Ethnicity									Grand Total
	American Indian	Asian	Black	Inter-national	Hispanic	Multi-Racial	Pacific Islander	Uniden-tified	White	
School of Biomedical Informatics										
MS	0	6	10	5	5	0	0	1	16	40
PhD	0	0	0	0	0	0	0	0		3
Total SBMI	0	6	10	5	5	0	0	1	16	43
School of Dentistry										
BS	0	6	1	1	10	1	1	0	14	34
Undergrad Certificate	0	0	0	1	2	1	0	0	2	5
DDS	0	18	5	2	21	5	0	3	46	100
MS	0	2	1	4	2	0	0	0	12	21
Postgraduate Certificate	0	3	1	4	2	0	0	0	17	35
Total UTSD	0	29	8	12	37	7	1	3	91	195
Graduate School of Biomedical Sciences										
MS	0	6	0	2	0	0	0	1	11	20
PhD	0	4	1	31	9	0	0	1	17	63
Total GSBS	0	10	1	33	9	0	0	2	28	83
McGovern Medicine School										
MS	0	0	0	0	1	0	0	0	3	4
MD	0	43	13	0	36	2	0	13	132	239
Total MMS	0	43	13	0	37	2	0	13	135	243
School of Nursing										
BSN	1	61	45	4	98	12	3	7	155	386
MSN	1	23	18	5	14	5	0	1	63	130
DNP	1	3	1	1	2	0	0	0	7	15
PhD	0	1	2	2	1	0	0	0	5	11
Total SON	3	88	66	12	115	17	3	8	230	542
School of Public Health										
MPH	0	36	36	38	44	8	0	22	120	304
MS	0	4	1	7	0	0	0	2	2	16
DrPH	0	1	2	4	2	0	0	0	12	21
PhD	0	5	0	20	2	0	0	4	11	42
Total SPH	0	46	39	69	48	8	0	28	145	383
Grand Total UTHealth	3	222	137	131	251	34	4	55	645	1,489

Profile of Medical Residents in ACGME Accredited Programs as of September 2016

source: [April Bass](#), McGovern Medical School

Specialty	Male	Female	White	Black	Pacific Islander	Asian	American Indian	Multi- Racial	Other	Total
Adolescent Medicine	0	0	0	0	0	0	0	0	0	0
Adult Cardiothoracic Anesthesiology	4	0	4	0	0	0	0	0	0	4
Anesthesiology	49	41	50	11	0	25	0	4	0	90
Cardiovascular Disease	17	11	11	1	0	15	0	1	0	28
Child & Adolescent Psychiatry	2	4	2	0	0	3	1	0	0	6
Child Abuse Pediatrics	0	2	1	0	0	1	0	0	0	2
Child Neurology	4	4	4	0	0	4	0	0	0	8
Clinical Cardiac Electrophysiology	1	0	0	1	0	0	0	0	0	1
Clinical Neurophysiology	0	4	2	2	0	0	0	0	0	4
Colon and Rectal Surgery	4	0	1	0	0	2	0	1	0	4
Combined Adult & Pediatric Nephrology	1	1	2	0	0	0	0	0	0	2
Critical Care Anesthesia	1	2	2	1	0	0	0	0	0	3
Dermatology	5	16	12	0	0	7	0	0	2	21
Dermatopathology	1	0	1	0	0	0	0	0	0	1
Diagnostic Radiology	38	15	28	4	0	19	0	1	1	53
Emergency Medical Services	0	2	1	0	0	1	0	0	0	2
Emergency Medicine	37	17	41	0	0	11	0	2	0	54
Endocrinology, Diabetes & Metabolism	1	3	3	0	0	1	0	0	0	4
Family Practice	20	16	12	6	0	16	0	2	0	36
Gastroenterology	6	4	2	0	0	8	0	0	0	10
General Surgery	45	15	45	1	0	10	2	2	0	60
Geriatric Medicine (IMG)	0	2	0	1	0	1	0	0	0	2
Hospice & Palliative Medicine	0	3	2	1	0	0	0	0	0	3
Infectious Diseases	6	5	7	0	0	4	0	0	0	11
Internal Medicine	70	72	55	7	0	77	1	2	0	142
Internal Medicine - RP	2	0	2	0	0	0	0	0	0	2
Internal Medicine/Pediatrics	15	11	14	2	0	9	0	1	0	26
Interventional Cardiology	3	0	3	0	0	0	0	0	0	3
Medical Genetics	0	0	0	0	0	0	0	0	0	0
Neonatal Perinatal Medicine	2	9	8	1	0	2	0	0	0	11
Nephrology	4	5	2	2	0	5	0	0	0	9
Neurological Surgery	15	1	13	1	0	2	0	0	0	16
Neurology	17	10	13	2	0	10	2	0	0	27
Neuroradiology	4	0	3	0	0	1	0	0	0	4
Obstetrics & Gynecology - LBJ Hospital	3	20	13	6	0	3	0	1	0	23
Obstetrics & Gynecology - Memorial Hermann	4	22	17	3	0	6	0	0	0	26
Occupational Medicine	3	0	2	0	0	0	0	1	0	3
Ophthalmology	5	7	9	1	0	2	0	0	0	12
Orthopaedic Sports Medicine	3	0	2	1	0	0	0	0	0	3
Orthopaedic Surgery	23	1	21	0	0	2	0	1	0	24
Otolaryngology	7	3	6	0	0	4	0	0	0	10
Pathology	8	17	13	2	0	10	0	0	0	25
Pediatric Anesthesiology	1	1	2	0	0	0	0	0	0	2
Pediatric Cardiology	1	7	1	1	0	6	0	0	0	8
Pediatric Critical Care Medicine	5	1	4	0	0	2	0	0	0	6
Pediatric Emergency Medicine	0	3	1	0	0	2	0	0	0	3
Pediatric Endocrinology	2	1	1	0	0	1	1	0	0	3
Pediatric Gastroenterology	2	4	3	0	0	3	0	0	0	6
Pediatric Infectious Diseases	0	2	1	0	0	0	0	1	0	2
Pediatric Nephrology	0	0	0	0	0	0	0	0	0	0
Pediatric Pulmonology	1	1	2	0	0	0	0	0	0	2
Pediatric Surgery	0	1	1	0	0	0	0	0	0	1
Pediatrics	17	60	31	1	0	27	0	0	18	77
Pediatrics/Medical Genetics	2	2	3	0	0	1	0	0	0	4
Physical Medicine & Rehabilitation	9	2	8	0	0	3	0	0	0	11
Physical Medicine & Rehabilitation - CIP	0	0	0	0	0	0	0	0	0	0
Plastic & Reconstructive Surgery	5	1	4	0	0	2	0	0	0	6
Psychiatry	22	21	20	1	0	21	1	0	0	43
Pulmonary Disease & Critical Care Medicine	12	6	7	0	0	10	0	1	0	18
Rheumatology	2	4	4	0	0	2	0	0	0	6
Sleep Medicine	0	2	1	0	0	1	0	0	0	2
Spinal Cord Injury Medicine	1	1	1	0	0	1	0	0	0	2
Surgical Critical Care	3	0	3	0	0	0	0	0	0	3
Urology	7	6	10	1	0	2	0	0	0	13
Vascular Neurology	2	5	1	0	0	6	0	0	0	7
Vascular Surgery	2	0	1	1	0	0	0	0	0	2
Vascular Surgery - Integrated	3	0	3	0	0	0	0	0	0	3
Grand Total UTHealth	529	476	542	62	0	351	8	21	21	1,005

McGovern Medical School Graduating Class Specialty Choices *May 2016*

source: [Dana McDowelle, PhD](#), McGovern Medical School

Note: Gray shading represents Primary Care fields, of which 37.1% (88) of the 237 graduates selected.

Specialty	Number	Percentage
Internal Medicine	36	15.19%
Anesthesiology	24	10.13%
Pediatrics	19	8.02%
Emergency Medicine	14	5.91%
Family Medicine	14	5.91%
Psychiatry	14	5.91%
Surgery-Preliminary	12	5.06%
Orthopaedic Surgery	10	4.22%
Pediatric Neurology	9	3.80%
Surgery (General)	8	3.38%
Int. Medicine-Pediatrics	8	3.38%
Obstetrics-Gynecology	8	3.38%
Diagnostic Radiology	7	2.95%
Ophthalmology	6	2.53%
Otolaryngology	6	2.53%
Deferred	5	2.11%
Dermatology	5	2.11%
Neurology	4	1.69%
Radiation Oncology	4	1.69%
Urology	4	1.69%
Internal Medicine-Preliminary	3	1.27%
Oral & Maxillofacial Surgery	3	1.27%
Pathology	3	1.27%
Neurological Surgery	2	0.84%
Physical Med & Rehab	2	0.84%
Psychiatry-Child Psychiatry	2	0.84%
Internal Medicine-Psychiatry	1	0.42%
Pediatrics-Child Psychiatry	1	0.42%
Plastic Surgery	1	0.42%
Transitional	1	0.42%
Vascular Surgery	1	0.42%
Grand Total	237	

School of Dentistry Residents & Postgraduate Students *Fall 2016*

source: [Phil Pierpont, DDS](#), School of Dentistry

Specialty	Gender			White	Black	Hispanic	Asian	American Indian	Other
	Total	M	F						
Endodontics	10	9	1	4	1	1	0	0	4
General Dentistry (GPR)	7	3	4	1	2	1	3	0	0
General Dentistry (AEGD)	7	5	2	3	0	1	0	0	3
Oral & Maxillofacial Surgery	30	25	5	15	1	2	8	0	4
Orthodontics & Dentofacial Orthopedics	14	7	7	12	0	1	0	0	1
Pediatric Dentistry	12	1	11	3	0	0	6	1	2
Periodontics	10	4	6	7	0	0	3	0	0
Prosthodontics	15	9	6	3	0	5	3	0	4
Total	105	63	42	48	4	11	23	1	18

The UTHealth Advanced Education Programs of the School of Dentistry is composed of three types of students: postgraduate, graduate, and resident.

- A postgraduate student is a dentist registering and paying tuition and fees for courses leading to a certificate in the specialty area.
- A graduate student is a dentist registering and paying tuition and fees for courses leading to a Master of Science degree and a certificate in a dental specialty area.
- A resident is a dentist who receives training in a specialty area, is paid a stipend, and who receives a certificate of completion.
- Residencies are available only in oral and maxillofacial surgery.

Medical (MCAT) and Dental (DAT) Applicant Scores *Fall 2016 Entering Class*

sources: [Phil Pierpont, DDS](#), School of Dentistry; [Dana McDowelle, PhD](#), McGovern Medical School

Applicant Average Medical College Admission Test (MCAT) Scores Fall 2016 Entering Class

Subject	All Applicants	Enrolled Applicants
Biological Sciences	9.7	10.9
Physical Science	9.3	10.5
Verbal Reasoning	8.9	9.6
Applicant Average	27.87	31
Applicant Average Overall GPA	3.56	3.78

Medical College Admission Test (MCAT) New Format Fall 2016 Entering Class

	All Applicants	Enrolled Applicants
Chemical and Physical Foundations of Biological Systems (CPBS)	125.4	127.3
Critical Analysis and Reasoning Skills (CARS)	125.1	126.8
Biological and Biochemical Foundations of Living Systems (BBFL)	125.5	127.4
Psychological, Social, and Biological Foundations of Behavior (PSBB)	125.6	127.7
Applicant Average	500	509
Applicant Average Overall GPA	3.56	3.78

Applicant Average Dental Aptitude Test (DAT) Scores Fall 2016 Entering Class

Subject	All Applicants	Enrolled Applicants
Academic Average AA	19.1	20.4
Perception Ability MA	19.4	20.0
Quantitative Reasoning	18.1	19.2
Reading Comprehension	20.4	21.0
Biology	18.9	20.1
Inorganic Chemistry	19.2	20.7
Organic Chemistry	19.1	20.9
Total Science	18.9	20.2
Applicant Average Overall GPA	3.38	3.74

Tuition & Fees Fall 2016 & Spring 2017

source: [Sue Langgard](#), Bursar's Office

Level	Resident	Non-Resident
Undergraduate - Nursing		
Tuition (30 semester credit hours)	\$5,800.00	\$25,890.00
<i>Fees</i>		
Student Service Fees per semester	205.70	205.70
Info Technology Access Fee/semester	33.00	33.00
Liability Insurance /semester	5.25	5.25
Nursing Achievement Exam BSN/semester	200.00	200.00
Nursing Achievement Exam RN-BSN/semester	120.00	120.00
Nursing Supplemental Course Fee/as required by course	30.00	30.00
Lab fee per class/as required by course	30.00	30.00
Clinical Placement Fee RN-BSN & BSN/semester	145.00	145.00
Simulation Fee/semester	175.00	175.00
Student Records fee/semester	140.00	140.00
Nursing Technology Resource Fee/semester	5.00	5.00
Nursing Portfolio Fee	50.00	50.00
Total Undergraduate (BSN)	\$6,938.95	\$27,028.95
Undergraduate - Dental Hygiene		
Tuition (30 semester credit hours)	\$4,080.00	\$16,320.00
<i>Fees</i>		
Student Service Fees per semester	205.70	205.70
Info Technology Access Fee/semester	33.00	33.00
Alternative Instruction Delivery Fee		
Web courses delivered with Texas/ credit hr	75.00	-
Web courses delivered out of state/ credit hr	-	520.00
Technology Resource Fee	495.00	495.00
Dental Hygiene Supplemental Course Fee- DHCT 2103, DHCT 3303, DHBS 3101, DHBS 4303/ course	20.00	20.00
Instrument Sterilization Fee	900.00	900.00
Laboratory Fee	20.00	20.00
Liability Insurance /semester	5.25	5.25
Student Records fee/semester	5.00	5.00
Library Resource Fee	150.00	150.00
Total Undergraduate (BDH)	\$5,988.95	\$18,673.95
Graduate - Biomedical Informatics		
Tuition (24 semester credit hours)	\$5,904.00	\$18,096.00
<i>Fees²</i>		
Student Service Fees per semester	205.70	205.70
Alternative Instruction Delivery Fee		
Web courses delivered with TX/ credit hr	100.00	-
Info Technology Access Fee/semester	33.00	33.00
Computer Resource Fee	100.00	100.00
Practicum Health Informatics Course Fee HI 6000 (\$500/credit hr max \$1500)	1,500.00	1,500.00
Student Records fee/semester	5.00	5.00
Technology Fee (Spring & Fall semester)	100.00	100.00
Liability Insurance /semester	5.25	5.25
Total Graduate - SBMI	\$7,952.95	\$20,044.95
Graduate - Clinical Research		
Tuition (24 semester credit hours)	\$2,304.00	\$12,096.00
<i>Fees</i>		
Student Service Fees per semester	205.70	205.70
Student Records fee/semester	5.00	5.00
Info Technology Access Fee/semester	33.00	33.00
Total Graduate - MS in Clinical Research	\$2,547.70	\$12,339.70

continued **Tuition & Fees Fall 2016 & Spring 2017**

Level	Resident	Non-Resident
Graduate - Public Health		
Tuition (24 semester credit hours)	\$5,352.00	\$22,368.00
<i>Fees²</i>		
Student Service Fees per semester	205.70	205.70
SPH Library Resource Fee	60.00	60.00
Supplemental Fee - MPHACC San Antonio	4,000.00	4,000.00
Liability Insurance /semester	5.25	5.25
Alternative Instruction Delivery Fee		
SPH web courses delivered with TX/ credit hr	35.00	-
SPH web courses delivered out of state/ credit hr	-	750.00
Computer Resource Fee	62.00	62.00
Service Exam Fee/ semester, web based class	50.00	50.00
Dietetic Internship Fee (spring only) Class PH 9997	2,250.00	2,250.00
Info Technology Access Fee/semester	33.00	33.00
Student Records fee/semester	5.00	5.00
Archer Program Fee (Summer Only)	3,900.00	3,900.00
Total Graduate - SPH	\$15,957.95	\$33,688.95
Graduate - Dental Advanced Ed		
Tuition (24 semester credit hours)	\$3,456.00	\$13,248.00
<i>Fees</i>		
Student Service Fees per semester	205.70	205.70
Info Technology Access Fee/semester	33.00	33.00
Instrument Sterilization Fee ⁴	2,500.00	2,500.00
Liability Insurance (average)		
Endo, Ortho, Prostho/ year	675.00	675.00
AEGD, GPR, Pedo, Perio/ year	935.00	935.00
Library Resource Fee	150.00	150.00
Course fee- DBPG 1101	500.00	500.00
Student Records fee/semester	5.00	5.00
Advanced Education Program Fee (Semester Endo, GPR, Pedi)	500.00	500.00
Technology Resource Fee (Semester)	496.67	496.67
Total Graduate - Dental Adv Ed	\$9,456.37	\$19,248.37
Graduate - Nursing		
Tuition (24 semester credit hours)	\$6,144.00	\$24,240.00
<i>Fees²</i>		
Student Service Fees per semester	205.70	205.70
Info Technology Access Fee/semester	33.00	33.00
Alternative Instruction Delivery Fee		
SON for web courses delivered out of state/ credit hr	-	765.00
SON for web courses delivered in state/ credit hr	80.00	-
Liability Insurance /semester	5.25	5.25
Nurse Practitioner/semester	23.00	23.00
Simulation Fee as required by course	175.00	175.00
Nursing Portfolio Fee	50.00	50.00
Clinical Placement Fee as required by course	145.00	145.00
Nursing Technology Resource Fee	140.00	140.00
Student Records fee/semester	5.00	5.00
Lab Fee per class if required	30.00	30.00
Total Graduate - SON	\$7,035.95	\$25,816.95
Graduate - Biomedical Sciences		
Tuition (24 semester credit hours)	\$4,368.00	\$13,104.00
<i>Fees</i>		
Student Service Fees per semester	205.70	205.70
Info Technology Access Fee/semester	33.00	33.00
Student Records fee/semester	5.00	5.00
Liability Insurance /semester ³	5.25	5.25
Total Graduate - GSBS	\$4,616.95	\$13,352.95

continued **Tuition & Fees** Fall 2016 & Spring 2017

Level	Resident	Non-Resident
Professional - Medical (MD)		
Tuition	\$15,525.00	\$26,125.00
<i>Fees¹</i>		
Student Service Fees	532.65	532.65
Malpractice Insurance	25.00	25.00
Information Technology Fee	99.00	99.00
Computer Resource Fee	200.00	200.00
Technology Fee	700.00	700.00
Library Fee	100.00	100.00
Student Records Fee	15.00	15.00
Standardized Patient Fee	1,000.00	1,000.00
Total MD	\$18,196.65	\$28,796.65
Professional - Dental (DDS)		
Tuition	\$25,382.00	\$36,974.00
<i>Fees¹</i>		
Student Service Fees	532.65	532.65
Instrument Kit Rental Fee (average)	2,500.00	2,500.00
Liability Insurance	25.00	25.00
ASDA Student Activity Fee	140.00	140.00
Information Technology Access Fee	99.00	99.00
Library Fee	150.00	150.00
Student Records Fee	15.00	15.00
Technology Resource Fee	1,190.00	1,190.00
Total DDS	\$30,033.65	\$41,625.65

¹ Add'l fees are assessed per program year (gross anatomy, lab, pager)

² Add'l alternative instruction delivery fees are assessed for web courses

³ Fee assessed only to Genetic Counseling students

⁴ Fee assessed only to Prostho, Perio, OMFS, and Endo students

Note: All students pay a mandatory graduation fee (\$75) when applicable

Student Financial Aid Profile FY 2009 - 2016

source: [Araceli Alvarez](#), Office of Student Financial Services

	2009	2010	2011	2012	2013	2014	2015	2016
Federal Grant Awards								
FPLP – Perkins ^a	\$0	\$0	\$0	\$0	\$0	\$0	\$0	\$0
HPSLP – Dental	0	95,980	18,849	29,741	0	0	0	18,520
HPSLP – Medical	0	0	0	0	0	0	0	0
Nursing SLP – undergraduate	0	0	0	0	0	0	0	0
Nursing SLP – graduate	0	0	0	0	0	0	0	0
NFLP	0	0	92,265	15,759	95,810	5,900	25,757	28,242
LDS – Dental	0	8,100	7,980	3,612	1,000	0	0	0
LDS – Medical	340,207	0	0	0	30,918	0	0	0
Federal Grant Total	\$340,207	\$104,080	\$119,094	\$49,112	\$127,728	\$5,900	\$25,757	\$46,762
Institutional Matching								
FPLP – Perkins ^a	\$0	\$0	\$0	\$0	\$0	\$0	\$0	\$0
HPSLP – Dental	0	10,664	2,094	3,305	0	0	0	2,058
HPSLP – Medical	0	0	0	0	0	0	0	0
Nursing SLP – undergraduate	0	0	0	0	0	0	0	0
Nursing SLP – graduate	0	0	0	0	0	0	0	0
NFLP	0	0	10,252	1,751	10,646	656	2,862	3,138
LDS – Dental	0	900	887	401	111	0	0	0
LDS – Medical	37,801	0	0	0	3,435	0	0	0
Institutional Matching Total	\$37,801	\$11,564	\$13,233	\$5,457	\$14,192	\$656	\$2,862	\$5,196
Collections^b								
FPLP – Perkins ^a	\$553,637	\$709,817	\$656,802	\$643,881	\$679,865	\$761,183	\$847,783	\$761,850
HPSLP – Dental	240,231	415,936	746,881	623,481	557,102	567,391	439,707	874,297
HPSLP – Medical	91,739	75,979	55,027	65,472	49,998	54,452	20,502	15,289
Nursing SLP - UG	505	5,729	2,483	5,693	1,421	806	244	4,083
Nursing SLP – GR	17,095	14,989	22,530	19,336	22,316	39,476	20,618	16,993
LDS - Dental	30,036	47,383	87,815	58,989	68,883	36,058	36,069	94,663
LDS - Medical	12,105	42,984	71,976	86,087	89,241	121,809	165,798	163,342
NFLP	6,850	9,425	7,885	4,758	6,692	7,994	18,959	23,394
Collections Total	\$952,198	\$1,322,242	\$1,651,399	\$1,507,697	\$1,475,518	\$1,589,169	\$1,549,680	\$1,953,911
Total Available in Federal Loan Funds	\$1,330,206	\$1,437,886	\$1,783,726	\$1,562,266	\$1,617,438	\$1,595,725	\$1,578,299	\$2,005,869
Default Rates^c								
FPLP – Perkins ^a	1.97%	2.64%	5.26%	1.16%	5.13%	1.37%	0.88%	0.00%
HPSLP – Dental	0.56%	0.51%	0.45%	0.42%	0.40%	0.39%	0.52%	0.49%
HPSLP – Medical	0.47%	0.59%	1.30%	0.91%	0.73%	1.45%	0.40%	0.16%
Nursing SLP – undergraduate	3.63%	3.70%	3.57%	3.10%	2.84%	2.85%	2.85%	2.84%
Nursing SLP – graduate	0.00%	1.59%	1.42%	2.24%	2.74%	2.17%	1.95%	0.92%
LDS - Dental	2.39%	0.99%	2.31%	0.53%	2.33%	0.49%	0.45%	0.40%
LDS - Medical	0.65%	0.57%	0.55%	2.76%	0.52%	3.39%	2.97%	2.38%
NFLP	10.18%	0.00%	10.18%	10.18%	10.18%	2.57%	2.39%	9.83%

Legend

FPLP - Federal Perkins Loan Program
HPSLP – Health Professions Student Loan Program
LDS – Loans for Disadvantaged Students
SLP - Student Loan Program
UG - Undergraduate
GR - Graduate
NFLP – Nursing Faculty Loan Program

^a On June 30, 1993, the Department of Education initiated a new default rate calculation for the Perkins Loan Program. The new default rate calculation, called the Cohort Default Rate, looks at borrowers entering repayment in a specific one year period. As of June 30, 2016, the Cohort Default Rate for the Perkins Loan Program was 0.88%, for the Year Ending June 30, 2016

^b Principal, interest, investment income and late fees.

^c As of June 30, 2016 overall default rates.

Total Student Financial Aid Awards by School FY 2008 - 2016

source: [Araceli Alvarez](#), Office of Student Financial Services

	FY 2008		FY 2009		FY 2010	
	#	Award	#	Award	#	Award
School of Biomedical Informatics	6	\$123,799	5	\$89,500	10	\$156,642
School of Dentistry	356	12,827,737	372	13,941,438	398	15,487,789
Graduate School of Biomedical Sciences	101	2,351,961	106	2,164,704	106	2,189,994
McGovern Medical School	715	24,247,384	726	25,242,011	795	27,426,174
School of Nursing	372	6,322,372	409	6,538,160	519	8,339,203
School of Public Health	210	4,016,634	187	3,429,697	324	5,902,227
Grand Total UTHealth	1,760	\$49,889,887	1,805	\$51,405,510	2,152	\$59,502,029

	FY 2011		FY 2012		FY 2013	
	#	Award	#	Award	#	Award
School of Biomedical Informatics	10	\$141,322	25	\$457,128	39	\$623,748
School of Dentistry	390	15,401,183	395	15,799,388	405	15,110,257
Graduate School of Biomedical Sciences	86	1,705,729	134	2,005,976	109	1,703,816
McGovern Medical School	802	28,342,873	784	29,223,254	734	28,400,524
School of Nursing	599	9,743,509	669	11,003,580	753	13,873,569
School of Public Health	574	10,369,765	596	11,212,787	461	9,280,482
Grand Total UTHealth	2,461	\$65,704,381	2,603	\$69,702,113	2,501	\$68,992,396

	FY 2014		FY 2015		FY 2016	
	#	Award	#	Award	#	Award
School of Biomedical Informatics	55	\$419,406	66	\$805,290	71	\$694,693
School of Dentistry	393	15,392,622	395	15,915,038	424	18,436,165
Graduate School of Biomedical Sciences	100	1,208,947	95	1,084,073	90	903,085
McGovern Medical School	702	24,272,613	657	24,144,860	684	25,229,960
School of Nursing	841	13,003,621	848	13,108,331	920	15,630,981
School of Public Health	462	6,426,508	496	6,770,923	492	6,872,444
Grand Total UTHealth	2,553	\$60,723,717	2,557	\$61,828,515	2,681	\$67,767,328

Total Student Financial Aid Awards by Major Program FY 2007 - 2016

source: [Araceli Alvarez](#), Office of Student Financial Services

	2007	2008	2009	2010	2011
LDS – Dental	\$12,000	\$94,509	\$0	\$9,000	\$45,000
LDS – Medical	243,273	285,454	378,008	9000	107,248
FPLP – Perkins	446,785	1,704,479	246,600	390,229	735,572
HPSLP – Dental	1,188,000	1,150,913	0	106,644	305,400
HPSLP – Medical	0	0	0	0	0
Nursing SLP – Undergraduate	0	0	0	0	0
Nursing SLP – Graduate	25,000	28,500	24,000	35,178	24,800
Nurse Faculty Loan Program	0	0	0	0	29,930
Health Education Loan Program	0	0	0	17,583	0
Direct Loans - Subsidized	11,776,797	11,830,422	12,011,944	14,227,458	16,568,772
Direct Loans - Unsubsidized	27,603,765	26,803,001	31,107,177	36,045,586	39,299,115
Institutional and other loans and scholarships	5,668,697	7,992,610	7,637,781	8,661,351	8,588,544
Grand Total UTHealth	\$46,964,317	\$49,889,888	\$51,405,510	\$59,502,029	\$65,704,381

	2012	2013	2014	2015	2016
LDS – Dental	\$68,371	\$60,000	\$73,608	\$50,000	\$40,000
LDS – Medical	0	107,307	47,532	131,896	118,126
FPLP – Perkins	784,003	848,250	657,299	594,000	517,687
HPSLP – Dental	426,772	802,782	949,719	489,747	420,000
HPSLP – Medical	0	0	0	0	0
Nursing SLP – Undergraduate	0	0	0	0	0
Nursing SLP – Graduate	27,000	6,000	0	3,000	16,500
Nurse Faculty Loan Program	72,252	79,173	61,711	47,685	52,129
Health Education Loan Program	0	0	0	0	0
Direct Loans - Subsidized ¹	17,223,896	5,762,589	2,621,502	2,603,964	2,480,313
Direct Loans - Unsubsidized ¹	41,622,872	51,602,107	45,351,965	46,868,563	48,893,411
Institutional and other loans and scholarships	9,476,947	9,724,188	10,960,381	11,039,660	15,229,162
Grand Total UTHealth	\$69,702,113	\$68,992,396	\$60,723,717	\$61,828,515	\$67,767,328

¹ Due to a Student Information System change, if a student accepts a lesser award amount than the original maximum award offered, the offer amount is automatically superseded by the lower accepted amount. In previous years, the original maximum award offered was reported. As a result, the Direct Loan award amounts reported for the 2013-14 academic year are significantly lower than those reported in the previous year.

Average Student Financial Aid Awards by School *FY 2007 - 2016*

source: [Araceli Alvarez](#), Office of Student Financial Services

Note: this is the average of those students receiving aid.

	2007	2008	2009	2010	2011
School of Biomedical Informatics	\$13,833	\$20,633	\$17,900	\$15,664	\$14,132
School of Dentistry	34,327	36,033	37,477	38,914	39,490
Graduate School of Biomedical Sciences	17,971	23,287	20,422	20,660	19,834
McGovern Medical School	34,167	33,912	34,769	34,498	35,340
School of Nursing	14,969	16,996	15,986	16,068	16,266
School of Public Health	17,130	19,127	18,341	18,217	18,066
Combined Average	\$22,467	\$27,053	\$28,480	\$27,650	\$26,698

	2012	2013	2014	2015	2016
School of Biomedical Informatics	\$18,285	\$15,994	\$7,626	\$12,201	\$9,784
School of Dentistry	39,998	37,309	39,167	40,291	43,482
Graduate School of Biomedical Sciences	14,970	15,631	12,089	11,411	10,034
McGovern Medical School	37,275	38,693	34,576	36,750	36,886
School of Nursing	16,448	18,424	15,462	15,458	16,990
School of Public Health	18,813	20,131	13,910	13,651	13,968
Combined Average	\$26,778	\$27,586	\$23,785	\$24,180	\$25,277

Average Student Debt on Graduation *FY 2009 - 2016*

source: [Araceli Alvarez](#), Office of Student Financial Services

Note: this is the average of those students receiving aid.

	2009	2010	2011	2012
School of Biomedical Informatics	\$67,519	\$35,442	\$34,125	\$37,383
School of Dentistry (DDS)	129,571	141,294	137,040	131,766
School of Dentistry - Dental Hygiene	27,690	34,067	27,864	29,509
School of Dentistry - Dental Post Grad	61,303	92,666	99,590	107,450
Graduate School of Biomedical Sciences	47,380	52,198	73,803	45,649
McGovern Medical School (MD)	115,796	116,409	112,746	107,936
McGovern Medical School - Clinical Research	-	-	-	-
School of Nursing - Undergraduate	18,918	22,438	18,504	20,670
School of Nursing - Graduate	44,051	52,334	45,133	47,629
School of Public Health	40,731	53,932	43,347	37,167
	2013	2014	2015	2016
School of Biomedical Informatics	\$24,739	\$20,488	\$46,669	\$34,151
School of Dentistry (DDS)	145,423	138,689	151,335	157,066
School of Dentistry - Dental Hygiene	24,203	27,127	26,950	32,678
School of Dentistry - Dental Post Grad	56,290	67,370	62,539	59,801
Graduate School of Biomedical Sciences	31,535	43,166	48,156	37,589
McGovern Medical School (MD)	113,576	115,942	117,381	115,372
McGovern Medical School - Clinical Research	-	-	-	-
School of Nursing - Undergraduate	20,014	18,076	20,060	22,232
School of Nursing - Graduate	43,641	47,495	43,245	38,123
School of Public Health	37,829	35,881	37,950	34,608

Total Graduates by School

source: [Robert Jenkins](#), Office of the Registrar

School of Biomedical Informatics <i>2010 - present</i>	193
School of Dentistry <i>1943 - present</i>	11,172
Graduate School of Biomedical Sciences <i>1963 - present</i>	2,719
McGovern Medical School <i>1970 - present</i>	7,422
School of Nursing <i>1972 - present</i>	10,709
School of Public Health <i>1967 - present</i>	7,680
School of Allied Health Sciences <i>1973 - 1996</i>	2,019
School of Health Information Sciences <i>1998 - 2009</i>	134
Grand Total UHealth (all degrees, all years)	42,048

This page is intentionally blank

Research

Research Expenditures by Unit	59
UT Health-Related Institutions Research Expenditures by Source	60
Trends in UT Health-Related Institutions Research Expenditures	60
Research Expenditures by Sponsoring Agency	61
Grant Proposals by Unit & Type	62
Contract & Grant Awards by Unit & Type	63
Contract & Grant Awards by Source	64
Intellectual Property Activity	65
NIH Awards by Unit	66
Federal Awards by Agency	67
Principal Investigators by Unit	67
Sponsored Project Activity Report	68

Research Expenditures by Unit FY 2007 - 2016

source: [Vanessa McKeown](#), Office of Budget & Financial Reporting

Includes operating expenses, indirect cost recoveries and capital purchased.

Notes (***pertains to all research tables***):

1. Because faculty in the Graduate School of Biomedical Sciences hold their primary appointments in another school/institution, their respective research proposals/awards/expenditures are reported accordingly, and not through GSBS.
2. Beginning in FY 2011, McGovern Medical School research activity includes the Institute of Molecular Medicine.

	FY 2007	FY 2008	FY 2009	FY 2010	FY 2011
School of Biomedical Informatics	\$1,885,972	\$2,012,164	\$2,835,099	\$4,867,324	\$7,348,731
School of Dentistry	1,375,730	1,148,042	1,853,479	2,472,447	3,668,681
McGovern Medical School	114,794,556	113,745,513	117,268,868	130,919,295	158,711,066
School of Nursing	1,449,821	1,455,079	1,713,043	1,872,930	1,911,299
School of Public Health	38,602,836	38,127,815	42,149,574	47,881,679	57,502,938
Harris County Psychiatric Center	120,386	281,041	103,876	54,292	211,573
Institute of Molecular Medicine	12,565,639	13,040,131	10,477,248	23,413,549	-
Academic Support Area	20,812,809	27,441,963	41,222,493	29,291,032	31,818,129
Grand Total UTHealth	\$191,724,126	\$197,251,748	\$217,623,681	\$240,772,548	\$261,172,417

	FY 2012	FY 2013	FY 2014	FY 2015	FY 2016
School of Biomedical Informatics	\$8,871,141	\$8,621,463	\$9,562,077	\$7,494,484	8,269,184
School of Dentistry	3,296,779	3,541,401	3,128,088	2,901,719	\$3,484,282
McGovern Medical School	126,391,448	127,687,758	129,939,638	133,821,022	141,450,730
School of Nursing	997,052	471,562	931,134	1,084,594	1,604,983
School of Public Health	62,290,432	50,980,190	48,818,644	48,174,634	45,512,796
Harris County Psychiatric Center	442,467	164,028	77,377	99,186	15,763
Institute of Molecular Medicine	-	-	-	-	-
Academic Support Area	24,418,856	30,453,165	30,907,267	29,141,911	25,095,777
Grand Total UTHealth	\$226,708,175	\$221,919,567	\$223,364,224	\$222,717,551	\$225,433,516

UT Health-Related Institutions Research Expenditures by Source *FY 2015*

source: [Research Expenditures for Texas Institutions of Higher Education](#), The Texas Higher Education Coordinating Board

Institution	Federal	State - Appropriated	State - Contracts & Grants	Institutional	Profit	Non-Profit	Total
UTHealth	\$125,889,594	\$25,428,375	\$11,380,557	\$13,613,902	\$10,000,405	\$34,094,034	\$220,406,867
UT HSC at San Antonio	85,939,917	7,021,927	3,794,954	16,228,011	14,921,519	13,348,670	141,254,998
UT Health Northeast (Tyler)	3,712,783	4,190,702	194,609	2,318,343	595,258	1,180,367	12,192,062
UT MD Anderson	161,170,909	212,265,681	32,050,146	121,601,653	81,076,352	172,412,726	780,577,467
UTMB- Galveston	98,050,186	666,698	2,139,735	15,237,522	3,378,470	18,408,631	137,881,242
UT Southwestern	183,787,496	36,667,266	42,092,144	18,661,222	25,605,823	95,880,122	402,694,073
Grand Total	\$658,550,885	\$286,240,649	\$91,652,145	\$187,660,653	\$135,577,827	\$335,324,550	\$1,695,006,709

Trends in UT Health-Related Institutions Research Expenditures *FY 2010 - 2015*

source: [Research Expenditures for Texas Institutions of Higher Education](#), The Texas Higher Education Coordinating Board

Institution	2010	2011	2012	2013	2014	2015	% Change 2010- 2015
UTHealth	\$240,772,552	\$261,172,417	\$226,708,175	\$220,143,776	\$221,370,328	\$220,406,867	-9%
UT HSC at San Antonio	185,229,018	178,732,380	163,819,965	156,424,014	143,809,825	141,254,998	-31%
UT Health Northeast (Tyler)	14,378,132	13,338,022	12,032,236	11,557,950	10,994,796	12,192,062	-18%
UT MD Anderson	547,034,744	623,903,456	647,540,896	670,569,609	736,193,431	780,577,467	30%
UTMB- Galveston	156,825,004	159,751,093	147,810,319	144,728,120	141,002,443	137,881,242	-14%
UT Southwestern	395,314,936	404,786,080	397,563,341	404,321,279	396,219,144	402,694,073	2%
Grand Total	\$1,539,554,386	\$1,641,683,448	\$1,595,476,944	\$1,607,744,748	\$1,649,589,967	\$1,695,006,709	9%

Research Expenditures by Type of Sponsoring Agency FY 2016

source: [Vanessa McKeown](#), Office of Budget & Financial Reporting

	Grand Total	Federal	State	Local	Private	Other-Appropriated	Other-Designated
School of Biomedical Informatics	\$8,269,184	4,779,583	702,946	0	642,971	1,321,388	822,297
School of Dentistry	\$3,484,282	3,042,962	183,474	0	239,067	0	18,780
Medical School	\$141,450,730	71,914,658	10,307,567	1,094	39,714,662	12,143,599	7,369,150
School of Nursing	\$1,604,983	957,360	33,499	0	614,124	0	0
School of Public Health	\$45,512,796	31,381,852	3,707,420	207,524	7,370,740	1,699,024	1,146,236
Harris County Psychiatric Center	\$15,763	0	0	0	15,763	0	0
Academic Support Area	\$25,095,777	9,021,584	389,884	0	149,729	7,970,803	7,563,777
Grand Total UTHealth	\$225,433,516	\$121,097,998	\$15,324,789	\$208,618	\$48,747,056	\$23,134,815	\$16,920,239

Grant Proposals by Unit & Type FY 2012 – 2016

source: [Amaris Ogu](#), Sponsored Projects Administration

	FY 2012	#	FY 2013	#	FY 2014	#	FY 2015	#	FY 2016	#
School of Biomedical Informatics										
Fellowship/Scholarship	\$0	0	\$0	0	\$0	0	\$0	0	\$0	0
Instruction	0	0	1,103,594	2	452,997	1	0	0	159,411	1
Research	22,047,217	31	18,656,597	29	37,334,525	52	42,590,117	48	30,141,113	51
Other	3,126,444	5	578,030	2	5,495	1	0	0	1,562,199	1
Total SMBI	\$25,173,661	36	\$20,338,221	33	\$37,793,017	54	\$42,590,117	48	\$31,862,723	53
School of Dentistry										
Fellowship/Scholarship	\$0	0	\$2,000	1	\$0	0	\$1,908,078	2	\$116,840	2
Instruction	2,383,407	3	327,000	2	319,860	2	0	0	575,000	3
Research	19,844,827	28	10,125,169	21	20,563,862	35	25,634,288	53	29,048,437	67
Other	615,507	2	70,995	4	2,035,000	3	30,000	3	0	0
Total UTSD	\$22,843,741	33	\$10,525,164	28	\$22,918,722	40	\$27,572,366	58	\$29,740,277	72
Graduate School Biomedical Sciences										
Fellowship/Scholarship	\$0	0	\$0	0	\$0	0	\$306,254	3	\$96,261	1
Instruction	0	0	0	0	0	0	0	0	40,000	1
Research	0	0	0	0	0	0	0	0	913,024	1
Total GSBS	\$0	0	\$0	0	\$0	0	\$306,254	3	\$1,049,285	3
McGovern Medical School										
Fellowship/Scholarship	\$4,433,444	43	\$5,633,430	59	\$4,361,653	50	\$4,814,515	55	\$18,000,367	93
Instruction	9,889,048	11	4,714,297	17	3,091,312	16	3,652,462	17	5,317,659	17
Research	693,720,434	805	631,652,479	777	612,514,352	866	744,961,025	934	874,981,277	973
Other	11,476,311	23	9,810,799	23	18,108,176	25	4,388,716	13	11,787,664	21
Total MS	\$719,519,237	882	\$651,811,005	877	\$638,075,493	957	\$757,816,718	1,019	\$910,086,967	1,104
School of Nursing										
Fellowship/Scholarship	\$2,974	1	\$30,000	1	\$120,000	3	\$273,744	3	\$300,000	1
Instruction	7,364,684	8	1,672,404	5	4,128,025	9	1,462,919	7	3,071,021	6
Research	8,045,721	29	3,829,015	25	5,207,700	22	8,042,909	28	11,128,719	27
Other	409,616	4	1,507,499	3	0	0	0	0	139,643	1
Total SON	\$15,822,995	42	\$7,038,918	34	\$9,455,725	34	\$9,779,572	38	\$14,639,383	35
School of Public Health										
Fellowship/Scholarship	\$57,200	1	\$39,434	1	\$374,989	1	\$150,994	2	\$421,418	5
Instruction	3,401,802	6	3,939,216	6	16,321,588	11	6,265,779	6	1,660,273	5
Research	236,362,480	319	191,456,195	292	185,316,343	314	253,878,757	286	617,802,533	313
Other	9,359,567	8	955,917	6	1,610,986	7	4,467,390	7	1,679,964	7
Total SPH	\$249,181,049	334	\$196,390,762	305	\$203,623,906	333	\$264,762,920	301	\$621,564,188	330
University Administration										
Fellowship/Scholarship	\$0	0	\$0	0	\$0	0	\$0	0	\$0	0
Instruction	229,286	2	0	0	0	0	0	0	0	0
Research	1,065,473	5	0	0	0	0	0	0	13,491	1
Other	0	0	0	0	0	0	45,000	1	0	0
Total UA	\$1,294,759	7	\$0	0	\$0	0	\$45,000	1	\$13,491	1
Harris County Psychiatric Center										
Research	\$0	0	\$0	0	\$0	0	\$99,006	3	\$0	0
Other	0	0	0	0	0	0	0	0	0	0
Total HCPC	\$0	0	\$0	0	\$0	0	\$99,006	3	\$0	0
UTHealth Total										
Fellowship/Scholarship	\$4,493,618	45	\$5,704,864	63	\$4,856,642	54	\$7,453,585	65	\$18,934,886	102
Instruction	23,268,227	30	11,756,511	32	24,313,782	39	11,381,160	30	10,823,364	33
Research	981,086,152	1,217	855,719,455	1144	860,936,782	1289	1,075,206,102	1,352	1,564,028,594	1,433
Other	24,987,445	42	12,923,240	38	21,759,657	36	9,237,360	27	16,218,755	33
Grand Total UTHealth	\$1,033,835,442	1,334	\$886,104,070	1,277	\$911,866,863	1,418	\$1,102,971,953	1,471	\$1,608,956,314	1,598

Contract & Grant Awards by Unit & Type FY 2012 - 2016

source: [Amaris Ogu](#), Sponsored Projects Administration

note: The Research category includes Clinical Studies.

	FY 2012	#	FY 2013	#	FY 2014	#	FY 2015	#	FY 2016	#
School of Biomedical Informatics										
Fellowship/Scholarship	\$170,742	4	\$54,834	1	\$0	0	\$0	2	\$0	0
Instruction	491,515	2	144,000	2	0	0	0	0	0	0
Research	1,839,358	24	3,119,287	31	2,860,039	29	6,081,695	43	5,966,581	42
Other	68,541	3	806,000	1	2,575,919	4	500,000	1	501,511	2
Total SBMI	\$2,570,156	33	\$4,124,121	35	\$5,435,958	33	\$6,581,695	46	\$6,468,092	44
School of Dentistry										
Fellowship/Scholarship	\$0	0	\$2,000	1	\$0	0	\$0	0	\$0	0
Instruction	322,500	2	315,000	1	319,860	2	315,000	1	313,457	2
Research	4,581,508	36	3,002,019	30	2,541,118	26	4,120,859	32	4,828,936	29
Other	327,546	1	12,000	2	0	0	10,000	1	2,914	1
Total UTSD	\$5,231,554	39	\$3,331,019	34	\$2,860,978	28	\$4,445,859	34	\$5,145,307	32
Graduate School Biomedical Sciences										
Fellowship/Scholarship	\$64,000	2	\$0	0	\$0	0	\$136,000	2	\$83,390	2
Instruction	21,160	2	0	0	0	0	0	0	40,000	1
Research	0	0	0	0	0	0	0	0	2,500	1
Total GSBS	\$85,160	4	\$0	0	\$0	0	\$136,000	2	\$125,890	4
McGovern Medical School										
Fellowship/Scholarship	\$1,334,296	24	\$1,425,426	29	\$3,174,074	35	\$2,129,487	42	\$5,877,272	51
Instruction	1,632,594	13	1,548,155	16	1,646,993	20	1,734,192	19	1,789,838	16
Research	120,126,689	548	103,624,385	536	125,951,818	522	113,509,443	578	144,496,672	585
Other	20,448,727	35	21,608,020	47	22,262,526	41	23,916,830	28	8,423,446	31
Total MMS	\$143,542,306	620	\$128,205,986	628	\$153,035,411	618	\$141,289,952	667	\$160,587,228	683
School of Nursing										
Fellowship/Scholarship	\$45,000	2	\$30,000	1	\$100,000	3	\$273,744	3	\$150,000	1
Instruction	1,010,864	4	6,790,874	7	2,637,259	5	2,040,991	7	1,199,236	4
Research	140,633	6	880,132	8	627,558	8	1,296,900	14	1,066,733	13
Other	259,402	2	278,394	3	400,670	7	446,588	9	254,944	2
Total SON	\$1,455,899	14	\$7,979,400	19	\$3,765,487	23	\$4,058,223	33	\$2,670,913	20
School of Public Health										
Fellowship/Scholarship	\$3,000	1	\$0	0	\$0	0	\$124,999	1	\$124,994	1
Instruction	2,536,563	6	1,623,261	4	2,523,627	5	3,018,616	6	3,075,849	9
Research	49,201,780	213	43,006,390	225	50,085,354	196	41,177,822	207	39,978,341	199
Other	2,774,796	7	2,246,424	7	4,693,626	14	8,653,283	14	1,350,308	10
Total SPH	\$54,516,139	227	\$46,876,075	236	\$57,302,607	215	\$52,974,720	228	\$44,529,492	219
University Administration										
Instruction	\$0	0	\$217,741	1	\$2,309	1	\$0	0	\$0	0
Research	0	0	0	0	19,109	2	0	0	13,291	1
Other	0	0	0	0	0	0	0	0	0	0
Total UA	\$0	0	\$217,741	1	\$21,418	3	\$0	0	\$13,291	1
UTHealth Total										
Fellowship/Scholarship	\$1,617,038	33	\$1,512,260	32	\$3,274,074	38	\$2,539,231	49	\$6,110,662	54
Instruction	6,015,196	29	10,639,031	31	7,130,048	33	7,108,799	33	6,418,380	32
Research	175,889,968	827	153,632,213	830	182,084,996	783	166,186,719	874	196,353,054	870
Other	23,879,012	48	24,950,838	60	29,921,961	65	33,526,701	53	10,535,623	47
Grand Total UTHealth	\$207,401,214	937	\$190,734,342	953	\$222,422,984	921	\$209,486,449	1,010	\$219,540,213	1,003

Contract & Grant Awards by Source FY 2012 - 2016

source: [Amaris Ogu](#), Sponsored Projects Administration

	FY 2012		FY 2013		FY 2014		FY 2015		FY 2016	
	\$	#	\$	#	\$	#	\$	#	\$	#
School of Biomedical Informatics										
Federal	\$2,142,781	25	\$3,123,382	29	\$2,707,915	27	\$5,313,746	37	\$5,323,020	34
State	53,886	1	860,834	2	2,555,000	4	550,000	2	653,540	3
Local	0	0	0	0	0	0	80,000	1	40,000	1
Private	373,489	7	139,905	4	173,043	2	637,949	6	451,532	6
Total SBMI	\$2,570,156	33	\$4,124,121	35	\$5,435,958	33	\$6,581,695	46	\$6,468,092	44
School of Dentistry										
Federal	\$4,227,958	24	\$2,764,079	22	\$2,170,076	12	\$3,836,585	20	\$4,594,235	20
State	466,481	4	0	0	87,870	3	184,184	1	0	0
Local	-	0	0	0	0	0	0	0	0	0
Private	537,115	11	566,940	12	603,032	13	425,090	13	551,072	12
Total UTSD	\$5,231,554	39	\$3,331,019	34	\$2,860,978	28	\$4,445,859	34	\$5,145,307	32
Graduate School Biomedical Sciences										
Federal	\$0	0	\$0	0	\$0	0	\$136,000	2	\$46,000	1
State	0	0	0	0	0	0	0	0	\$42,500	2
Private	0	0	0	0	0	0	0	0	\$37,390	1
Total GSBS	\$0	0	\$0	0	\$0	0	\$136,000	2	\$125,890	4
McGovern Medical School										
Federal	\$108,145,062	370	\$102,043,034	372	\$124,918,994	387	\$101,746,943	348	\$116,506,053	379
State	11,163,329	25	4,397,655	25	8,417,901	26	12,941,449	42	13,758,587	43
Local	-	0	0	0	0	0	4,000	1	40,000	2
Private	24,319,075	229	21,765,297	231	19,698,516	205	26,597,560	276	30,282,588	259
Total MMS	\$143,627,466	624	\$128,205,986	628	\$153,035,411	618	\$141,289,952	667	\$160,587,228	683
School of Nursing										
Federal	\$465,910	5	\$2,773,329	8	\$2,430,071	10	\$3,212,895	15	\$994,432	9
State	891,611	1	31,962	2	1,129,223	4	271,714	5	1,058,050	2
Local	0	0	0	0	0	0	0	0	0	0
Private	98,378	8	5,174,109	9	207,318	10	573,614	13	618,431	9
Total SON	\$1,455,899	14	\$7,979,400	19	\$3,766,612	24	\$4,058,223	33	\$2,670,913	20
School of Public Health										
Federal	\$44,507,820	172	\$39,129,651	174	\$43,208,285	152	\$33,938,590	144	\$34,331,650	147
State	3,109,247	14	3,384,977	18	5,662,043	15	14,800,578	30	4,616,826	25
Local	129,000	3	154,500	3	192,236	2	96,118	1	204,918	3
Private	6,770,072	38	4,206,947	41	8,240,043	46	4,139,434	53	5,376,098	44
Total SPH	\$54,516,139	227	\$46,876,075	236	\$57,302,607	215	\$52,974,720	228	\$44,529,492	219
University Administration										
Federal	\$0	0	\$217,741	1	\$21,418	3	\$0	0	\$0	0
State	0	0	0	0	0	0	0	0	0	0
Private	0	0	0	0	0	0	0	0	13291	1
Total UA	\$0	0	\$217,741	1	\$21,418	3	\$0	0	\$13,291	1
UTHealth Totals										
Federal	\$159,489,531	596	\$150,051,216	606	\$175,456,759	591	\$148,184,759	566	\$161,795,390	590
State	15,684,554	45	8,675,428	47	17,852,037	52	28,747,925	80	20,087,003	73
Local	129,000	3	154,500	3	192,236	2	100,118	2	244,918	5
Private	32,098,129	293	31,853,198	297	28,921,952	276	32,373,647	361	37,330,402	332
Grand Total UTHealth	\$207,401,214	937	\$190,734,342	953	\$222,422,984	921	\$209,486,449	1,010	\$219,540,213	1,003

Intellectual Property Activity FY 2008 - 2016

source: [Christine Flynn](#), Office of Technology Management

	2008	2009	2010	2011	2012	2013	2014	2015	2016
Invention Disclosures	62	65	63	72	67	64	52	63	46
New US Patent Applications Filed¹	32	37	48	49 ⁴	37 ⁴	49	46 ⁴	43	50
Licenses/Options Executed	25	25	25	22	23	29	29	26	23
Licenses & Options Generating Income	73	87	92	87	83	92 ⁴	102	105	99
U.S. patents issued	2	4	11	12	6	9	23	14 ⁴	6
Startup Companies Formed²	2	3	3	2	4	3 ⁴	2 ⁴	6 ⁴	0
Royalty & License Fee income³:	\$2,745,977	\$3,096,183	\$3,385,729	\$3,150,185	\$3,247,380	\$3,434,536	\$3,348,169	\$3,993,298	\$4,426,556

¹ Includes US provisional, utility, and PCT applications that do not have a US counterpart utility application.

² Includes new companies that were established based in part on technologies and discoveries from UHealth.

³ Includes License Management Fees beginning in FY 2010.

⁴ Corrected from *Fact Book 2015*.

NIH Awards by Unit FY 2009 - 2016

source: [Amaris Ogu](#), Sponsored Projects Administration

	FY 2009		FY 2010		FY 2011		FY 2012	
	Amount	#	Amount	#	Amount	#	Amount	#
School of Biomedical Informatics	\$547,936	2	\$1,914,166	4	\$401,500	2	\$0	0
School of Dentistry	903,860	6	2,058,125	10	2,013,346	8	2,364,659	13
Graduate School of Biomedical Sciences	0	0	0	0	0	0	0	0
McGovern Medical School	60,977,370	202	78,257,842	194	70,264,499	223	57,179,137	163
School of Nursing	1,429,473	4	1,150,536	3	429,525	1	0	0
School of Public Health	21,904,703	51	39,771,948	65	35,164,214	68	16,173,931	37
Institute of Molecular Medicine	9,290,462	28	7,858,227	23	-	-	-	-
University Administration	874,698	3	0	0	0	0	0	0
Grand Total UTHealth	\$97,051,424	296	\$131,010,844	299	\$108,273,084	302	\$75,717,727	213

	FY 2013		FY 2014		FY 2015		FY 2016	
	Amount	#	Amount	#	Amount	#	Amount	#
School of Biomedical Informatics	\$408,612	6	\$1,034,136	6	\$2,166,600	8	\$2,528,418	10
School of Dentistry	1,345,574	8	1,753,736	6	2,674,524	8	2,715,755	10
Graduate School of Biomedical Sciences	0	0	0	0	0	0	0	0
McGovern Medical School	56,463,220	205	62,034,716	197	50,983,796	145	65,929,239	196
School of Nursing	449,666	1	406,559	1	877,723	3	468,212	2
School of Public Health	18,634,938	58	20,760,092	44	20,325,197	39	18,908,582	31
Institute of Molecular Medicine	-	-	-	-	-	-	-	-
University Administration	0	0	0	0	0	0	13,291	1
Grand Total UTHealth	\$77,302,010	278	\$85,989,239	254	\$77,027,840	203	\$90,563,497	250

Federal Awards by Agency FY 2012 - 2016

source: [Amaris Ogu](#), Sponsored Projects Administration

	FY 2012		FY 2013		FY 2014		FY 2015		FY 2016	
	\$	#	\$	#	\$	#	\$	#	\$	#
Public Health Service (includes NIH)	\$87,814,678	237	\$86,258,441	302	\$96,706,264	276	\$81,478,355	219	\$97,400,776	265
NASA	0	0	210,325	3	160,820	3	49,999	2	31,949	1
National Science Foundation	744,800	7	849,431	4	557,306	4	765,997	6	717,054	8
Other Federal	70,930,053	352	62,733,019	297	78,032,369	308	65,394,386	339	63,645,611	316
Grand Total UTHealth	\$159,489,531	596	\$150,051,216	606	\$175,456,759	591	\$147,688,737	566	\$161,795,390	590

Principal Investigators by Unit FY 2009 - 2016

source: [Amaris Ogu](#), Sponsored Projects Administration

note: data represent the total number of PIs who held an active grant during the year

	FY 2009	FY 2010	FY 2011	FY 2012	FY 2013	FY 2014	FY 2015	FY 2016
School of Biomedical Informatics	14	16	12	9	11	14	15	12
School of Dentistry	15	16	16	21	18	20	18	17
Graduate School of Biomedical Sciences	1	2	0	0	0	0	1	3
McGovern Medical School	226	246	273	259	255	273	293	298
School of Nursing	11	13	8	9	12	14	16	15
School of Public Health	84	93	101	89	91	84	94	95
Institute of Molecular Medicine	18	24	-	-	-	-	-	-
Harris County Psychiatric Center	1	0	1	0	0	0	0	0
University Administration	7	2	1	0	1	2	0	1
Grand Total UTHealth	377	412	412	387	388	407	437	441

Sponsored Project Activity Report *FY 2016*

source: [Vanessa McKeown](#), Office of Budget & Financial Reporting

Note: Data represent amounts expended, not awarded

	Grants & Contracts Direct Costs	Grants & Contracts Indirect Costs	Gifts Direct Costs	Endowment Direct Costs	Total Expenditures
School of Biomedical Informatics	\$5,135,097	\$1,863,625	\$553,384	\$59,528	\$7,611,634
School of Dentistry	4,024,463	784,346	584,346	451,974	\$5,845,129
McGovern Medical School	103,064,529	27,165,893	20,714,400	8,123,503	\$159,068,326
School of Nursing	4,080,013	524,210	1,037,590	618,392	\$6,260,205
School of Public Health	41,939,543	9,196,423	571,289	402,701	\$52,109,957
Harris County Psychiatric Center	11,403	-	6,360	47,856	\$65,619
University Administration	10,804,098	1,936,293	431,002	305,879	\$13,477,272
Grand Total UTHealth	\$169,059,146	\$41,470,791	\$23,898,372	\$10,009,833	\$244,438,141

Patient Care

McGovern Medical School Outpatient Clinical Activity - Visits	71
Un-sponsored Medical & Dental Charity Care Provided by Faculty	71
School of Dentistry Clinical Activity: Patient Visits	72
School of Dentistry Clinical Activity: Patient Treatments	73
UT Health Services Patient Visits	74
UT Harris County Psychiatric Center Clinical Activity	74
Medical Practice Plan Summary of Operations	75

McGovern Medical School Outpatient Clinical Activity - Visits *FY 2005 - 2016*

source: Performance Measures Report to the Legislative Budget Board, November 2016

	Total Outpatient Visits
FY 2005	914,903
FY 2006	840,831
FY 2007	980,421
FY 2008	822,214
FY 2009	853,704
FY 2010	826,797
FY 2011	1,016,044
FY 2012	1,122,530
FY 2013	1,279,023
FY 2014	1,487,696
FY 2015	1,647,382
FY 2016	1,757,911

Un-sponsored Medical & Dental Charity Care Provided by Faculty *FY 2011-2016*

sources: Performance Measures Report to the Legislative Budget Board, November 2016 and [Kimberly Ruona](#), DDS, School of Dentistry

	Total Un-sponsored Charity Care
FY 2011	\$64,606,480
FY 2012	69,807,537
FY 2013	59,684,569
FY 2014	60,623,269
FY 2015	55,359,424
FY 2016¹	39,260,021

¹ Total includes \$38,372,181 provided by McGovern Medical School faculty as reported in the 2016 Performance Measures Report and \$887,840 provided by faculty in the School of Dentistry.

School of Dentistry Clinical Activity: Patient Visits *FY 2007 - 2016*

source: [Kimberly Ruona](#), DDS, School of Dentistry

	2007	2008	2009	2010	2011	2012	2013	2014	2015	2016
Clinics										
Main Campus (Student & Resident Clinics)	51,756	54,276	54,807	55,659	51,402	53,405	52,105	49,752	55,086	61,436
UT Dentists Group Practice	1,553	2,732	3,349	3,422	3,635	4,204	4,873	5,507	6,254	6,083
Houston Medical Center	4,480	5,095	4,738	4,337	4,084	3,657	3,992	2,730	3,668	3,220
Smith Tower	1,169	1,733	1,849	2,043	2,098	2,045	1,734	2,491	3,134	2,956
University Dental Center (UTHPB)	3,720	4,534	6,892	8,029	7,766	5,824	8,605	5,846	6,076	8,155
Clinics Subtotal	62,678	68,370	71,635	73,490	68,985	69,135	71,309	66,326	74,218	81,850
Outreach										
Access Health	0	0	0	0	0	0	0	135	304	297
Bering Omega Dental Clinic	499	428	424	333	400	446	347	598	560	383
Brazos Valley	618	708	2,165	1,758	1,314	0	0	0	0	0
City of Houston La Casa	351	998	1,058	799	1,076	996	729	858	682	1,375
City of Houston Sharpstown	0	0	0	0	0	0	0	0	0	779
Harris County Health Department	296	349	437	324	573	399	383	244	189	151
Holly Hall Retirement Community	0	0	0	0	0	0	0	0	0	68
HOPE Clinic	0	0	0	0	180	351	124	0	0	0
Healthcare for the Homeless - Houston	0	0	0	0	0	0	0	0	0	112
Mobile Dental Van	2,150	2,215	1,928	1,725	1,791	1,141	1,595	1,894	1,492	1,368
San Jose Clinic	0	0	0	0	0	0	205	212	161	615
TCH The Centers for Children & Women	0	0	0	0	0	0	0	1,946	3,559	6,497
TOMAGWA HealthCare Ministries	0	0	0	0	0	0	0	268	193	422
Veterans Administration	121	162	317	285	294	302	338	366	384	404
Outreach Subtotal	4,035	4,860	6,329	5,224	5,628	3,635	3,721	6,521	7,524	12,471
Hospitals										
Ben Taub	4,567	5,071	5,841	6,464	6,398	5,779	6,636	4,437	5,528	6,020
Lyndon B. Johnson	3,061	3,279	3,116	2,927	3,628	3,376	3,729	4,407	4,296	4,140
Memorial Hermann	592	550	680	789	251	663	840	712	706	962
Methodist	35	33	47	34	52	29	52	38	64	76
Veterans Administration	3,974	4,532	4,350	4,501	4,792	4,534	5,265	5,280	3,258	3,421
Hospitals Subtotal	12,229	13,465	14,034	14,715	15,121	14,381	16,522	14,874	13,852	14,619
Grand Total Visits	78,942	86,695	91,998	93,429	89,734	87,151	91,552	87,721	95,594	108,940

School of Dentistry Clinical Activity: Patient Treatments *FY 2007 - 2016*

source: [Kimberly Ruona](#), DDS, School of Dentistry

	2007	2008	2009	2010	2011	2012	2013	2014	2015	2016
Clinics										
Main Campus	142,066	143,348	155,791	154,983	142,875	153,221	153,109	152,347	166,291	189,128
UT Dentists Group Practice	5,224	9,834	12,544	12,457	13,731	15,138	17,285	17,683	20,358	21,280
Houston Medical Center	38,572	46,469	39,941	49,902	38,781	31,072	27,157	18,443	26,344	27,397
Smith Tower	2,381	2,096	2,061	2,335	2,355	2,323	2,014	2,875	3,462	3,473
University Dental Center	168	4,612	6,965	7,981	7,845	5,885	8,706	11,631	10,901	15,418
Clinics Subtotal	188,411	206,359	217,302	227,658	205,587	207,639	208,271	202,979	227,356	256,696
Outreach										
Access Health	0	0	0	0	0	0	0	209	729	402
Bering Omega Dental Clinic	339	258	246	220	244	262	187	283	244	266
Brazos Valley	1,122	1,669	3,483	7,932	1,780	0	0	0	0	0
City of Houston La Casa	608	2,083	3,393	3,959	3,487	3,628	2,588	3,074	1,850	5,313
City of Houston Sharpstown	0	0	0	0	0	0	0	0	0	1,865
Harris County Health Department	964	946	827	626	1,161	772	853	504	400	328
Holly Hall Retirement Community	0	0	0	0	0	0	0	0	0	68
HOPE Clinic	0	0	0	0	251	777	514	0	0	0
Healthcare for the Homeless - Houston	0	0	0	0	0	0	0	0	0	238
Mobile Dental Van	7,556	9,437	7,545	5,900	5,639	3,426	4,855	4,832	3,647	3,390
San Jose Clinic	0	0	0	0	0	0	255	232	190	818
TCH The Centers for Children & Women	0	0	0	0	0	0	0	4,075	11,195	21,878
TOMAGWA HealthCare Ministries	0	0	0	0	0	0	0	627	408	641
Veterans Administration	238	363	729	733	810	729	732	795	995	1,045
Outreach Subtotal	10,827	14,756	16,223	19,370	13,372	9,594	9,984	14,631	19,658	36,252
Hospitals										
Ben Taub	3,091	3,639	3,701	3,059	6,756	6,482	6,926	4,518	5,891	7,633
Lyndon B. Johnson	1,507	1,778	1,765	1,627	3,885	3,810	3,973	4,906	4,679	4,634
Memorial Hermann	2,812	3,123	3,260	4,191	3,157	2,875	2,677	1,550	1,843	3,334
Methodist	35	33	47	34	52	29	52	38	64	76
Veterans Administration	9,461	12,056	11,082	10,408	12,023	13,884	13,253	13,315	9,254	9,717
Hospitals Subtotal	16,906	20,629	19,855	19,319	25,873	27,080	26,881	24,327	21,731	25,394
Grand Total Treatments	216,144	241,744	253,380	266,347	244,832	244,313	245,136	241,937	268,745	318,342

UT Health Services Patient Visits *FY 2007 - 2016*

source: [David Bates](#), School of Nursing

¹This total does not include on-site patients seen under contract with local private-sector businesses.

Activity	2007	2008	2009	2010	2011	2012	2013	2014	2015	2016
Employee Visits	2,421	2,330	2,364	9,640	5,699	7,089	6,716	4,981	7,241	7,372
Private Patient Visits	10,732	7,054	5,506	4,805	4,670	4,823	5,472	5,548	5,347	9,571
Total Visits¹	13,153	9,384	7,870	14,445	10,369	11,912	12,188	10,529	12,588	16,943

UT Harris County Psychiatric Center Clinical Activity *FY 2005-2016*

source: [Lois Pierson](#), UT Harris County Psychiatric Center

	FY 2005	FY 2006	FY 2007	FY 2008	FY 2009	FY 2010
Average Daily Census	171.5	163	162.6	176	177	206.96
Number of Admissions	5,654	5,490	5,500	5,077	5,177	7,125
Patient Days	62,589	59,504	59,367	64,446	66,171	75,541
Average Length of Stay	11.1	10.7	10.5	12.7	12.78	9.75

	FY 2011	FY 2012	FY 2013	FY 2014	FY 2015	FY 2016
Average Daily Census	188	192	211.61	221.64	223.71	218.27
Number of Admissions	7,744	7,199	8,437	8,431	8,808	9,583
Patient Days	68,532	69,994	77,237	80,899	81,655	79,887
Average Length of Stay	8.8	9.7	9.2	9.6	9.3	8.3

Medical Practice Plan Summary of Operations *for the year ending August 31, 2016*

source: [Vanessa McKeown](#), Office of Budget & Financial Reporting

Note: Includes the operations of the nonprofit healthcare corporation.

Operating Revenues

Gross Patient Charges		
Gross Patient Charges Related to Uncompensated Care	\$866,270,045.62	
Other Gross Patient Charges	<u>508,144,141.95</u>	
Total Gross Patient Charges		1,374,414,187.57
Less: Discounts and Allowances		
Contractual Allowances – Medicaid	(352,226,199.76)	
Contractual Allowances - Medicare	(260,367,827.45)	
Contractual Allowances - Managed Care & Other Insurance	(219,106,134.89)	
Other Unreimbursed Medical Charges	(150,125,072.98)	
Bad Debt Expense	<u>(55,991,031.25)</u>	
Total Discounts and Allowances		<u>(1,037,816,266.33)</u>
Net Patient Revenues		336,597,921.24
Contractual Revenues		433,968,927.85
Other Operating Revenues		<u>46,726,367.45</u>
Total Operating Revenues		817,293,216.54

Operating Expenses

Faculty Salaries		323,123,798.21
Staff Salaries		148,038,537.19
Fringe Benefits		85,844,370.58
Maintenance and Operations		151,784,709.59
Travel		4,059,630.32
Official Functions		1,654,639.08
Other Expenses		<u>14,945,092.07</u>
Total Operating Expenses		729,450,777.04

Operating Income (Loss)

87,842,439.50

Nonoperating Revenues (Expenses)

Gift Contributions for Operations		1,000.00
Investment Income		1,667,695.65
Net Increase (Decrease) in Fair Value of Investments		<u>(484,940.28)</u>

Net Nonoperating Revenues (Expenses)

2,153,635.93

Income (Loss) Before Other Revenues, Expenses, Gains or Losses

89,996,075.43

Transfers In:		
Interfund/Interagency		(56,176,519.17)
Transfers Out:		
Debt Service		(2,110,509.48)
Capital Outlay		(3,867,637.11)
Interfund/Interagency		<u>(27,808.97)</u>

Change in Net Position

27,813,600.70

Net Position - September 1, 2015 114,359,047.88

Net Position - August 31, 2016

\$142,172,648.58

This page is intentionally blank

Employees

Faculty by Full-time/Part-time Status	79
Without Salary Faculty Appointments	79
Faculty by Race/Ethnicity & Gender	80
Faculty by Tenure Status & Gender	81
Classified Staff by Race/Ethnicity & Gender	82
Administrative & Professional (A&P) Staff by Race/Ethnicity & Gender	83
Employees by Race/Ethnicity & Gender	84
Employees by Employment Category	85
Budgeted Full-time Equivalent (FTE) Employees by Source of Funds	86
GSBS Faculty Membership by Institutional Affiliation	88

Faculty by Full-time/Part-time Status *Fall 2010 - 2016*

source: PeopleSoft HCM, Certified CBM008 Faculty Report to the Texas Higher Education Coordinating Board, as of October 1, 2016

Notes (*pertains to all faculty and employee tables*):

1. With the exception of Fall 2013, faculty in the Graduate School of Biomedical Sciences are counted in their school of primary appointment.
2. Beginning in Fall 2011, McGovern Medical School counts include Institute of Molecular Medicine faculty and/or staff.

School or Unit	Fall 2010		Fall 2011		Fall 2012		Fall 2013		Fall 2014		Fall 2015		Fall 2016	
	FT	PT	FT	PT	FT	PT	FT	PT	FT	PT	FT	PT	FT	PT
School of Biomedical Informatics	13	4	15	2	13	3	18	2	19	4	21	1	27	2
School of Dentistry	92	78	92	81	92	84	96	86	106	92	119	90	122	103
Graduate School of Biomedical Sciences	-	-	-	-	-	-	2	-	-	-	-	-	-	-
McGovern Medical School	1,054	117	951	111	1,054	104	1,143	111	1,257	126	1,291	100	1,328	111
School of Nursing	62	76	59	40	62	57	80	53	84	44	81	40	81	52
School of Public Health	156	23	147	29	156	29	158	32	152	37	154	36	152	31
University Administration	10	3	8	3	10	3	8	3	7	2	8	0	8	1
Grand Total UTHealth	1,387	301	1,272	266	1,387	280	1,505	287	1,625	305	1,674	267	1,718	300

Without Salary Faculty Appointments *FY 2007 - 2016*

source: [Kathy Rodgers](#), UTHealth Academic Affairs & Student Support Services

School/Unit	2007	2008	2009	2010	2011	2012	2013	2014	2015	2016
School of Biomedical Informatics	38	31	31	32	36	45	51	50	39	41
School of Dentistry	101	94	89	97	107	113	127	112	100	106
McGovern Medical School	445	420	419	477	474	521	544	549	556	560
Graduate School of Biomedical Sciences	385	502	451	430	438	450	430	421	370	371
School of Nursing	168	123	40	44	49	62	68	50	53	53
School of Public Health	223	206	267	267	314	341	344	338	304	283
IMM ¹	3	3	2	2	-	-	-	-	-	-
CCTS ¹		3	3	3	-	-	-	-	-	-
Grand Total UTHealth	1,363	1,382	1,302	1,352	1,418	1,532	1,564	1,520	1,422	1,414

¹ Effective FY 2011, faculty previously counted in the IMM and CCTS received appointments in the McGovern Medical School and are now included in those totals.

Faculty by Race/Ethnicity & Gender Fall 2013 – 2016

source: PeopleSoft HCM, Certified CBM008 Faculty Report to the Texas Higher Education Coordinating Board, as of October 1, 2016

	Fall 2013			Fall 2014			Fall 2015			Fall 2016		
	Male	Female	Total	Male	Female	Total	Male	Female	Total	Male	Female	Total
School of Biomedical Informatics												
Asian	8	2	10	6	3	9	5	3	8	8	4	12
Black	0	0	0	0	0	0	0	0	0	0	1	1
White	7	3	10	9	4	13	0	1	1	10	6	16
Unidentified	0	0	0	1	0	1	8	5	13	0	0	0
SBMI Total	15	5	20	16	7	23	13	9	22	18	11	29
School of Dentistry												
Asian	15	18	33	17	21	38	21	22	43	20	27	47
Black	3	4	7	4	6	10	5	7	12	6	7	13
Hispanic	6	11	17	8	11	19	10	13	23	11	13	24
American Indian	1	0	1	1	0	1	1	0	1	1	0	1
White	80	38	118	78	44	122	80	45	125	86	49	135
International	0	0	0	1	3	4	1	3	4	3	1	4
Unidentified	5	1	6	3	1	4	0	1	1	1	1	1
UTSD Total	110	72	182	112	86	198	118	91	209	128	97	225
Graduate School of Biomedical Sciences												
White	2	0	2	-	-	-	-	-	-	-	-	-
GSBS Total	2	0	2	0	0	0	0	0	0	0	0	0
McGovern Medical School												
Asian	224	151	375	237	171	408	253	164	417	277	174	451
Black	21	53	74	24	60	84	29	58	87	27	62	89
Hispanic	51	32	83	50	41	91	66	47	113	74	57	131
American Indian	5	0	5	6	0	6	3	0	3	4	0	4
White	403	266	669	428	280	708	421	275	696	417	274	691
International	12	9	21	32	24	56	32	24	56	31	22	53
Unidentified	17	10	27	24	6	30	16	3	19	16	4	20
MMS Total	733	521	1,254	801	582	1,383	820	571	1,391	846	593	1,439
School of Nursing												
Asian	4	9	13	2	9	11	3	10	13	4	13	17
Black	2	15	17	2	10	12	1	13	14	3	18	21
Hispanic	2	5	7	2	5	7	1	10	11	1	13	14
White	15	78	93	10	80	90	10	68	78	8	69	77
Pacific Islander	0	0	0	0	0	0	0	0	0	0	1	1
International	0	0	0	1	0	1	1	1	2	0	1	1
Unidentified	1	2	3	1	6	7	0	3	3	0	2	2
SON Total	24	109	133	18	110	128	16	105	121	16	117	133
School of Public Health												
Asian	19	15	34	19	13	32	22	11	33	21	12	33
Black	4	1	5	3	3	6	4	5	9	4	5	9
Hispanic	7	9	16	7	10	17	9	13	22	8	14	22
American Indian	1	0	1	1	0	1	1	0	1	1	0	1
White	56	69	125	54	71	125	49	76	125	48	70	118
International	0	0	0	1	0	1	0	0	0	0	0	0
Unidentified	7	2	9	5	2	7	0	0	0	0	0	0
SPH Total	94	96	190	90	99	189	85	105	190	82	101	183
University Administration												
White	5	4	9	4	3	7	4	4	8	5	4	9
International	0	1	1	0	1	1	0	0	0	0	0	0
Unidentified	0	1	1	0	1	1	0	0	0	0	0	0
UA Total	5	6	11	4	5	9	4	4	8	5	4	9
UTHealth												
Asian	270	195	465	281	217	498	304	210	514	330	230	560
Black	30	73	103	33	79	112	39	83	122	40	93	133
Hispanic	66	57	123	67	67	134	86	83	169	94	97	191
American Indian	7	0	7	8	0	8	5	0	5	6	0	6
White	568	458	1,026	583	482	1,065	564	469	1,033	574	472	1,046
Pacific Islander	0	0	0	0	0	0	0	0	0	0	1	1
International	12	10	22	35	28	63	34	28	62	34	24	58
Unidentified	30	16	46	34	16	50	24	12	36	17	6	23
Grand Total UTHealth	983	809	1,792	1041	889	1,930	1,056	885	1,941	1,095	923	2,018

Faculty by Tenure Status & Gender *Fall 2013 – 2016*

source: PeopleSoft HCM, Certified CBM008 Faculty Report to the Texas Higher Education Coordinating Board, as of October 1, 2016

	Fall 2013			Fall 2014			Fall 2015			Fall 2016		
	M	F	Total	M	F	Total	M	F	Total	M	F	Total
School of Biomedical Informatics												
Tenured	6	0	6	9	0	9	8	0	8	9	2	11
Non-tenured, On Track	3	1	4	2	2	4	0	3	3	2	2	4
Non Tenure Track	6	4	10	5	5	10	5	6	11	7	7	14
SBMI Total	15	5	20	16	7	23	13	9	22	18	11	29
School of Dentistry												
Tenured	19	10	29	19	8	27	19	7	26	16	7	23
Non-tenured, On Track	17	8	25	19	8	27	19	6	25	21	6	27
Non Tenure Track	74	54	128	74	70	144	80	78	158	91	84	175
UTSD Total	110	72	182	112	86	198	118	91	209	128	97	225
Graduate School of Biomedical Sciences												
Tenured	2	0	2	-	-	-	-	-	-	-	-	-
GSBS Total	2	0	2	-	-	-	-	-	-	-	-	-
McGovern Medical School												
Tenured	128	36	164	131	38	169	136	41	177	138	42	180
Non-tenured, On Track	57	23	80	52	24	76	50	25	75	46	31	77
Non Tenure Track	548	462	1,010	618	520	1,138	634	505	1,139	662	520	1,182
MMS Total	733	521	1,254	801	582	1,383	820	571	1,391	846	593	1,439
School of Nursing												
Tenured	1	17	18	1	16	17	0	10	10		8	8
Non-tenured, On Track	0	17	17	0	22	22	1	21	22	1	15	16
Non Tenure Track	23	75	98	17	72	89	15	74	89	15	94	109
SON Total	24	109	133	18	110	128	16	105	121	16	117	133
School of Public Health												
Tenured	33	31	64	31	31	62	31	35	66	33	36	69
Non-tenured, On Track	35	27	62	32	24	56	31	21	52	23	16	39
Non Tenure Track	26	38	64	27	44	71	23	49	72	26	49	75
SPH Total	94	96	190	90	99	189	85	105	190	82	101	183
University Administration												
Tenured	2	2	4	2	1	3	2	1	3	3	1	4
Non Tenure Track	3	4	7	2	4	6	2	3	5	2	3	5
UA Total	5	6	11	4	5	9	4	4	8	5	4	9
UTHealth Total												
Tenured	191	96	287	193	94	287	196	94	290	199	96	295
Non-tenured, On Track	112	76	188	105	80	185	101	76	177	93	70	163
Non Tenure Track	680	637	1,317	743	715	1,458	759	715	1,474	803	757	1,560
Grand Total UTHealth	983	809	1,792	1,041	889	1,930	1,056	885	1,941	1,095	923	2,018

Classified Staff by Race/Ethnicity & Gender *Fall 2016*

source: PeopleSoft HCM, as of October 1, 2016

Note: Totals do not include casual or student employees.

	Female	Male	Total
School of Biomedical Informatics			
Asian	12	8	20
Black	10	0	10
Pacific Islander	0	0	0
Hispanic	4	5	9
American Indian	0	0	0
White	10	7	17
Two or More	0	0	0
International	0	0	0
Unidentified	0	0	0
Total SBMI	36	20	56

School of Dentistry			
Asian	18	8	26
Black	56	9	65
Pacific Islander	0	0	0
Hispanic	69	10	79
American Indian	0	0	0
White	37	10	47
Two or More	2	1	3
International	0	0	0
Unidentified	1	0	1
Total UTSD	183	38	221

Graduate School of Biomedical Sciences			
Asian	5	1	6
Black	2	0	2
Pacific Islander	0	0	0
Hispanic	0	1	1
American Indian	0	0	0
White	8	1	9
Two or More	0	0	0
International	0	0	0
Unidentified	0	0	0
Total GSBS	15	3	18

McGovern Medical School			
Asian	263	153	416
Black	564	48	612
Pacific Islander	4	2	6
Hispanic	759	96	855
American Indian	8	1	9
White	804	191	995
Two or More	30	8	38
International	0	0	0
Unidentified	15	5	20
Total MMS	2,447	5,04	2,951

School of Nursing			
Asian	6	0	6
Black	22	2	24
Pacific Islander	0	0	0
Hispanic	13	3	16
American Indian	0	0	0
White	20	6	26
Two or More	0	1	1
International	0	0	0
Unidentified	0	0	0
Total SON	61	12	73

	Female	Male	Total
School of Public Health			
Asian	22	7	29
Black	36	8	44
Pacific Islander	0	0	0
Hispanic	108	23	131
American Indian	1	0	1
White	74	33	107
Two or More	1	0	1
International	0	0	0
Unidentified	4	0	4
Total SPH	246	71	317

University Administration			
Asian	41	39	80
Black	116	82	198
Pacific Islander	0	0	0
Hispanic	76	75	151
American Indian	0	2	2
White	184	162	346
Two or More	5	3	8
International	0	0	0
Unidentified	7	2	9
Total UA	429	365	794

Harris County Psychiatric Center			
Asian	30	28	58
Black	149	112	261
Pacific Islander	0	0	0
Hispanic	17	19	36
American Indian	0	0	0
White	35	27	62
Two or More	2	1	3
International	0	0	0
Unidentified	2	0	2
Total HCPC	235	187	422

UTHealth			
Asian	397	244	641
Black	955	261	1,216
Pacific Islander	4	2	6
Hispanic	1,046	232	1,278
American Indian	9	3	12
White	1,172	437	1,609
Two or More	40	14	54
International	0	0	0
Unidentified	29	7	36
Grand Total UTHealth	3,652	1,200	4,852

Administrative & Professional (A&P) Staff by Race/Ethnicity & Gender Fall 2016

source: PeopleSoft HCM, as of October 1, 2016

Note: Totals do not include casual or student employees.

	Female	Male	Total		Female	Male	Total
School of Biomedical Informatics				School of Public Health			
Asian	0	0	0	Asian	0	1	1
Black	1	0	1	Black	1	0	1
Pacific Islander	0	0	0	Pacific Islander	0	0	0
Hispanic	1	0	1	Hispanic	1	0	1
American Indian	0	0	0	American Indian	0	0	0
White	2	2	4	White	3	2	5
Two or More	0	0	0	Two or More	0	1	1
International	0	0	0	International	0	0	0
Unidentified	0	0	0	Unidentified	0	0	0
Total SBMI	4	2	6	Total SPH	5	4	9
School of Dentistry				University Administration			
Asian	1	1	2	Asian	1	1	2
Black	2	0	2	Black	6	2	8
Pacific Islander	0	0	0	Pacific Islander	0	0	0
Hispanic	1	0	1	Hispanic	4	2	6
American Indian	0	0	0	American Indian	0	0	0
White	1	0	1	White	42	32	74
Two or More	0	0	0	Two or More	2	0	2
International	0	0	0	International	0	0	0
Unidentified	1	0	1	Unidentified	1	0	1
Total UTSD	6	1	7	Total UA	56	37	93
Graduate School of Biomedical Sciences				Harris County Psychiatric Center			
Asian	1	0	1	Asian	0	0	0
Black	0	0	0	Black	3	1	4
Pacific Islander	0	0	0	Pacific Islander	0	0	0
Hispanic	0	0	0	Hispanic	0	0	0
American Indian	0	0	0	American Indian	0	0	0
White	0	1	1	White	6	2	8
Two or More	0	0	0	Two or More	0	0	0
International	0	0	0	International	0	0	0
Unidentified	0	0	0	Unidentified	0	0	0
Total GSBS	1	1	2	Total HCPC	9	3	12
McGovern Medical School				UTHealth			
Asian	38	10	48	Asian	41	13	54
Black	10	4	14	Black	26	7	33
Pacific Islander	0	0	0	Pacific Islander	0	0	0
Hispanic	12	8	20	Hispanic	19	10	29
American Indian	1	0	1	American Indian	1	0	1
White	56	40	96	White	111	81	192
Two or More	1	0	1	Two or More	3	1	4
International	0	0	0	International	0	0	0
Unidentified	6	3	9	Unidentified	8	3	11
Total MMS	124	65	189	Grand Total UTHealth	209	115	324
School of Nursing							
Asian	0	0	0				
Black	3	0	3				
Pacific Islander	0	0	0				
Hispanic	0	0	0				
American Indian	0	0	0				
White	1	2	3				
Two or More	0	0	0				
International	0	0	0				
Unidentified	0	0	0				
Total SON	4	2	6				

Employees by Race/Ethnicity & Gender *Fall 2016*

source: PeopleSoft HCM, Certified CBM008 Faculty Report to the Texas Higher Education Coordinating Board, as of October 1, 2016

Note: Totals do not include casual or student employees.

	Male	Female	Total		Male	Female	Total
School of Biomedical Informatics				School of Public Health			
Asian	16	16	32	Asian	29	34	63
Black	0	12	12	Black	12	42	54
Pacific Islander	0	0	0	Pacific Islander	0	0	0
Hispanic	5	5	10	Hispanic	31	123	154
American Indian	0	0	0	American Indian	1	1	2
White	19	18	37	White	83	147	230
Two or More	0	0	0	Two or More	1	1	2
International	0	0	0	International	0	0	0
Unidentified	0	0	0	Unidentified	0	4	4
Total SBMI	40	51	91	Total SPH	75	251	326
School of Dentistry				University Administration			
Asian	29	46	75	Asian	40	42	82
Black	15	65	80	Black	84	122	206
Pacific Islander	0	0	0	Pacific Islander	0	0	0
Hispanic	21	83	104	Hispanic	77	80	157
American Indian	1	0	1	American Indian	2	0	2
White	96	87	183	White	199	230	429
Two or More	1	2	3	Two or More	3	7	10
International	3	1	4	International	0	0	0
Unidentified	1	2	3	Unidentified	2	8	10
Total UTSD	167	286	453	Total UA	407	489	896
Graduate School of Biomedical Sciences				Harris County Psychiatric Center			
Asian	1	6	7	Asian	28	30	58
Black	0	2	2	Black	113	152	265
Pacific Islander	0	0	0	Pacific Islander	0	0	0
Hispanic	1	0	1	Hispanic	19	17	36
American Indian	0	0	0	American Indian	0	0	0
White	2	8	10	White	29	41	70
Two or More	0	0	0	Two or More	1	2	3
International	0	0	0	International	0	0	0
Unidentified	0	0	0	Unidentified	0	2	2
Total GSBS	4	16	20	Total HCPC	190	244	434
McGovern Medical School				UTHealth			
Asian	440	475	915	Asian	587	668	1,255
Black	79	636	715	Black	308	1,074	1,382
Pacific Islander	2	4	6	Pacific Islander	2	5	7
Hispanic	178	828	1,006	Hispanic	336	1,162	1,498
American Indian	5	9	14	American Indian	9	10	19
White	648	1,134	1,782	White	1,092	1,755	2,847
Two or More	8	31	39	Two or More	15	43	58
International	31	22	53	International	34	24	58
Unidentified	24	25	49	Unidentified	27	43	70
Total MMS	3,417	1,162	4,579	Grand Total UTHealth	2,410	4,784	7,194
School of Nursing							
Asian	4	19	23				
Black	5	43	48				
Pacific Islander	0	0	1				
Hispanic	4	26	30				
American Indian	0	0	0				
White	16	90	106				
Two or More	1	0	1				
International	0	1	1				
Unidentified	0	2	2				
Total SON	30	182	212				

Employees by Employment Category Fall 2013 – 2016

source: PeopleSoft HCM, Certified CBM008 Faculty Report to the Texas Higher Education Coordinating Board, as of October 1, 2016

¹ General A&P is a new employment category effective FY 2015. Employees in this category are primarily staff physicians and staff dentists, all of whom were categorized as Academic A&P in prior years.

Note: Totals do not include casual or student employees.

	2013	2014	2015	2016		2013	2014	2015	2016
School of Biomedical Informatics					University Administration				
Faculty	20	23	22	29	Faculty	11	9	8	9
Academic A&P	0	0	0	0	Academic A&P	0	0	1	0
Management A&P	3	4	4	6	Management A&P	76	79	91	93
General A&P ¹	-	-	0	0	General A&P ¹	-	-	0	0
Classified	44	48	55	56	Classified	790	802	849	794
SBMI Total	67	75	81	91	UA Total	877	890	949	896
School of Dentistry					Harris County Psychiatric Center				
Faculty	182	198	209	225	Faculty	0	0	0	0
Academic A&P	1	1	0	0	Academic A&P	0	0	0	0
Management A&P	6	8	5	6	Management A&P	11	10	11	12
General A&P ¹	-	-	3	1	General A&P ¹	-	-	0	0
Classified	193	188	213	221	Classified	434	423	452	422
UTSD Total	382	395	430	453	HCPC Total	445	433	463	434
Graduate School of Biomedical Sciences					UTHealth Total				
Faculty	2	0	0	0	Faculty	1,792	1,930	1,941	2,018
Academic A&P	0	0	1	1	Academic A&P	109	122	2	2
Management A&P	1	2	1	1	Management A&P	170	182	202	213
General A&P ¹	-	-	0	0	General A&P ¹	-	-	160	109
Classified	13	18	17	18	Classified	3,797	4,139	4,967	4,852
GSBS Total	16	20	19	20	Grand Total UTHealth	5,868	6,373	7,272	7,194
McGovern Medical School									
Faculty	1,254	1,383	1,391	1,439					
Academic A&P	107	121	0	1					
Management A&P	59	60	72	80					
General A&P ¹	-	-	157	108					
Classified	1,915	2,237	2,902	2,951					
MMS Total	3,335	3,801	4,522	4,579					
School of Nursing									
Faculty	133	128	121	133					
Academic A&P	1	0	0	0					
Management A&P	7	9	7	6					
General A&P ¹	-	-	0	0					
Classified	82	99	89	73					
SON Total	223	236	217	212					
School of Public Health									
Faculty	190	189	190	183					
Academic A&P	0	0	0	0					
Management A&P	7	10	11	9					
General A&P ¹	-	-	0	0					
Classified	326	324	390	317					
SPH Total	523	523	591	509					

Budgeted Full-time Equivalent (FTE) Employees by Source of Funds Fall 2016

source: [Vanessa McKeown](#), Office of Budget & Financial Reporting

Note: Totals do not include casual or student employees.

	Faculty	A&P	Classified	Total
School of Biomedical Informatics				
State Funds	14.34	5.95	40.05	60.34
Designated Funds	2.43	0.00	4.95	7.37
Contracts & Grant Funds	10.12	0.05	29.35	39.52
Current Restricted Funds	0.51	0.00	5.16	5.67
SBMI Total	27.40	6.00	79.50	112.90
School of Dentistry				
State Funds	132.67	6.40	185.68	324.75
Designated Funds	12.06	1.00	43.73	56.78
Contracts & Grant Funds	4.63	0.00	9.95	14.58
Current Restricted Funds	0.40	0.00	14.75	15.15
UTSD Total	149.76	7.40	254.10	411.26
Graduate School of Biomedical Sciences				
State Funds	0.00	2.70	104.85	107.56
Designated Funds	0.20	0.00	0.00	0.20
Contracts & Grant Funds	0.70	0.00	6.65	7.34
Current Restricted Funds	0.00	0.00	7.00	7.00
GSBS Total	0.90	2.70	118.50	122.10
McGovern Medical School (includes IMM)				
State Funds	145.80	26.15	441.51	613.45
Designated Funds	1,138.07	47.14	1,962.43	3,147.65
Contracts & Grant Funds	129.56	4.23	458.48	592.28
Current Restricted Funds	79.74	0.98	245.75	326.47
MMS Total	1,493.18	78.50	3,108.17	4,679.85
School of Public Health				
State Funds	85.53	8.43	159.32	253.28
Designated Funds	9.21	0.08	48.86	58.14
Contracts & Grant Funds	53.66	0.50	185.43	239.59
Current Restricted Funds	15.55	0.00	52.30	67.85
SPH Total	163.95	9.00	445.90	618.85
School of Nursing				
State Funds	66.41	6.84	35.05	108.31
Designated Funds	18.93	0.00	22.00	40.93
Contracts & Grant Funds	8.89	0.16	13.74	22.79
Current Restricted Funds	3.61	0.00	3.21	6.82
SON Total	97.84	7.00	74.00	178.84
Harris County Psychiatric Center				
State Funds	0.00	11.00	407.26	418.26
Current Restricted Funds	0.00	0.00	1.50	1.50
HCPC Total	0.00	11.00	408.76	419.76
University Administration				
State Funds	2.48	40.62	467.46	510.56
Designated Funds	0.48	37.45	134.23	172.16
Contracts & Grant Funds	0.00	1.05	27.83	28.88
Current Restricted Funds	0.00	0.02	0.23	0.25
UA Total	2.96	79.14	629.75	711.85

continued **Budgeted Full-time Equivalent (FTE) Employees by Source of Funds** *Fall 2016*

	Faculty	A&P	Classified	Total
All Other¹				
State Funds	0.00	4.67	73.65	78.32
Designated Funds	5.00	0.33	50.95	56.28
Auxiliary Enterprises	0.50	6.99	57.75	65.24
All Other Total	5.50	11.99	182.35	199.84
UTHealth				
State Funds	447.23	112.75	1,914.83	2,474.82
Designated Funds	1,186.38	86.00	2,267.14	3,539.52
Contracts & Grant Funds	207.56	5.99	731.43	944.97
Current Restricted Funds	99.81	1.00	329.89	430.70
Auxiliary Enterprises	0.50	6.99	57.75	65.24
Grand Total UTHealth	1,941.49	212.73	5,301.03	7,455.25

¹All Other: Includes personnel associated with: Physical plant operations and utilities, Texas-Mexico Border Projects, Animal Care, and Auxiliary Enterprises funds.

GSBS Faculty Membership by Institution *Fall 2007 - 2016*

source: [Patricia Bruesch, MPA](#), Graduate School of Biomedical Sciences

	2007	2008	2009	2010	2011	2012	2013	2014	2015	2016
School of Biomedical Informatics	6	5	5	5	4	1	2	2	2	3
School of Dentistry	10	11	9	9	10	6	4	5	7	7
McGovern Medical School ¹	136	140	150	187	200	174	171	168	171	190
School of Nursing	0	0	0	0	0	0	0	0	0	0
School of Public Health	19	19	18	18	15	16	14	11	14	17
UT MD Anderson Cancer Center	354	360	360	356	363	364	371	355	365	361
Texas A&M Institute of Biosciences & Technology	14	15	12	5	5	4	4	3	3	3
Other ¹	42	27	24	5	4	3	2	0	3	4
Grand Total GSBS	581	577	578	585	601	568	568	544	565	585

¹ Effective 2011, faculty counts for the Brown Foundation Institute of Molecular Medicine shift from Other to McGovern Medical School.

Finance & Philanthropy

Total Funds Operating Budget by Unit & Revenue Source	91
Total Funds Operating Budget by Revenue Source	92
Total Funds Operating Budget by NACUBO Function	93
State Funds Operating Budget	94
Endowment Trends	95
Voluntary Support	95
Faculty Endowment Status	96
Endowed Scholarships	96

Total Funds Operating Budget by Unit & Revenue Source FY 2013 – 2017

source: [Vanessa McKeown](#), Office of Budget & Financial Reporting

	FY 2013	FY 2014	FY 2015	FY 2016	FY 2017
School of Biomedical Informatics					
State Funds	\$3,338,611	\$3,679,466	\$3,810,782	\$4,867,111	\$5,036,075
Designated Funds	2,138,676	1,669,486	1,890,770	2,107,983	4,652,794
Contract & Grant Funds	13,738,120	5,018,261	4,145,564	3,454,734	3,982,615
Current Restricted Funds	1,742,483	394,853	430,366	1,428,913	1,210,833
Total SBMI	\$20,957,890	\$10,762,066	\$10,277,482	\$11,858,741	\$14,882,317
School of Dentistry					
State Funds	\$20,330,112	\$22,637,533	\$23,754,167	\$24,912,092	\$25,210,989
Designated Funds	9,379,809	11,065,208	13,195,885	15,399,698	16,858,571
Contract & Grant Funds	2,783,451	2,713,916	2,058,777	2,534,054	3,729,860
Current Restricted Funds	1,879,647	1,976,680	1,426,244	1,909,227	1,260,833
Total UTSD	\$34,373,019	\$38,393,337	\$40,435,073	\$44,755,071	\$47,060,253
Graduate School of Biomedical Sciences					
State Funds	\$4,607,470	\$4,916,200	\$4,931,535	\$4,757,677	\$4,624,801
Designated Funds	494,188	806,570	774,216	843,328	1,012,388
Contract & Grant Funds	53,500	0	0	1,067,679	1,349,790
Current Restricted Funds	944,494	263,278	560,683	1,013,606	781,709
Total GSBS	\$6,099,652	\$5,986,048	\$6,266,434	\$7,682,290	\$7,768,688
McGovern Medical School					
State Funds	\$41,333,344	\$52,653,750	\$52,167,338	\$49,553,140	\$50,427,751
Designated Funds	414,004,899	490,042,097	598,604,477	734,483,918	810,978,597
Contract & Grant Funds	89,970,086	82,391,580	79,433,192	93,824,548	94,098,821
Current Restricted Funds	39,624,318	37,483,331	37,935,937	46,723,804	51,194,000
Total MMS	\$584,932,647	662,570,758	768,140,944	924,585,410	1,006,699,169
School of Nursing					
State Funds	\$8,921,529	\$9,937,957	\$10,535,689	\$11,922,772	\$12,092,001
Designated Funds	6,354,372	6,379,005	7,919,135	7,829,408	8,977,328
Contract & Grant Funds	286,371	2,404,402	2,866,119	3,370,684	3,922,602
Current Restricted Funds	2,954,885	2,516,896	7,058,934	2,642,742	2,602,245
Total SON	\$18,517,157	\$21,238,260	\$28,379,877	\$25,765,606	\$27,594,176
School of Public Health					
State Funds	\$21,518,943	\$20,387,237	\$20,676,694	\$20,820,594	\$20,194,630
Designated Funds	8,315,719	9,311,960	10,265,516	16,502,544	16,987,663
Contract & Grant Funds	38,971,549	33,050,264	43,880,724	32,666,276	40,573,722
Current Restricted Funds	9,235,002	7,302,214	4,491,186	8,227,152	5,830,961
Total SPH	\$78,041,213	\$70,051,675	\$79,314,120	\$78,216,566	\$83,586,976
Harris County Psychiatric Center					
State Funds	\$46,163,337	\$48,107,191	\$49,842,822	\$50,730,661	\$52,497,178
Designated Funds	519,350	636,298	580,950	595,620	707,511
Contract & Grant Funds	0	0	0	0	0
Current Restricted Funds	455,999	124,014	159,613	80,932	82,736
Total HCPC	\$47,138,686	\$48,867,503	\$50,583,385	\$51,407,213	\$53,287,425
Administrative and Institutional Support					
State Funds	\$104,727,978	\$111,462,606	\$114,144,270	\$121,727,358	\$127,476,555
Designated Funds	50,942,272	58,634,918	62,017,764	67,864,962	78,916,353
Contract & Grant Funds	12,918,149	18,121,403	13,329,975	8,543,344	9,918,304
Current Restricted Funds	2,790,736	1,414,326	512,937	1,728,212	767,762
Unexpended Plant Funds	0	0	0	0	0
Total A&I Support	\$171,379,135	\$189,633,253	\$190,004,946	\$199,863,876	\$217,078,974
UTHealth					
State Funds	\$250,941,324	\$273,781,940	\$279,863,297	\$289,291,405	\$297,559,980
Designated Funds	492,149,285	578,545,542	695,248,713	845,627,461	939,091,205
Contract & Grant Funds	158,721,226	143,699,826	52,575,900	145,461,319	157,575,714
Current Restricted Funds	59,627,564	51,475,592	145,714,351	63,754,588	63,731,079
Unexpended Plant Funds	0	0	0	0	0
Auxiliary Enterprise Funds	22,689,466	23,357,259	25,357,743	22,081,091	24,796,234
Grand Total UTHealth	\$984,128,865	\$1,070,860,159	\$1,198,760,004	\$1,366,215,864	\$1,482,754,212

Total Funds Operating Budget by Revenue Source FY 2013 - 2017

source: [Vanessa McKeown](#), Office of Budget & Financial Reporting

	FY 2013	FY 2014	FY 2015	FY 2016	FY 2017
State Funds					
General Revenue	\$176,558,689	\$195,288,439	\$199,152,497	\$206,765,123	\$214,955,014
Estimated E&G Income					
Student Tuition & Fees	18,968,136	20,878,493	21,533,737	22,198,981	23,012,281
Interest on Time Deposits	1,500,000	1,500,000	1,500,000	1,860,159	1,985,159
Other Income	0	0	0	0	0
Income from Patients	6,400,000	6,400,000	6,800,000	6,800,000	7,600,000
State/Federal Grants & Contracts	416,145	770,000	940,000	953,938	1,094,196
Tobacco Settlements	3,600,322	3,675,720	3,546,441	3,540,648	0
HCPC	43,498,032	45,269,288	46,390,622	47,172,556	48,913,330
Total State Funds	\$250,941,324	\$273,781,940	\$279,863,297	\$289,291,405	\$297,559,980
Designated Funds	492,149,285	578,545,542	695,248,713	845,627,461	939,091,205
Contract and Grant Funds	158,721,226	143,699,826	145,714,351	145,461,319	157,575,714
Current Restricted Funds	59,627,564	51,475,592	52,575,900	63,754,588	63,731,079
Auxiliary Enterprise Funds	22,689,466	23,357,259	25,357,743	22,081,091	24,796,234
Unexpended Plant Funds	-	-	-	-	-
Grand Total UTHealth	\$984,128,865	\$1,070,860,159	\$1,198,760,004	\$1,366,215,864	\$1,482,754,212

Total Funds Operating Budget by NACUBO Function FY 2013 - 2017

source: [Vanessa McKeown](#), Office of Budget & Financial Reporting

	FY 2013	FY 2014	FY 2015	FY 2016	FY 2017
State Funds					
Instruction	\$94,944,737	\$101,016,274	\$102,462,413	\$99,520,514	\$100,687,729
Research	17,868,579	26,289,872	28,409,943	26,165,783	24,511,152
Public Service	425,750	423,611	145,975	161,768	162,811
Hospitals/Clinics	48,720,017	51,201,503	52,526,024	53,552,887	57,984,639
Academic Support	21,313,152	24,391,734	23,902,742	33,123,472	31,937,956
Student Services	1,937,961	1,996,606	2,021,609	2,408,924	2,484,855
Institutional Support	42,190,494	44,093,200	46,670,185	47,877,021	55,137,054
Operation & Maint. of Plant	23,434,109	24,262,615	23,641,561	26,398,191	24,570,939
Scholarships & Fellowships	106,525	106,525	82,845	82,845	82,845
Total State Funds	\$250,941,324	\$273,781,940	\$279,863,297	\$289,291,405	\$297,559,980
Designated Funds					
Instruction	298,613,622	352,033,603	424,726,294	501,428,756	540,549,948
Research	8,042,908	8,171,263	7,965,001	10,314,066	16,295,713
Public Service	1,975,630	988,758	917,745	7,464,133	5,268,420
Hospitals/Clinics	119,467,690	145,358,181	181,969,704	241,645,067	276,697,570
Academic Support	18,356,127	19,349,809	22,911,773	19,835,301	29,341,347
Student Services	5,807,426	6,356,326	7,973,566	8,348,582	8,446,023
Institutional Support	20,043,233	25,959,338	27,013,789	36,350,692	43,292,213
Operation & Maint. of Plant	17,668,552	17,353,447	18,615,104	16,980,795	15,762,219
Scholarship & Fellowships	2,174,097	2,974,817	3,155,737	3,260,069	3,437,752
Total Designated Funds	492,149,285	578,545,542	695,248,713	845,627,461	939,091,205
Contract & Grant Funds	158,721,226	143,699,826	145,714,351	145,461,319	157,575,714
Current Restricted Funds	59,627,564	51,475,592	52,575,900	63,754,588	63,731,079
Auxiliary Enterprise Funds	22,689,466	23,357,259	25,357,743	22,081,091	24,796,234
Unexpended Plant Funds	0	0	0	0	0
Grand Total UTHealth	\$984,128,865	\$1,070,860,159	\$1,198,760,004	\$1,366,215,864	\$1,482,754,212

State Funds Operating Budget FY 2013 - 2017

source: [Vanessa McKeown](#), Office of Budget & Financial Reporting

	FY 2013	FY 2014	FY 2015	FY 2016	FY 2017
Instruction & Academic Support					
School of Biomedical Informatics	\$1,955,623	\$1,967,232	\$1,815,806	\$1,962,285	\$2,431,580
School of Dentistry	17,154,608	19,319,213	19,889,135	21,238,830	21,278,438
Graduate School Biomedical Sciences	4,607,470	4,831,271	4,876,535	4,757,677	4,624,801
McGovern Medical School	34,809,457	40,261,270	39,286,629	36,859,747	37,943,134
School of Nursing	8,921,529	9,937,957	10,535,689	11,922,772	12,092,001
School of Public Health	16,688,157	15,254,943	15,583,994	15,366,884	15,946,618
Library	619,560	648,769	662,808	3,438,183	566,311
Organized Activities	1,691,109	1,613,401	1,912,254	1,937,459	1,809,823
Special Items - Instructional Support	3,332,758	3,570,499	3,728,109	4,010,404	3,395,573
Total - I&AS	\$89,780,271	\$97,404,555	\$98,290,959	\$101,494,241	\$100,088,279
Research					
Research Enhancement	2,325,571	4,600,125	4,370,143	4,264,402	3,251,935
Special Items - Research	8,718,238	14,723,505	15,660,623	13,903,047	13,606,751
Total - Research	\$11,043,809	\$19,323,630	\$20,030,766	\$18,167,449	\$16,858,686
Public Service					
Special items - Public Service	326,379	327,385	114,856	122,610	125,035
Health Care					
Patient Care Activities	40,719,389	39,820,999	41,549,896	42,550,678	44,702,090
Special Items - Health Care	713,795	3,365,793	3,290,985	3,298,693	3,280,466
Total - Health Care	\$41,433,184	\$43,186,792	\$44,840,881	\$45,849,371	\$47,982,556
Institutional Support					
Institutional Support	24,422,740	25,996,320	27,531,446	30,234,172	33,470,908
Special Items - Institutional Support	85,000	0	0	0	0
Total - Institutional Support	\$24,507,740	\$25,996,320	\$27,531,446	\$30,234,172	\$33,470,908
Student Services					
Student Services	1,573,033	1,630,337	1,599,617	1,825,871	1,908,359
Staff Benefits					
Staff Benefits	45,265,152	49,485,790	51,884,868	54,925,359	56,040,382
Operation & Maintenance of Plant					
Operation & Maintenance of Plant	21,230,772	21,961,925	21,437,570	23,505,750	21,720,239
Tuition Revenue Bond Debt Retirement	12,559,883	12,562,560	12,558,568	12,557,418	18,749,811
Total - Operation & Maintenance of Plant	\$33,790,655	\$34,524,485	\$33,996,138	\$36,063,168	\$40,470,050
Scholarships and Fellowships					
Scholarships and Fellowships	23,680	23,680	82,845	82,845	82,845
E&G Capital Projects					
Capital Projects	3,197,421	1,878,966	1,490,921	526,319	532,880
Grand Total UTHealth	\$250,941,324	\$273,781,940	\$279,863,297	\$289,291,405	\$297,559,980

Endowment Trends *FY 2007 - 2016*

source: [Ty Sponberg](#), Office of Development

As of August 31	Number of Endowments	Book Value	Market Value	Annual % Change in Book Value
2007	342	\$100,097,367	\$153,905,322	14.8%
2008	372	108,079,833	150,848,252	8.0%
2009	397	111,481,108	128,845,537	3.2%
2010	415	117,496,003	143,418,956	5.4%
2011	424	122,528,972	161,583,780	4.3%
2012	446	134,616,212	172,215,871	9.9%
2013	470	155,149,196	196,090,721	15.3%
2014	496	163,834,343	222,145,972	5.6%
2015	526	223,734,777	273,297,429	36.6%
2016	573	256,596,233	303,593,995	14.7%

Voluntary Support *FY 2014 - 2016*

source: [Lisa Christison](#), Office of Development

Source of Cash Received	FY 2014	FY 2015	FY 2016
Alumni	\$1,658,200	\$703,457	\$1,110,521
Individual	5,931,353	10,480,221	8,458,455
Foundation	19,142,547	24,262,428	35,771,305
Corporation	4,954,068	4,281,666	3,955,592
Organization	5,492,631	6,618,188	6,157,275
Grand Total UTHealth	\$37,178,799	\$46,345,960	\$55,453,148

Faculty Endowment Status *FY 2016*

source: [Ty Sponberg](#), Office of Development

Status as of August 31, 2016			
Type of Faculty Endowment	Total Number	Number filled	Percent filled
Distinguished University Chair	9	9	100%
Distinguished Chair	28	24	86%
Chair	50	41	82%
Distinguished Professorship	34	27	80%
Professorship	64	58	91%
Faculty Fellowship	1	1	100%
Grand Total UTHHealth	186	160	86%

Endowed Scholarships *FY 2014 - 2016*

source: [Ty Sponberg](#), Office of Development

As of August 31	Number of Endowed Scholarships	Book Value	Market Value
2014	182	\$14,848,208	\$19,640,389
2015	189	\$16,985,527	\$20,971,126
2016	198	\$19,837,519	\$23,572,551

Physical Facilities

Capital Equipment Expenditures by Asset Category	99
Facilities Operating Expenditures (Owned)	100
Purchased Utilities	100
Space Inventory by Function	101
Space Inventory by Program	102

Capital Equipment Expenditures by Asset Category *FY 2007 - 2016*

source: [Heidemarie Hellriegel](#), Capital Assets Management

Asset Category Description	FY 2007	FY 2008	FY 2009	FY 2010	FY 2011
Office equipment & furniture	\$222,598	\$103,819	\$1,383,971	\$426,278	\$95,303
Physical plant & police	1,306,921	714,466	136,098	287,277	363,079
Audio-visual & media production	494,748	571,250	719,170	1,383,759	403,433
Medical, lab, & research	8,105,553	6,796,484	12,527,691	8,790,159	7,860,934
Hospital & patient care	363,376	57,193	110,587	139,409	339,254
Instructional, teaching, & library	82,387	68,741	210,314	208,467	211,602
Data processing & computer related	4,505,968	2,706,385	3,156,083	3,225,758	2,790,354
Print shop	0	40,000	0	0	0
Food service	0	13,526	34,865	0	0
Recreational	56,888	23,100	0	10,878	110,919
Grand Total UTHealth	\$15,138,439	\$11,094,963	\$18,278,779	\$14,471,985	\$12,174,878

Asset Category Description	FY 2012	FY 2013	FY 2014	FY 2015	FY 2016
Office equipment & furniture	\$40,157	\$2,963,310	\$6,915	\$19,137	\$71,535
Physical plant & police	947,165	226,622	404,117	195,308	345,267
Audio-visual & media production	199,984	335,594	759,303	229,481	197,846
Medical, lab, & research	5,042,386	4,103,540	4,609,153	7,415,587	7,617,539
Hospital & patient care	434,973	31,956	644,049	50,568	95,365
Instructional, teaching, & library	472,757	606,426	684,730	437,974	1,207,045
Data processing & computer related	9,153,189	7,106,156	8,914,029	8,465,693	6,399,759
Print shop	0	0	0	976,796	0
Food service	5,148	23,197	7,447	44,828	9,250
Recreational	0	0	0	0	0
Grand Total UTHealth	\$16,295,759	\$15,396,800	\$16,029,744	\$17,835,374	\$15,943,606

Facilities Operating Expenditures (Owned) FY 2016

source: [Duane Heuer](#), Facilities Operations

Building	Purchased Utilities	Maintenance & Operation	Housekeeping	FY 2016 Total
Cyclotron Facility	\$47,227	\$25,467	\$2,323	\$75,017
McGovern Medical School	5,788,290	1,581,832	599,609	\$7,969,731
Operations Center	206,605	384,535	117,480	\$708,620
Reuel A. Stallones	809,031	519,005	168,021	\$1,496,057
University Center Tower	1,016,039	1,243,922	316,963	\$2,576,924
Regional Academic Health Center	149,319	203,916	31,923	\$385,158
School of Nursing	353,811	336,582	161,373	\$851,766
UT Professional Building	1,172,542	1,228,079	406,355	\$2,806,976
Sarofim Research Building	1,572,998	550,808	127,803	\$2,251,609
Medical School Expansion	2,528,179	497,258	99,183	\$3,124,620
Behavioral & Biomedical Sciences	725,761	331,856	125,871	\$1,183,488
School of Dentistry	1,021,793	597,899	377,710	\$1,997,402
Jesse Jones Library	41,498	97,907	41,687	\$181,092
Cooley Life Center	26,017	34,633	17,848	\$78,498
Grand Total UTHealth	\$15,459,110	\$7,633,699	\$2,594,149	\$25,686,958

Purchased Utilities FY 2007 - 2016

source: [Duane Heuer](#), Facilities Operations

Figures include utilities costs for THI lease space as well as electricity, chilled water, steam, water, sewer, waste collection and natural gas for owned buildings exclusive of South Campus Housing and Recreation Center.

Year	Total Expenditures	Annual % change
FY 2007	\$14,939,336	11%
FY 2008	\$17,612,222	18%
FY 2009	\$17,596,603	0%
FY 2010	\$17,338,119	-2%
FY 2011	\$15,816,734	-9%
FY 2012	\$17,206,370	9%
FY 2013	\$15,933,556	-7%
FY 2014	\$16,094,284	1%
FY 2015	\$16,030,465	0%
FY 2016	\$15,516,958	-3.2%

Space Inventory by Function FY 2007-2016

source: [Bret Wandel](#), Facilities Operations

¹ASF = Assignable Square Feet

	FY 2007	FY 2008	FY 2009	FY 2010	FY 2011
Classroom	77,031	76,618	71,286	84,189	89,848
Lab	447,026	528,423	525,379	504,178	521,149
Office	836,998	879,282	884,130	921,541	944,724
Study	30,363	30,332	32,258	33,045	31,962
Special Use	76,970	92,387	92,055	101,843	87,081
General Use	107,902	108,011	106,800	102,638	100,192
Support	1,275,870	1,280,008	1,280,735	1,279,071	1,282,019
Health Care	266,127	254,675	257,185	293,569	270,412
Residential	565,933	565,933	565,933	565,933	565,981
Vacant	52,971	46,715	45,249	34,174	59,209
Total ASF¹	3,737,191	3,862,384	3,861,011	3,920,182	3,952,577

	FY 2012	FY 2013	FY 2014	FY 2015	FY 2016
Classroom	92,519	95,767	95,526	93,742	94,267
Lab	516,631	514,385	511,232	510,441	505,524
Office	959,183	990,998	1,011,563	1,059,029	1,073,248
Study	31,521	34,505	28,771	28,666	56,299
Special Use	83,634	74,302	72,802	72,656	72,511
General Use	105,626	105,629	115,547	110,025	116,673
Support	1,279,445	1,269,093	1,270,780	1,374,932	1,378,613
Health Care	339,981	470,888	657,763	604,837	796,029
Residential	565,981	566,030	579,456	700,835	701,180
Vacant	57,007	23,073	15,954	19,097	46,778
Total ASF¹	4,031,529	4,144,671	4,359,395	4,574,260	4,841,120

Space Inventory by Program FY 2007-2016

source: [Bret Wandel](#), Facilities Operations

¹ASF = Assignable Square Feet

	FY 2007	FY 2008	FY 2009	FY 2010	FY 2011
Instruction	466,074	480,697	484,139	469,624	462,444
Research	534,032	628,256	636,394	619,950	646,635
Public Service	46,530	59,342	57,674	152,784	142,242
Acad. Support	368,754	391,607	398,074	414,665	428,373
Student Service	1,295,466	1,283,935	1,283,158	1,280,851	1,281,981
Institutional Support	677,296	685,945	699,069	694,674	701,014
Physical Plant Operations	79,694	76,841	73,596	69,264	68,750
Independent Operations	216,374	209,045	183,656	184,196	161,929
Vacant	52,971	46,715	45,249	34,174	59,209
Total ASF¹	3,737,191	3,862,384	3,861,009	3,920,182	3,952,577

	FY 2012	FY 2013	FY 2014	FY 2015	FY 2016
Instruction	501,654	610,532	713,570	705,168	789,367
Research	633,720	616,472	623,567	637,984	632,133
Public Service	177,531	240,706	344,861	344,639	431,399
Acad. Support	433,263	424,974	447,171	441,677	473,075
Student Service	1,286,239	1,279,131	1,292,653	1,266,994	1,264,790
Institutional Support	712,529	720,555	718,423	958,019	958,469
Physical Plant Operations	68,801	65,330	66,075	62,318	64,612
Independent Operations	160,783	163,899	137,121	138,364	180,496
Vacant	57,007	23,073	15,954	19,097	46,778
Total ASF¹	4,031,529	4,144,671	4,359,395	4,574,260	4,841,120