

Congenital Diaphragmatic Hernia

Panel discussion & audience feedback

Dick Tibboel, MD, PhD

Richard Keijzer, MD, PhD

Rodrigo Ruano, MD, PhD

Kevin Lally, MD, MS

Theresa Grover, MD

Matthew Harting, MD, MS

Disclosures

I have no conflicts of interest to disclose.

CDH case presentation

Using the app:

- Download Poll Everywhere
- Join a presentation
 - [PollEv.com/matthewthart564](https://pollev.com/matthewthart564)

By text:

- Text “MATTHEWTHART564” to 22333

Introductory questions

What is your current role?

Faculty physician

Training physician

Nurse / APN / NP / PA

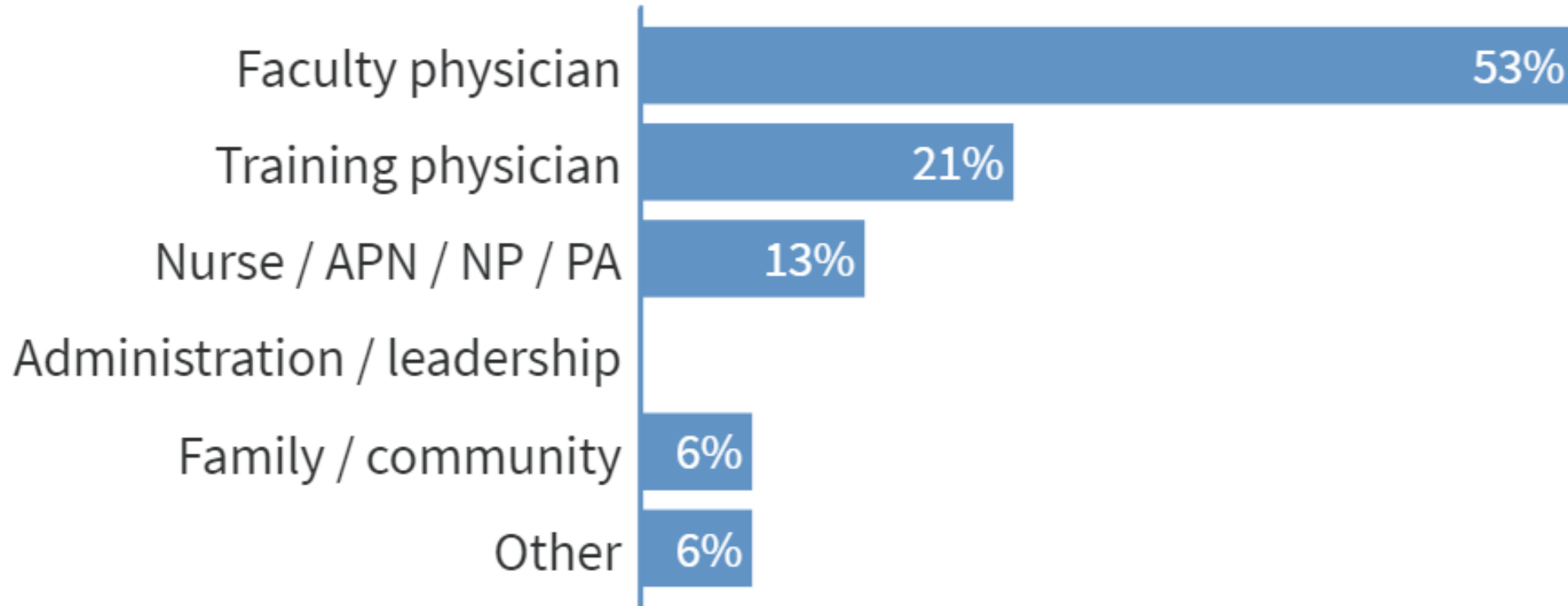
Administration / leadership

Family / community

Other

Introductory questions

What is your current role?



Introductory questions

What is your current / desired area of specialty?

Pediatric surgery

Neonatology

Pediatric critical care

Maternal fetal medicine / obstetrics

General Pediatrics / Pulmonology / Radiology

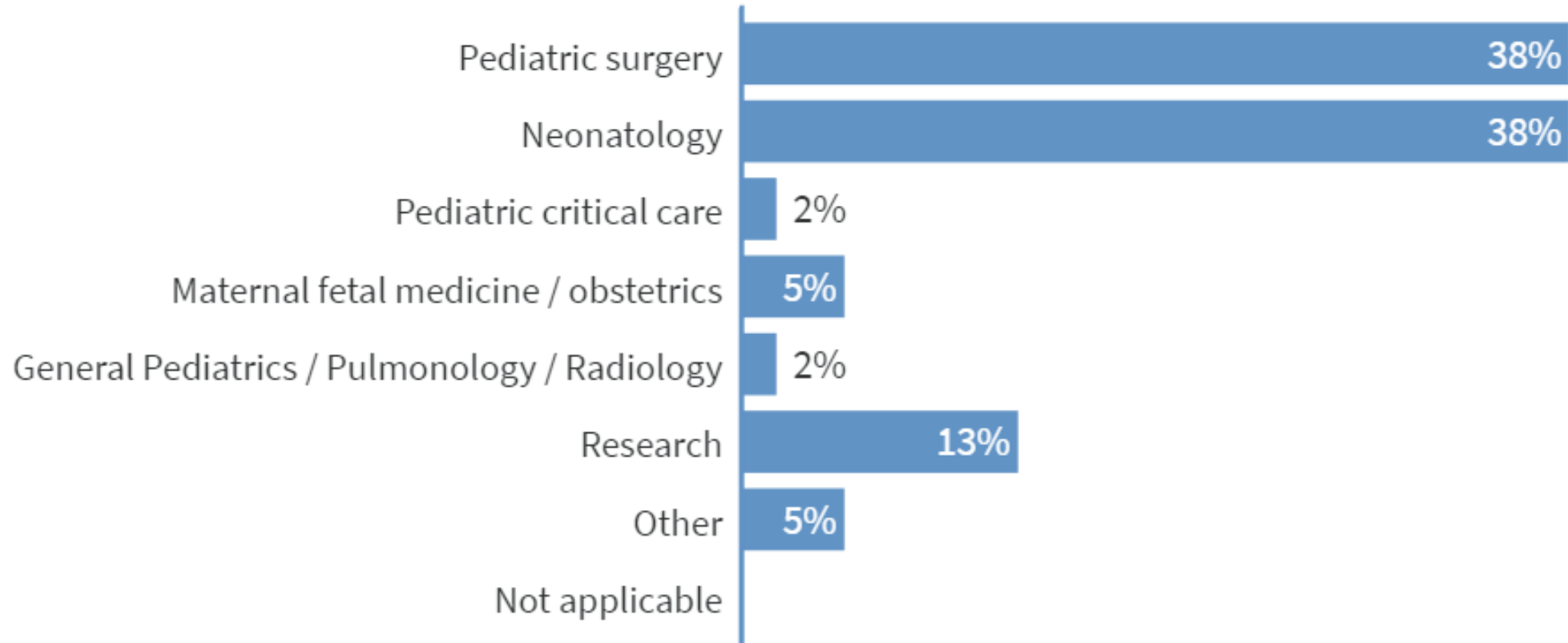
Research

Other

Not applicable

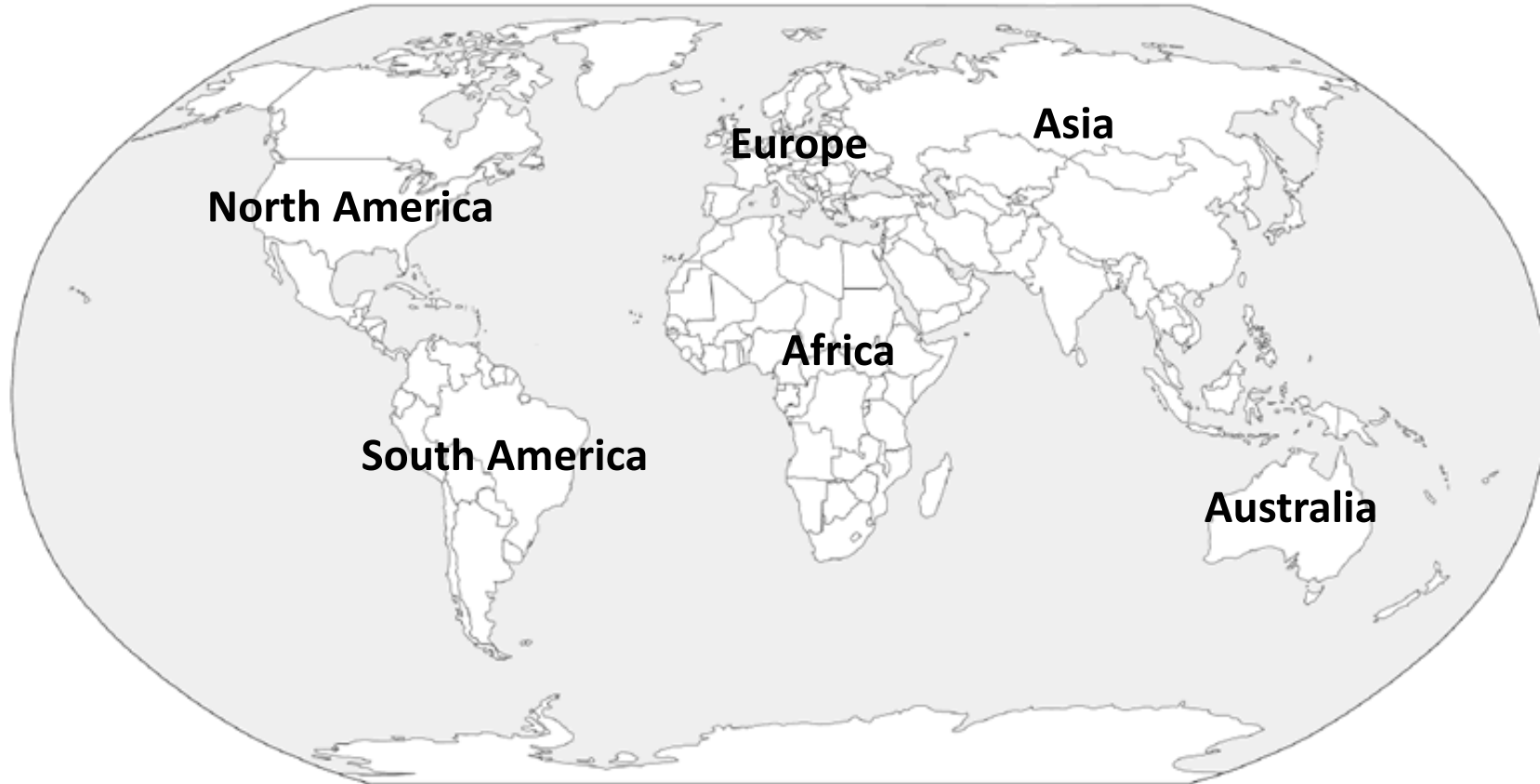
Introductory questions

What is your current / desired area of specialty?



Introductory questions

Where are you from?



Where are you from?



Total Results: 79

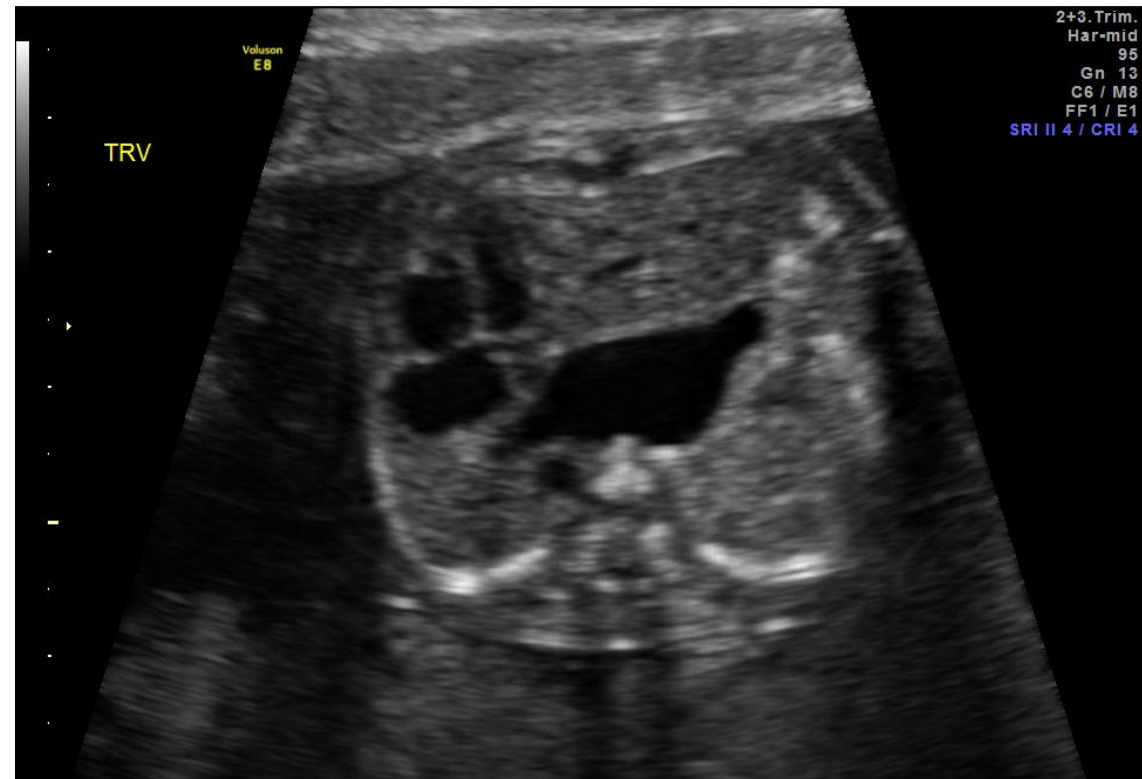
Reminders...

Feel free to come to the microphone anytime – audience participation makes this way more fun and educational...

If I cut you off, only trying to stay on time – lot of ground to cover.

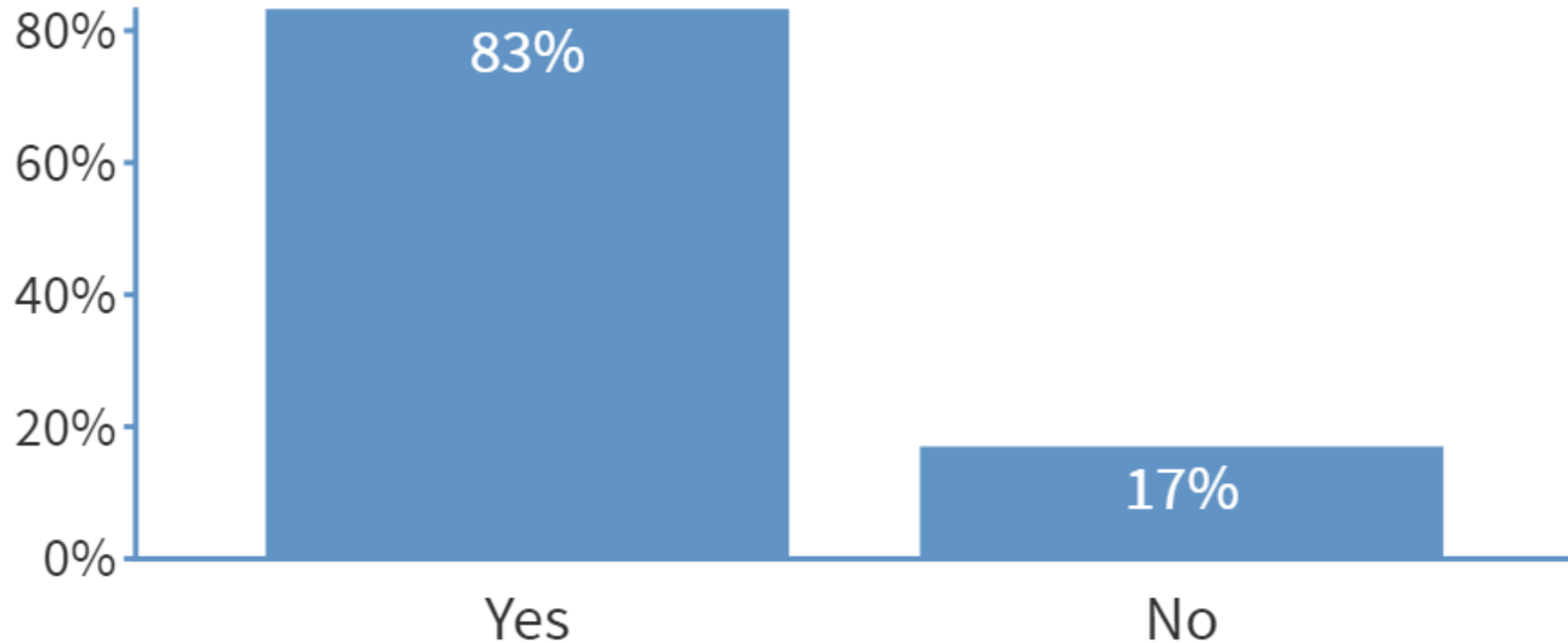
CDH case presentation

- You are asked to see a 29 yo mother (first pregnancy) with a 20 week EGA fetus who has a suspected left CDH on an initial screening US



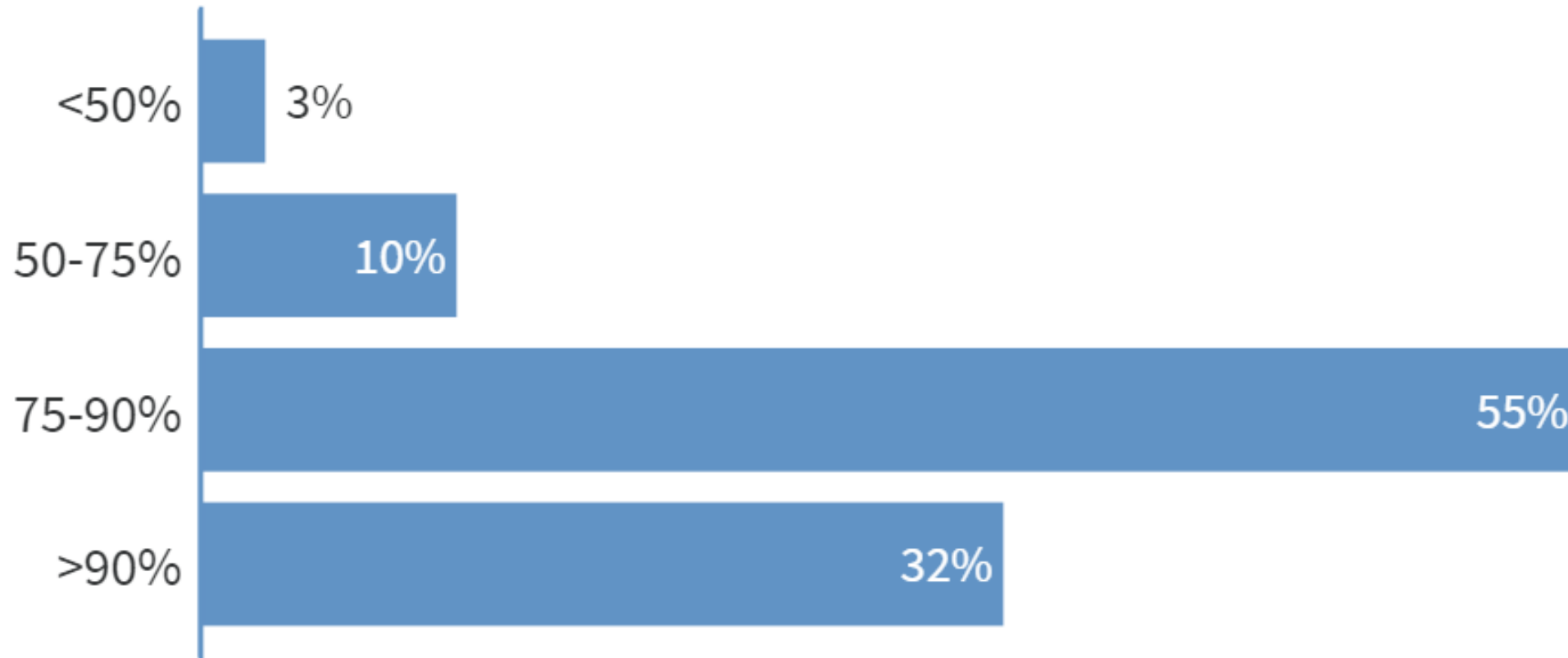
Fetal

Do you have a fetal center at your institution?



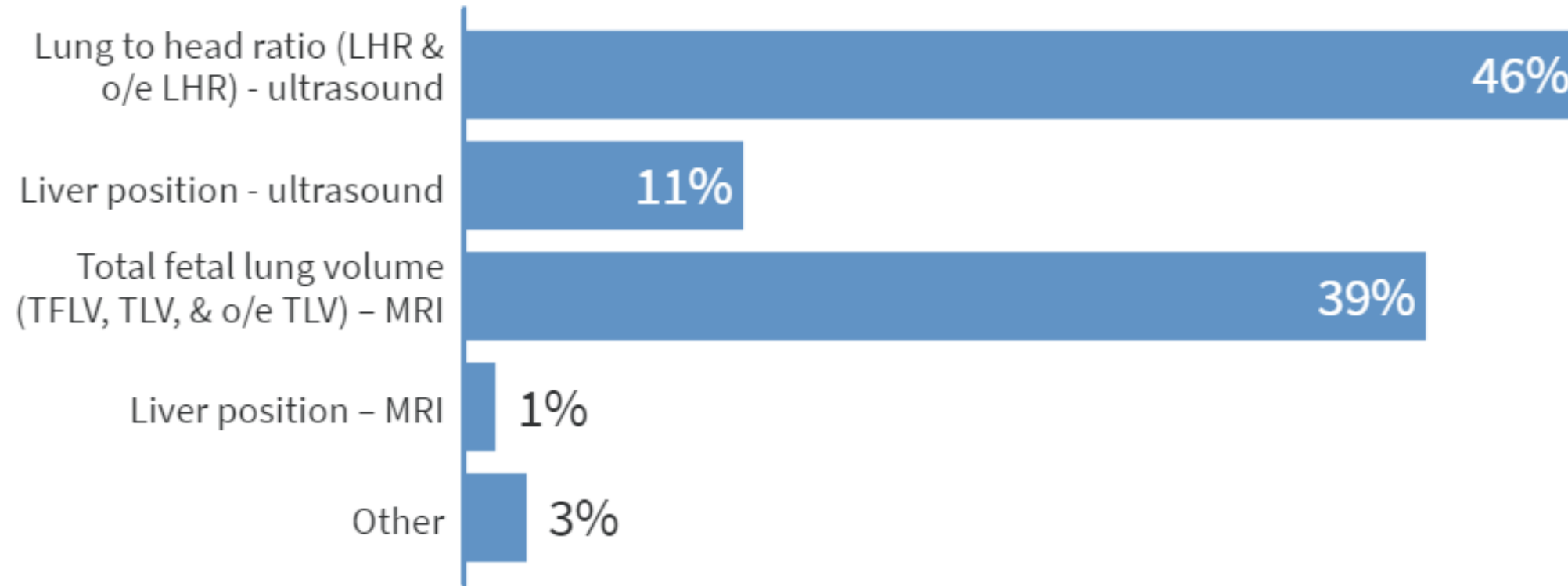
Fetal

Estimate the rate of prenatal diagnosis at your institution.



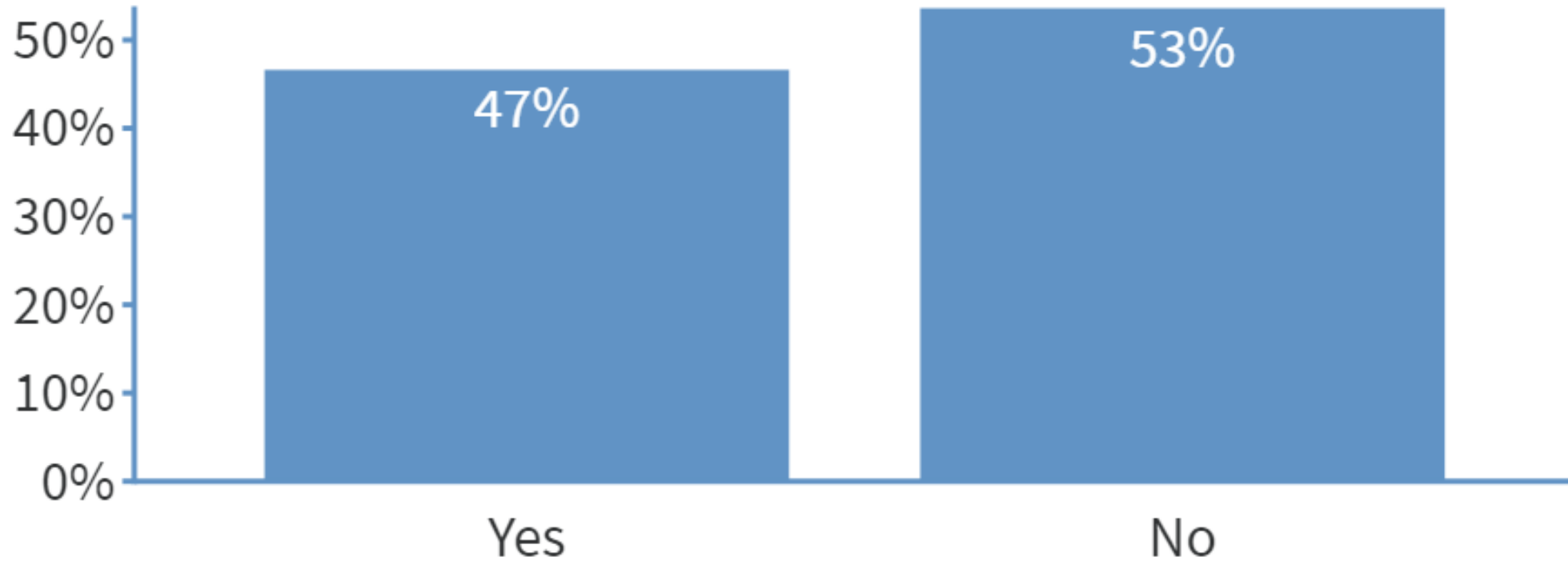
Fetal

What CDH-specific prenatal prognostic evaluation is most important to you when discussing severity of disease with the family?



Fetal

Do you offer prenatal surgical intervention at your institution?

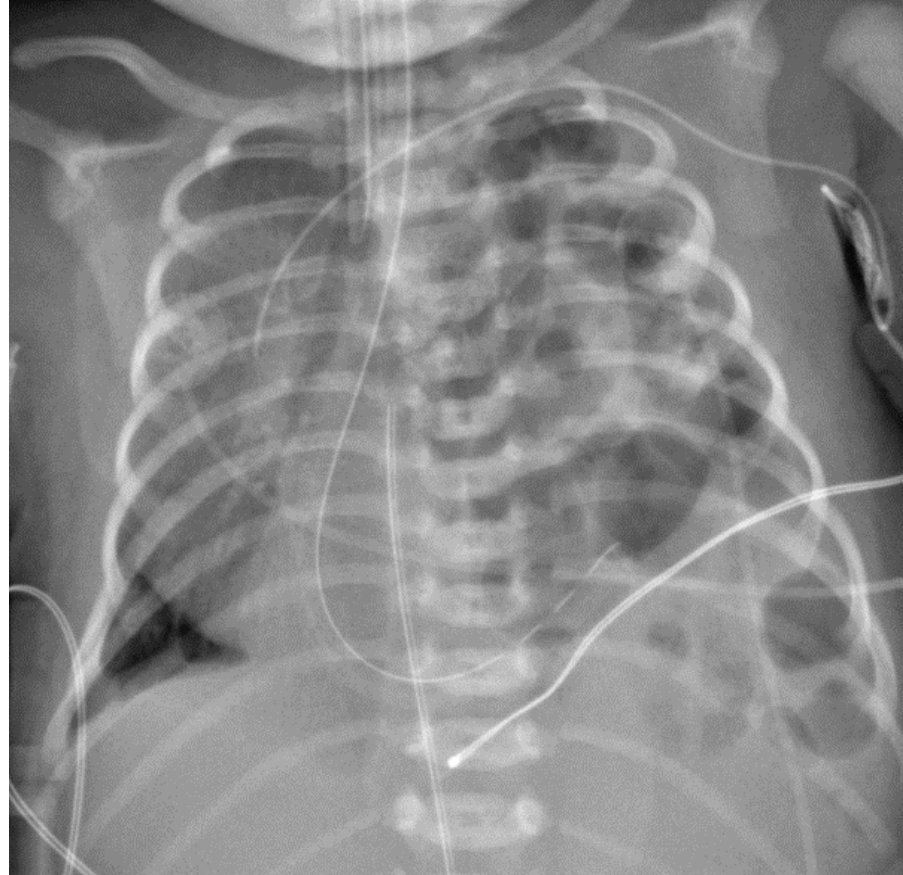


Fetal

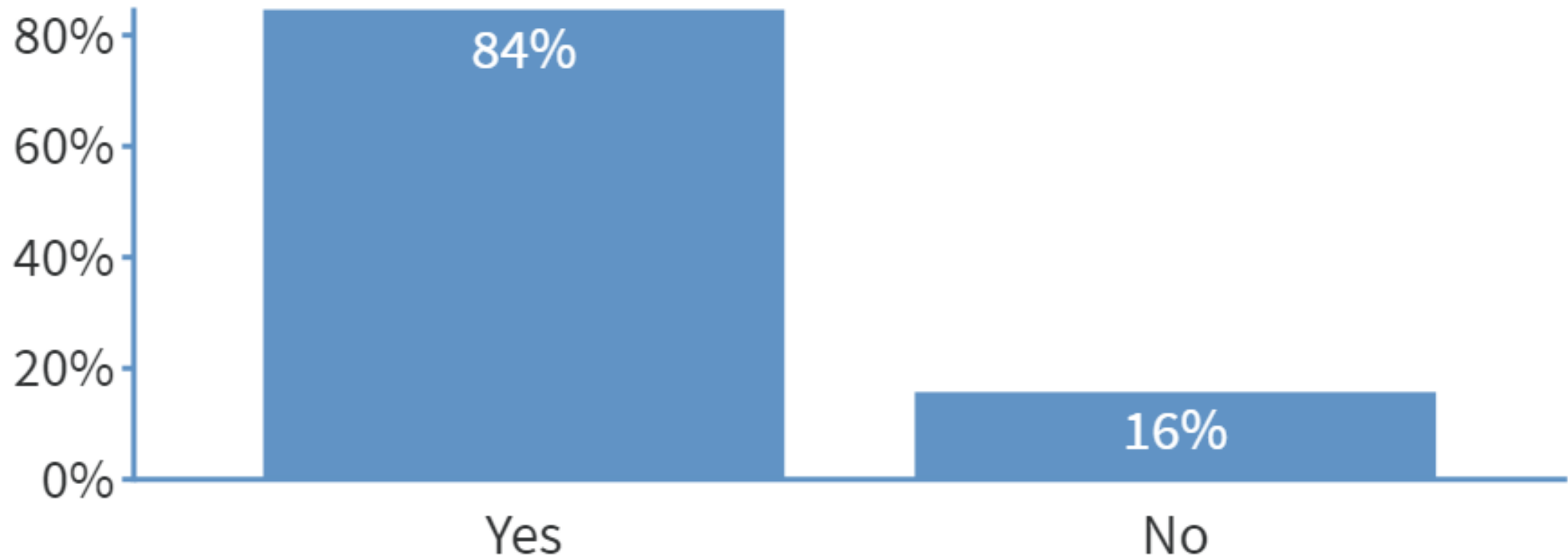
Final thoughts...

CDH case presentation

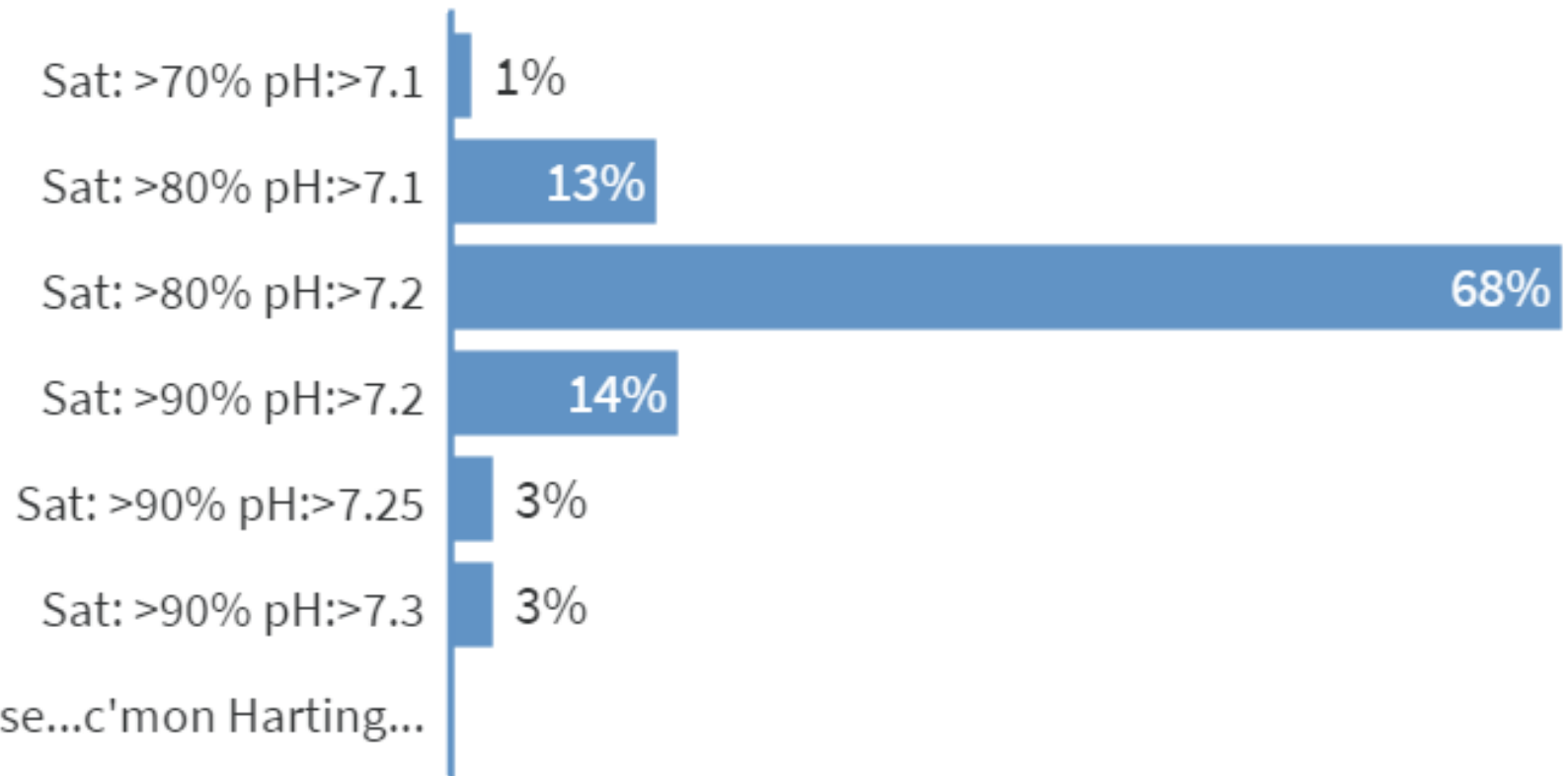
- You are asked to see a newborn with the following chest radiograph



Are CDH patients delivered and managed in the same building at your hospital?

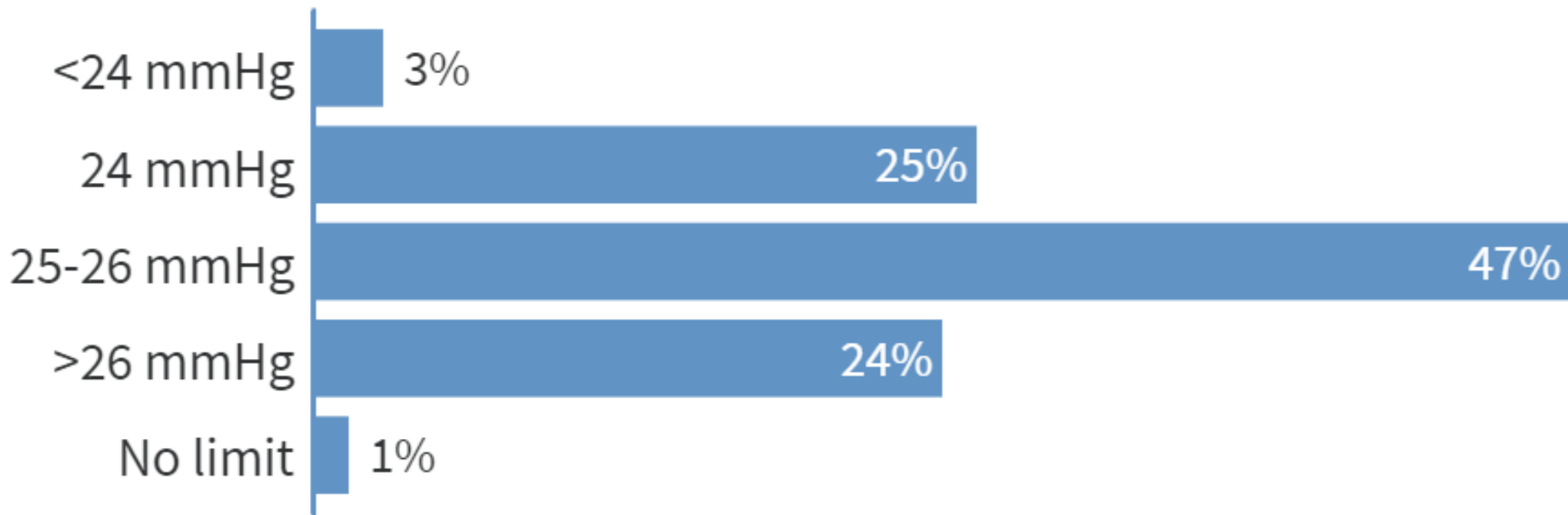


By 3-4 hours of life, what are your target goals for oxygen saturation and pH?

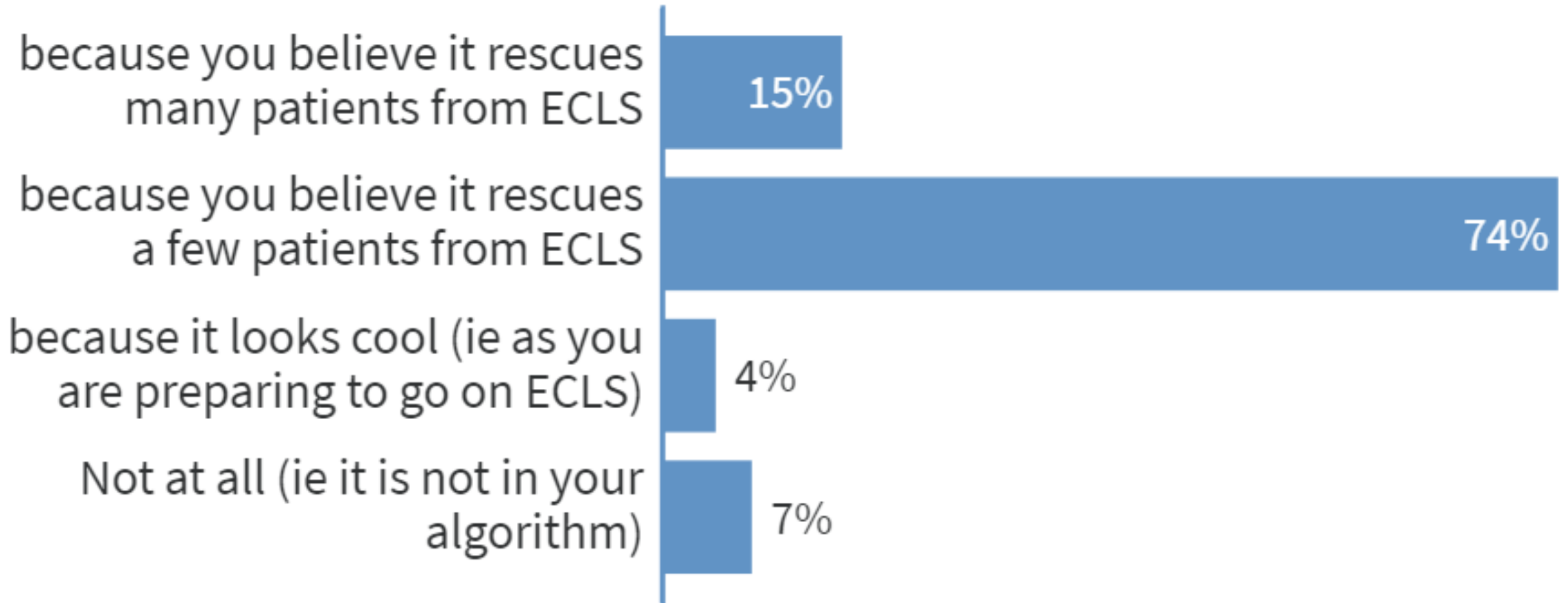


None of these is even close...c'mon Harting...

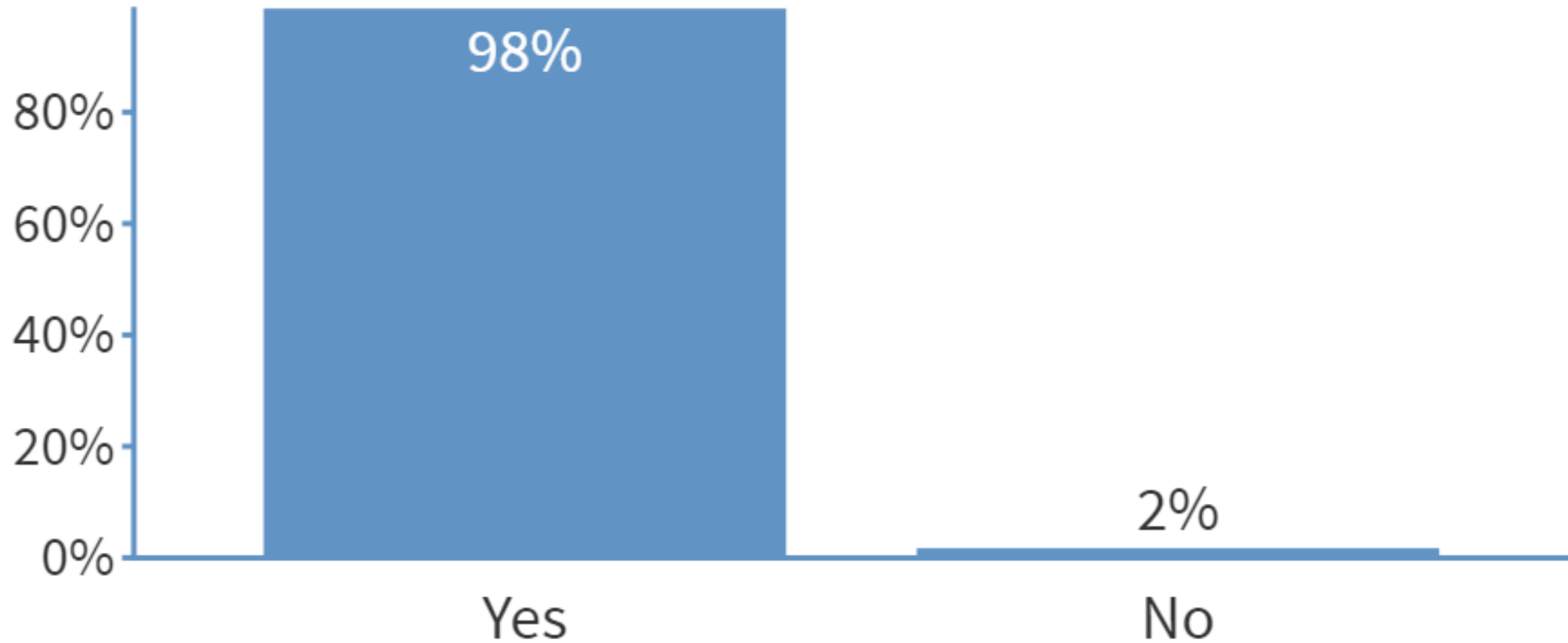
What are your maximum ventilator peak inspiratory pressures (PIP) that you would use prior to changing to HFOV, ECLS, or some other method?



At your institution, HFOV is used for CDH patients:

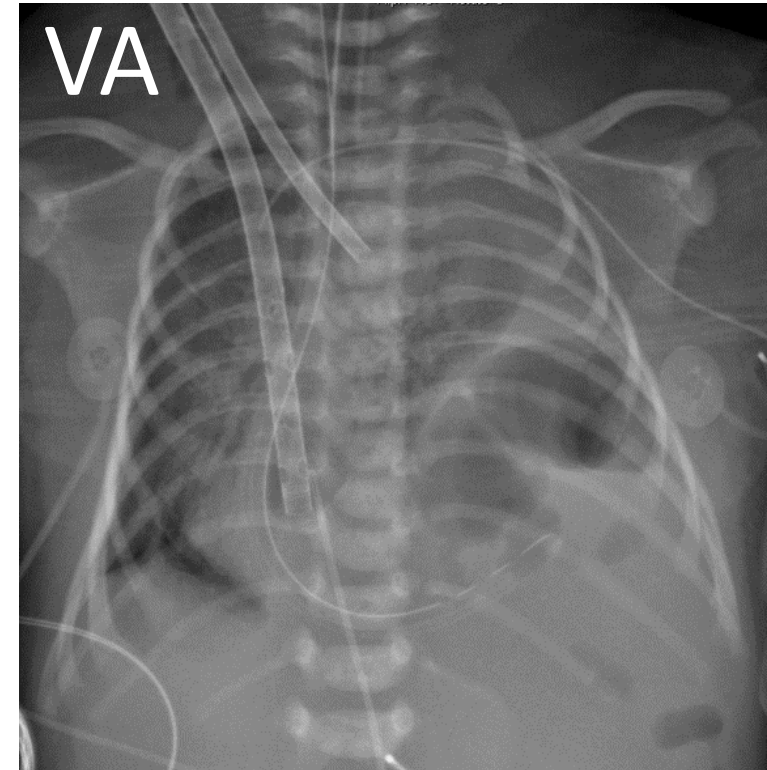
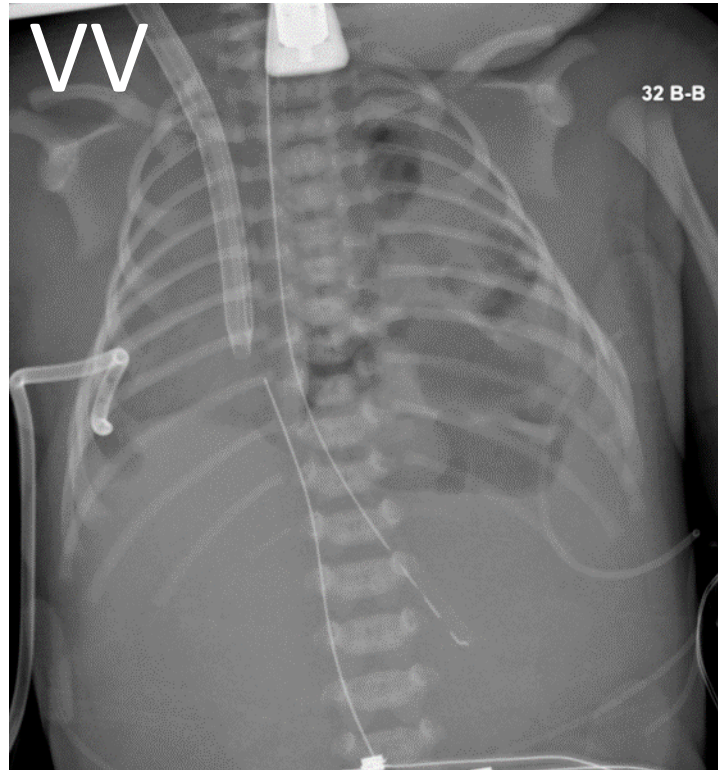


Is ECLS used to support CDH patients at your institution?

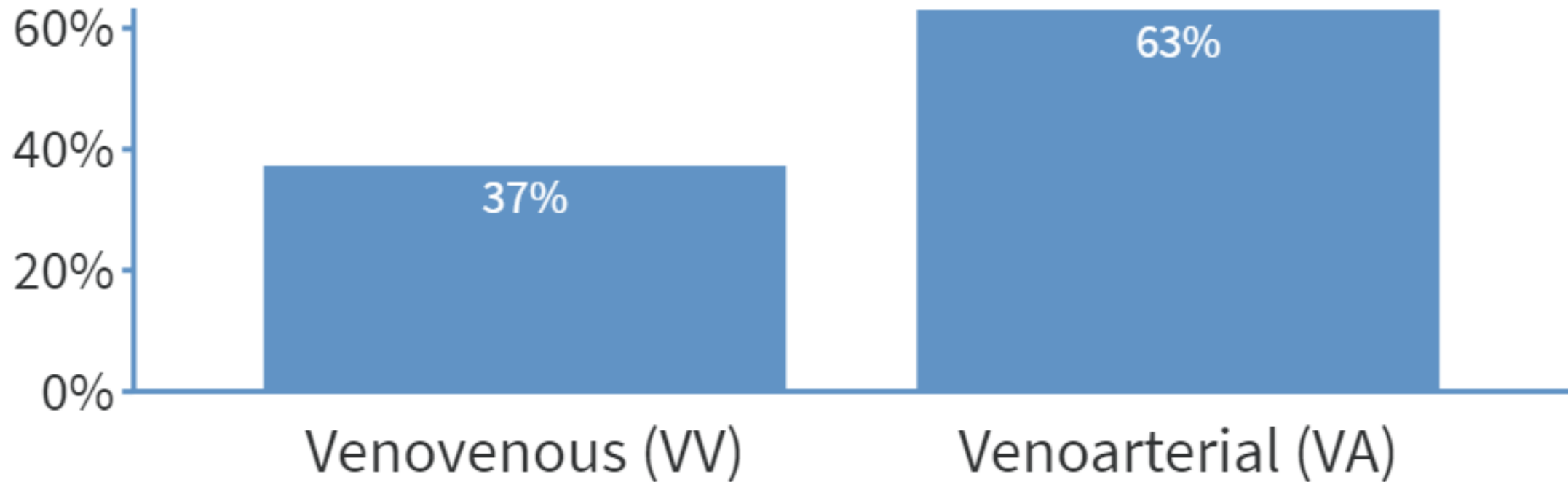


Postnatal

If you are to cannulate to ECLS secondary to not meeting goals but your hemodynamics are stable – what mode would you try first?



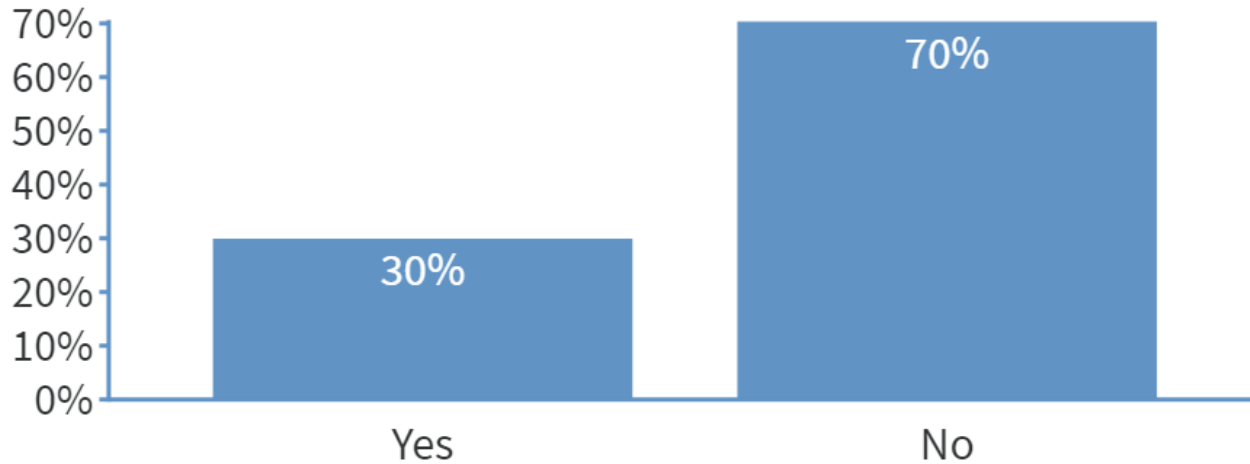
If you are to cannulate to ECLS secondary to not meeting goals but your hemodynamics are stable – what mode would you try first?



Postnatal

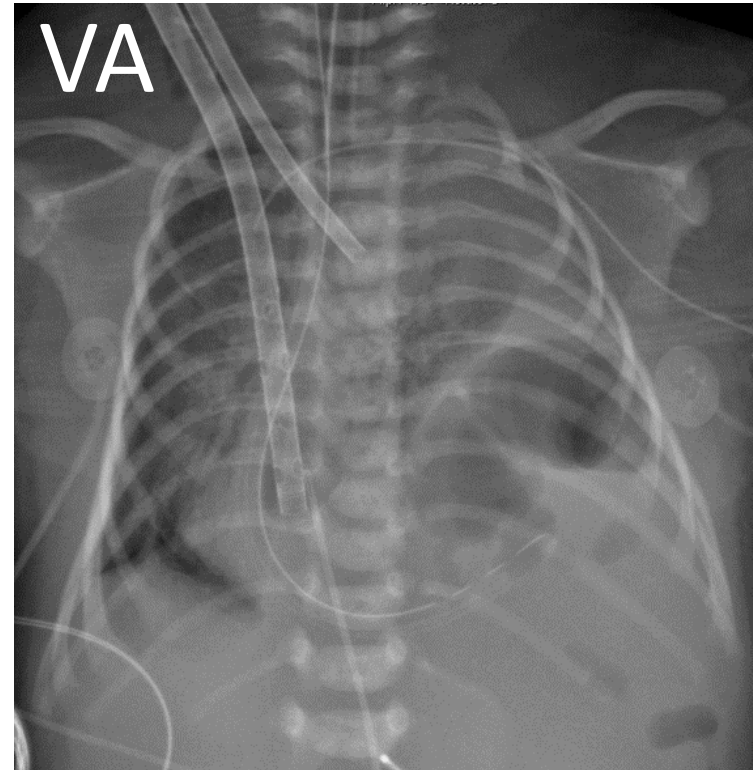
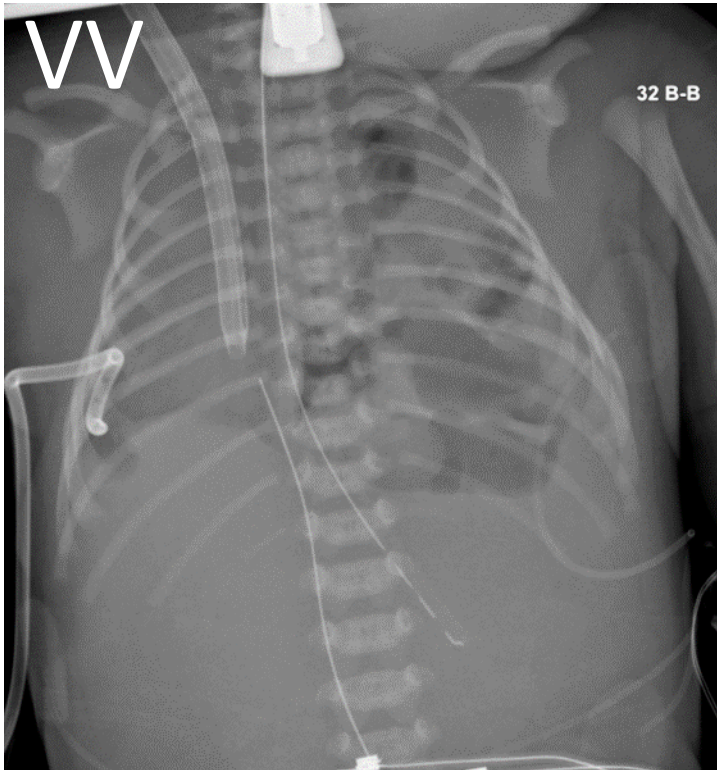
If you are to cannulate to ECLS – do you use the 13Fr Avalon?

If you are to cannulate to ECLS – do you use / consider the 13Fr Avalon?

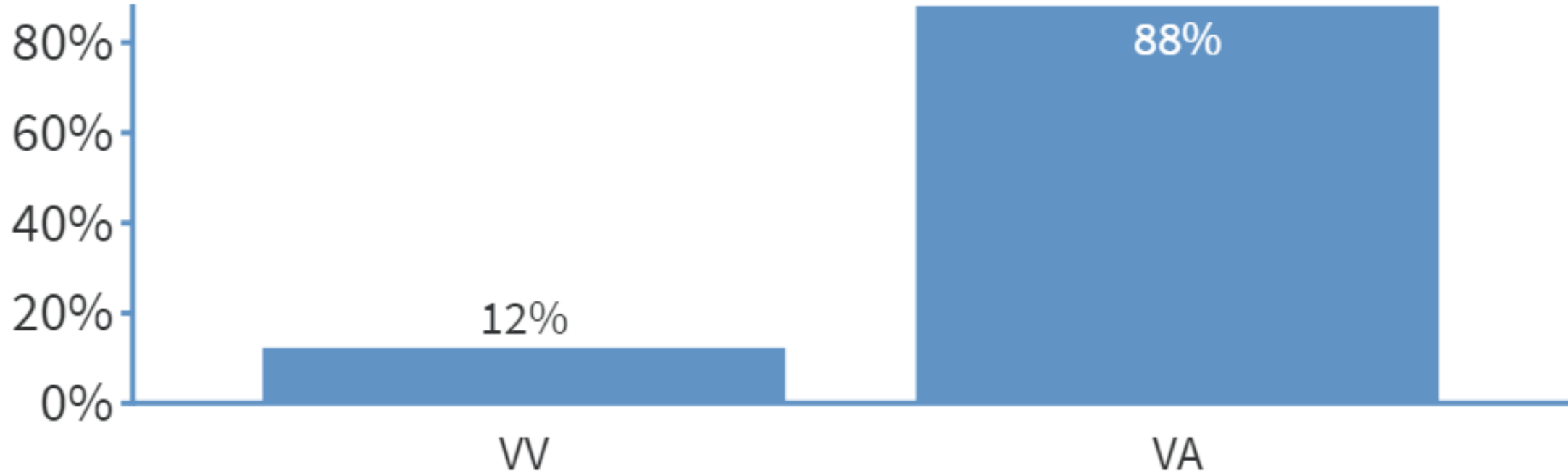


Postnatal

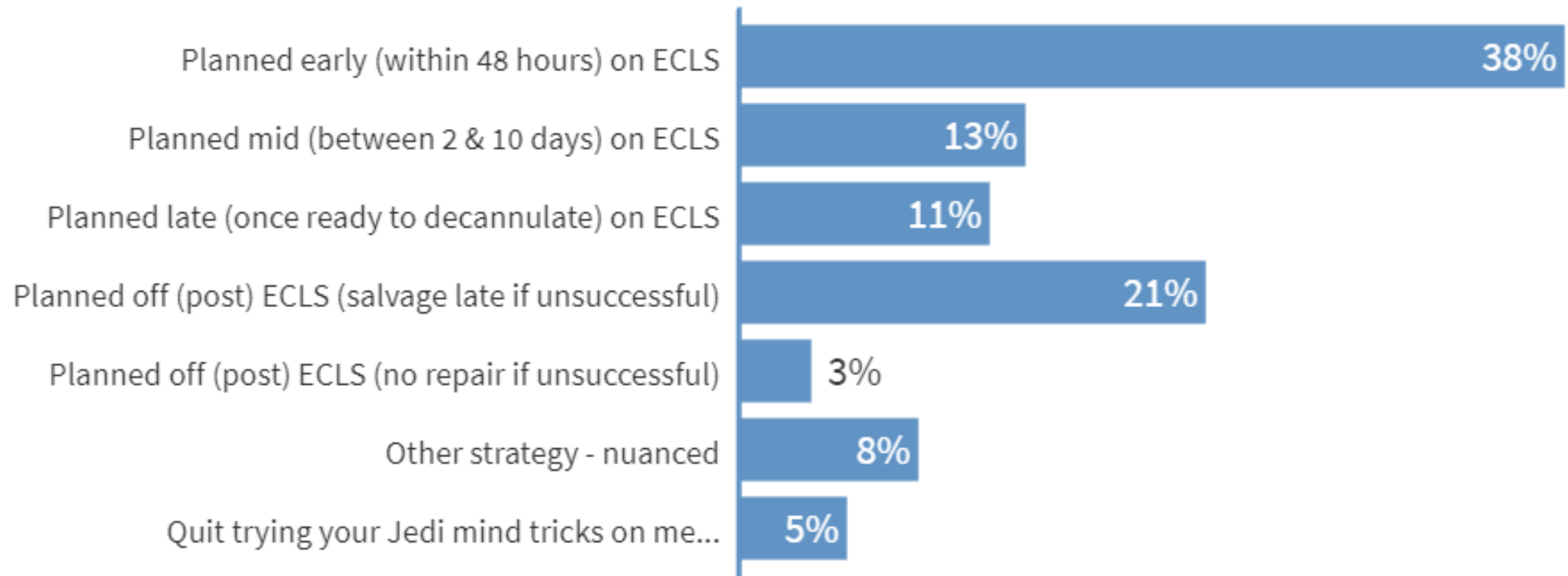
If you are to cannulate to ECLS secondary to not meeting goals and your hemodynamics are **unstable** – what mode would you try first?



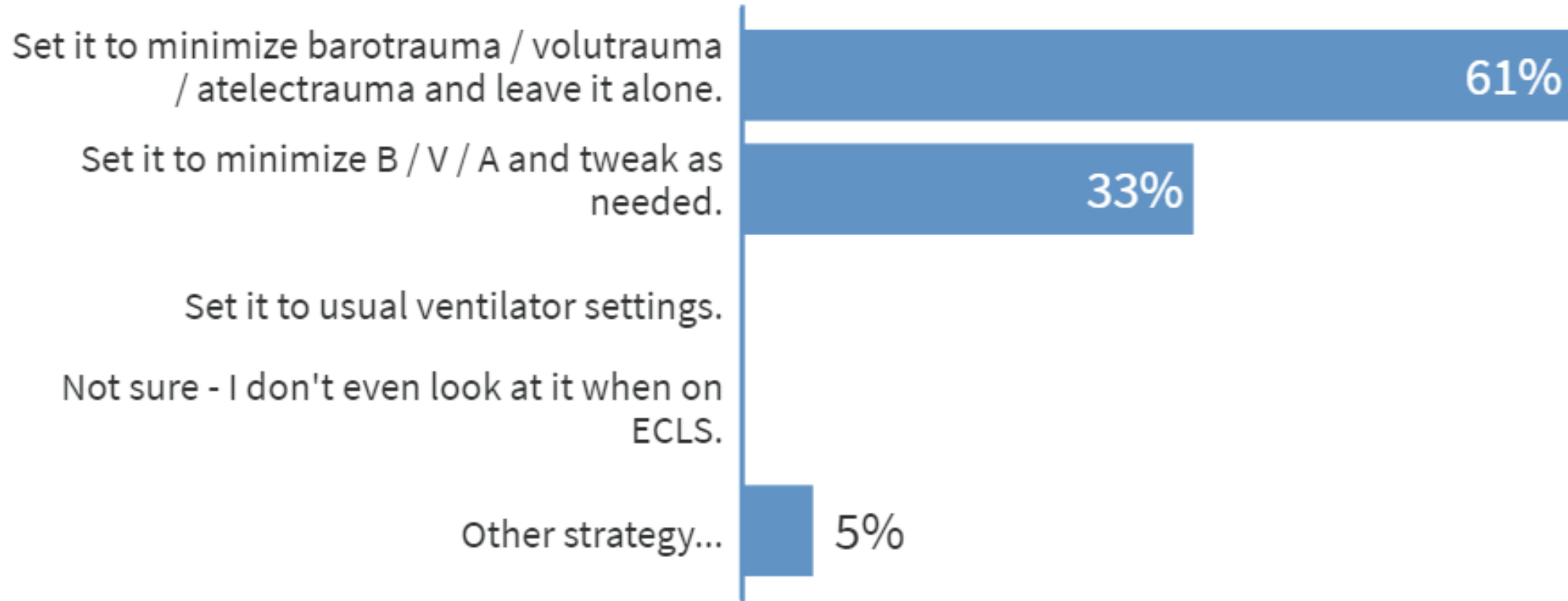
If you are to cannulate to ECLS secondary to not meeting goals and your hemodynamics are unstable – what mode would you try first?



Smooth cannulation... what is your preferred diaphragmatic repair strategy?



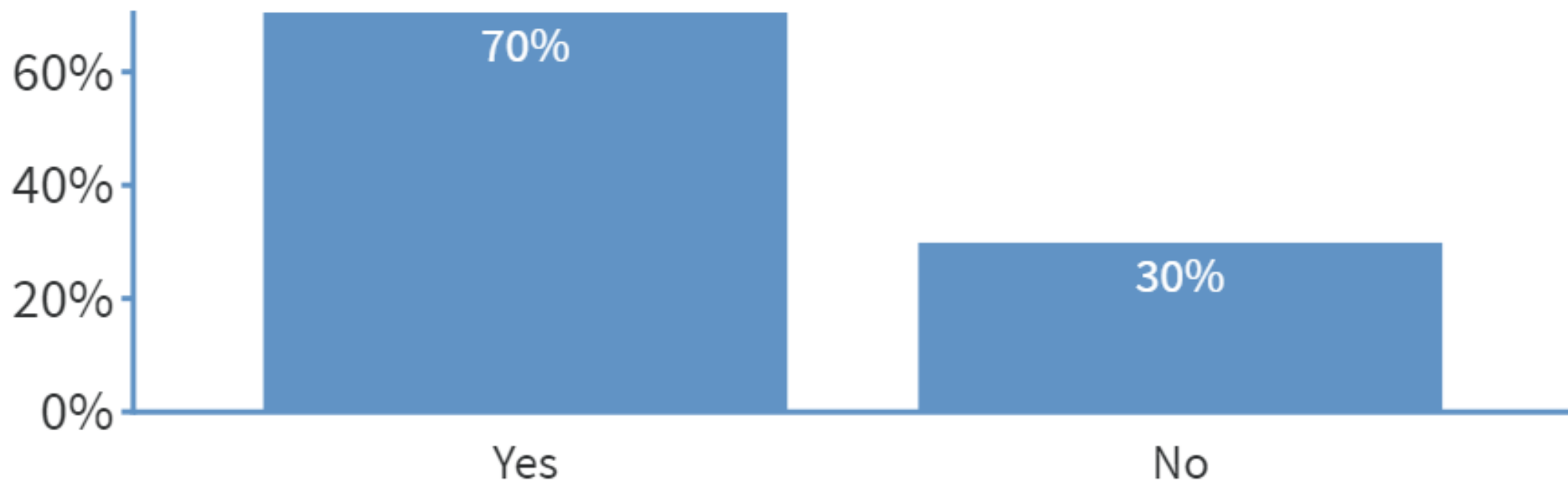
While on ECLS, what do you do with the ventilator?



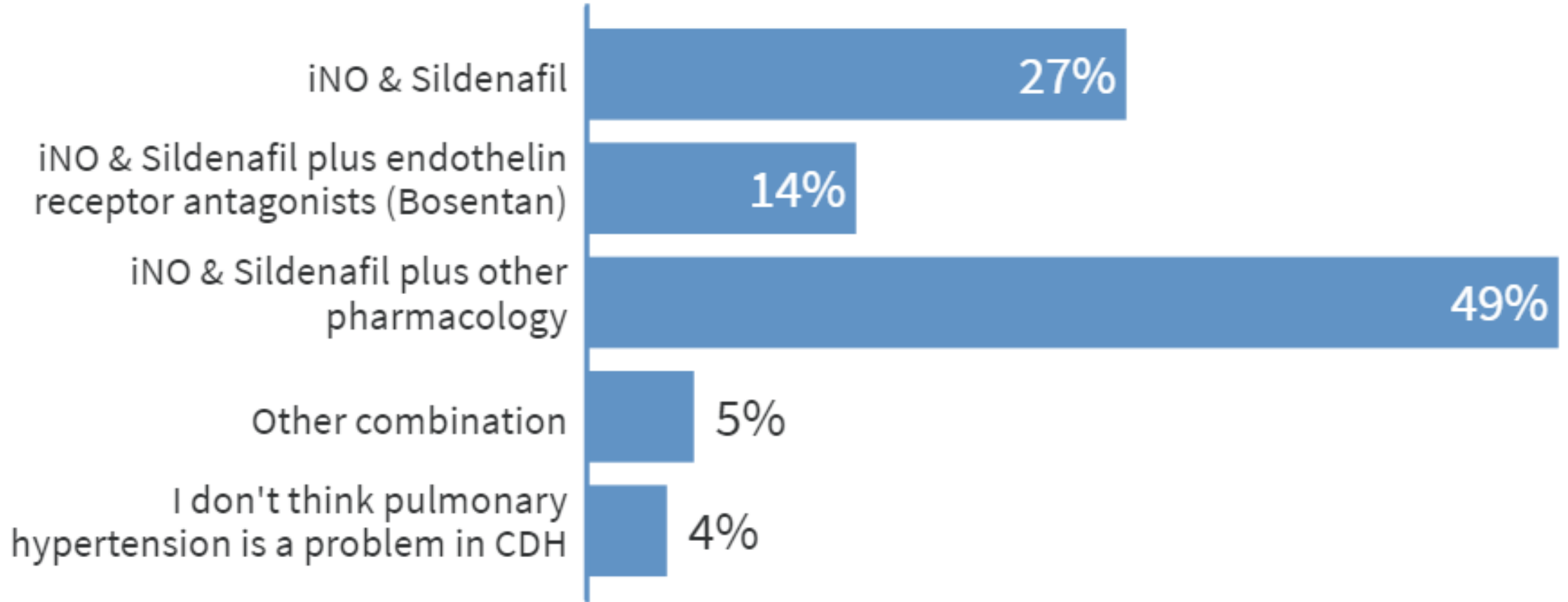
On ECLS

Weaning and liberation from ECLS is tricky...

Does pulmonary hypertension (assessed by echocardiogram) factor into your decision to proceed with repair?



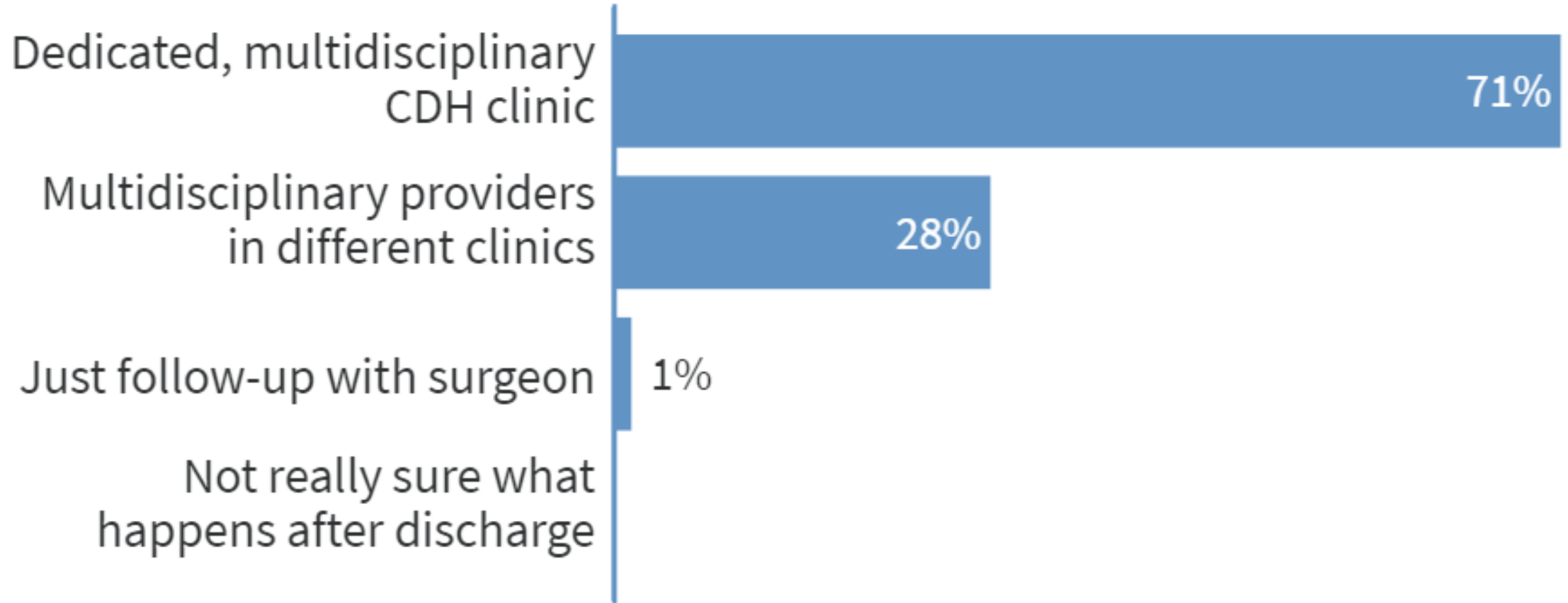
What do you prefer to try for pulmonary hypertension management?



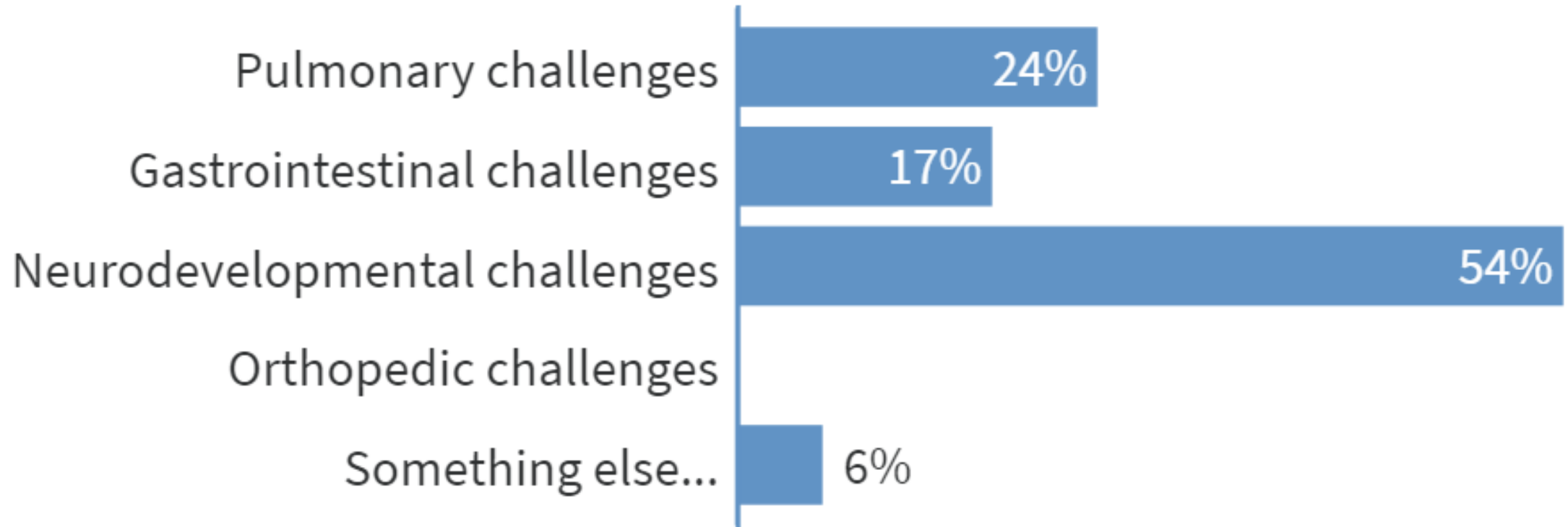
Ongoing CDH inpatient management

Thoughts on this window...

How is your post-discharge CDH care structured?



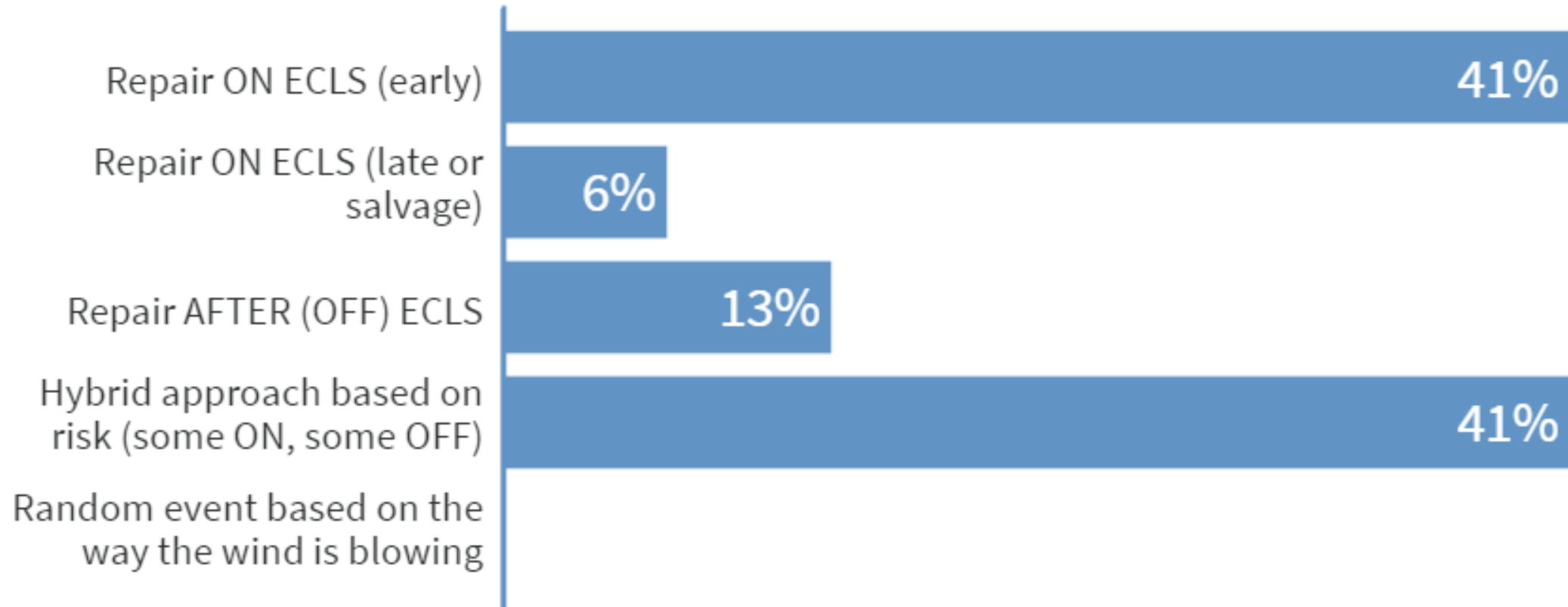
What do you see as the single greatest medical challenge facing CDH survivors?



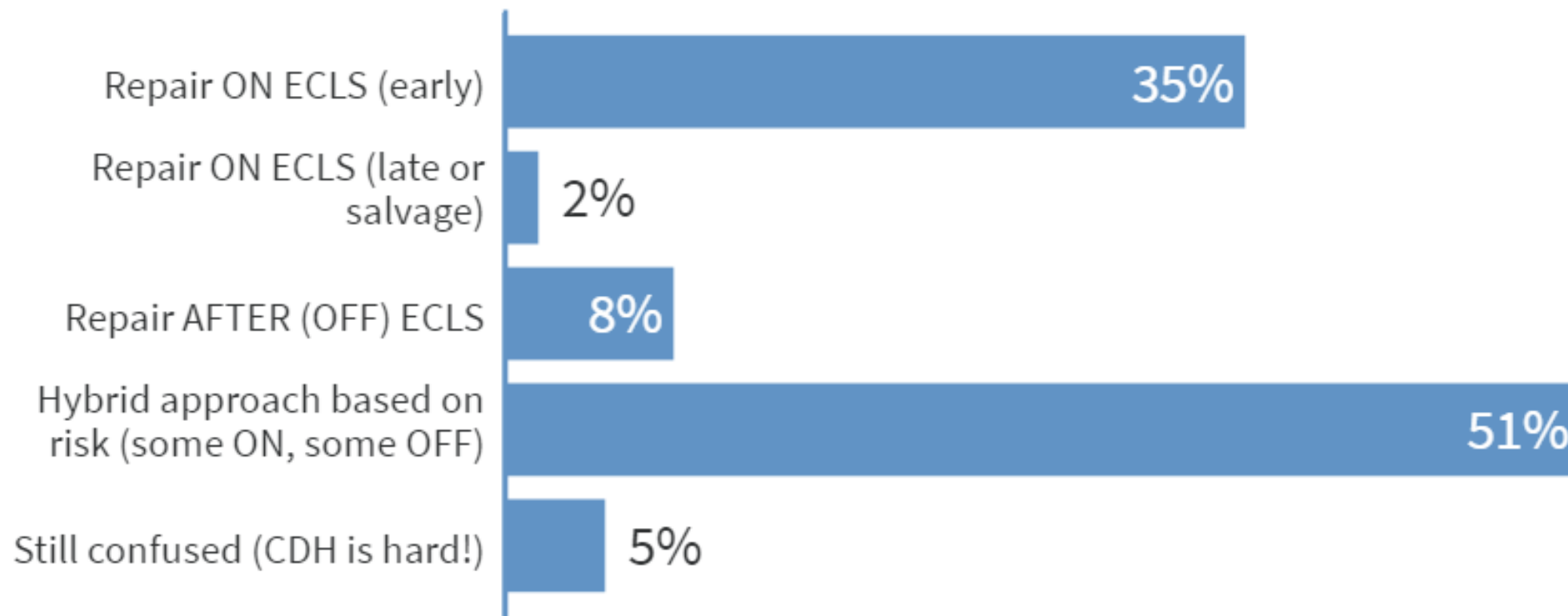
Post-discharge

Final thoughts...

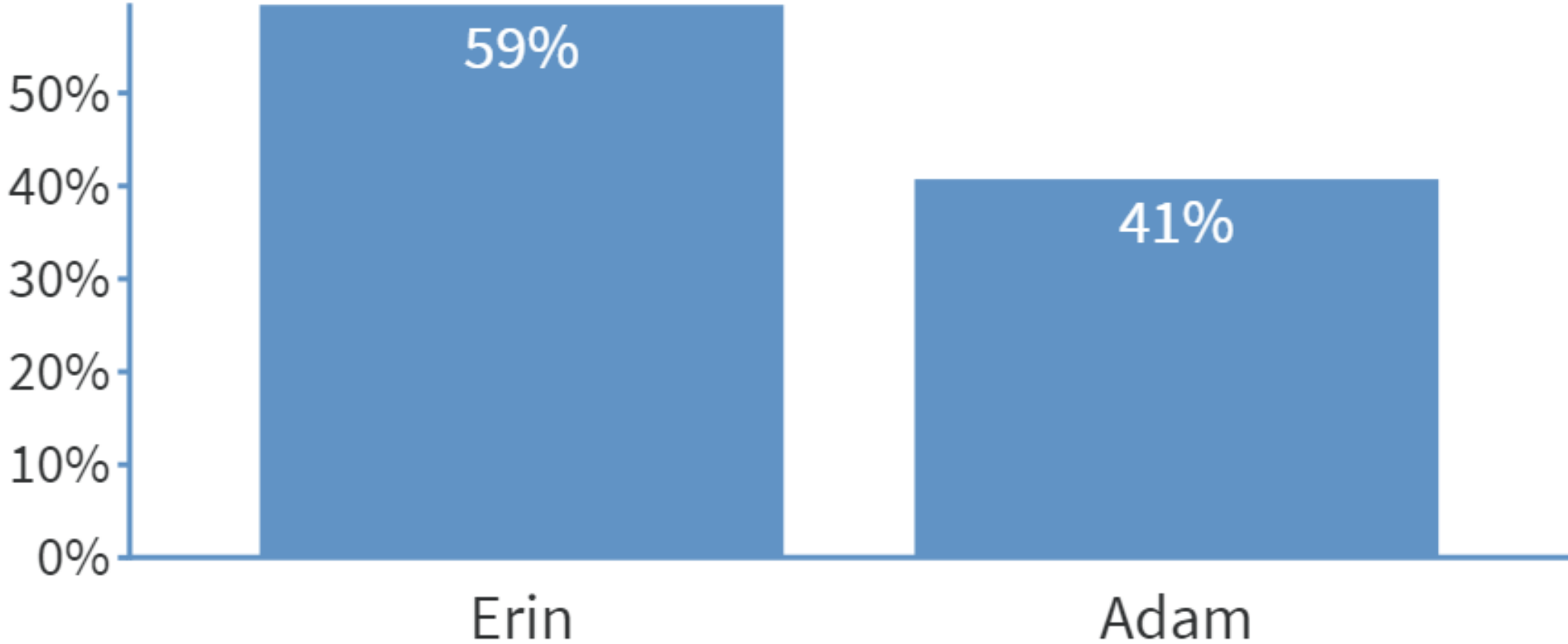
What is your current overarching institutional approach to diaphragmatic repair for CDH patients placed on ECLS?



After the debate, I feel like the best approach to diaphragmatic repair for CDH patients on ECLS is:



Who won the debate?



Please remain in *Live Oak*

