

Public Health Experts are Needed in Policy Work Groups, Task Forces, and Advisory Committees



Only 10% of a person's health is determined by clinical medical care, but **80-90%** is due to social determinants or foundations of health - such as where one lives and works. (1)

(1) Public Health Experts are Valuable

Public health experts focus on "upstream" issues - structural and systemic factors impacting health. (2)

This is a different perspective than health care practitioners

Public health researchers and experts focus on the social determinants or foundations of health, which are particularly important in predicting health outcomes for diverse populations, women, children, and Black, Indigenous, People of Color (BIPOC). (3-6)

Due to their different focus and perspective, public health experts add value to policy work, task forces, and advisory committees that aim to improve the health of the population.

(2) The Public Health Approach is Important

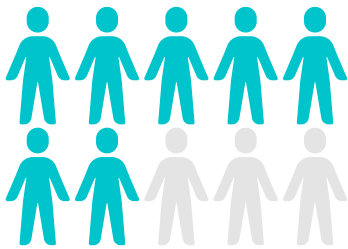
Public health takes a **proactive**, rather than reactive, approach to Americans' health. This approach will reduce the burden of chronic disease, cut costs, improve life expectancy and quality of life, and strengthen our nation's response to health emergencies. (7)

Involving public health experts in policymaking is a smart investment.

Public health professionals work with other sectors to make long-term, cost-efficient investments to support and improve community health. (8)

Involving public health experts in policymaking can help gain support among voters for new health policies.

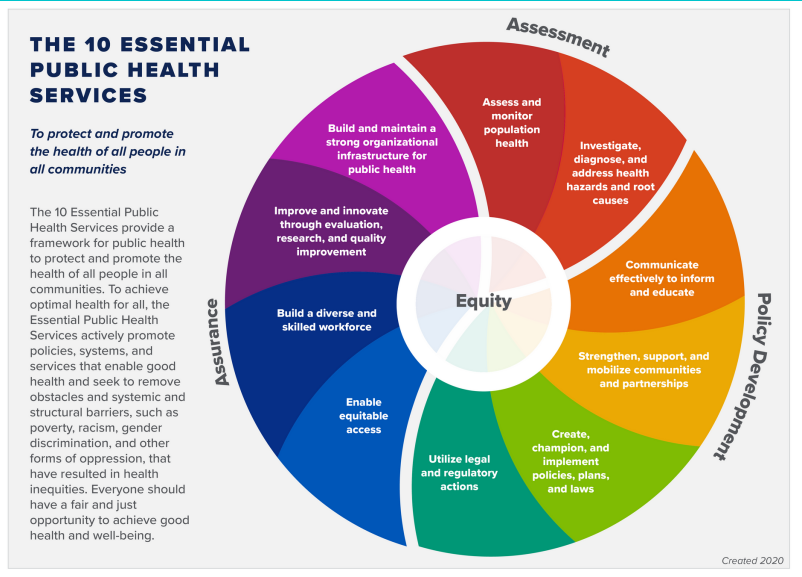
One study showed voter support was greater for COVID-19-related health policies advocated by public health experts compared to government officials. (9)



Voters support public health work

Seven in 10 voters indicate public health departments are important to create a healthy community. (8)

(3) Public Health Essential Services



Public health experts are uniquely situated to provide timely recommendations based on the essential components of public health service: (10)

- Assessment: Investigating, diagnosing, and addressing health hazards and root causes
- Policy development: Strengthening, supporting, and mobilizing communities and partnerships
- Assurance: Enabling equitable access

References:

- (1) Williams, M. (2021). Public health is being undermined. These 10 actions can restore it. STAT News. Retrieved from <https://www.statnews.com/2021/02/05/public-health-undermined-10-actions-restore-it/>
- (2) Knight, E. K. (2014). Shifting public health practice to advance health equity: Recommendations from experts and community leaders. *Journal of Public Health Management and Practice*, 20(2), 188- 196.
- (3) Zephyrin, L., Suennen, L., Viswanathan, P., Augenstein, J., & Bachrach, D. (2020). Part 1: A Framework for Addressing Gaps and Barriers. The Commonwealth Fund.
- (4) Office of Disease Prevention and Health Promotion, Healthy People (2020). Early Childhood Development and Education. Retrieved from <https://www.healthypeople.gov/2020/topics-objectives/topic/social-determinants-health/interventions-resources/early-childhood-development-and-education>
- (5) Palmer, R. C., Ismond, D., Rodriquez, E. J., & Kaufman, J. S. (2019). Social determinants of health: future directions for health disparities research. *American Journal of Public Health*, 109, S70_S71.
- (6) Penman-Aguilar, A., Talih, M., Huang, D., Moonesinghe, R., Bouye, K., & Beckles, G. (2016). Measurement of health disparities, health inequities, and social determinants of health to support the advancement of health equity. *Journal of public health management and practice: JPHMP*, 22(Suppl 1), S33.
- (7) Trust for America's Health. (2021). The Impact of Chronic Underfunding on America's Public Health System: Trends, Risks, and Recommendations, 2021. Retrieved from https://www.tfah.org/wp-content/uploads/2021/05/2021_PHFunding_Fnl.pdf.
- (8) De Beaumont Foundation. (2020). National Poll: More Voters Recognize Value of Local Health Departments. Retrieved from <https://debeaumont.org/news/2020/poll-more-voters-recognize-value-of-local-health-departments/>
- (9) Bhanot, S., & Hopkins, D. J. (2020). Partisan Polarization and Resistance to Elite Messages: Results from a Survey Experiment on Social Distancing. *Journal of Behavioral Public Administration*. Available at SSRN 3593450.
- (10) Castrucci, B. (2020). Refreshing Public Health Practice: The Revised 10 Essential Services of Public Health presentation. de Beaumont Foundation. Retrieved from <https://sph.uth.edu/research/centers/dell/webinars/webinar.htm?id=70d4dcfc-bc47-4370-96f5-44250411576c>